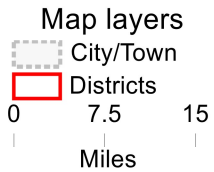
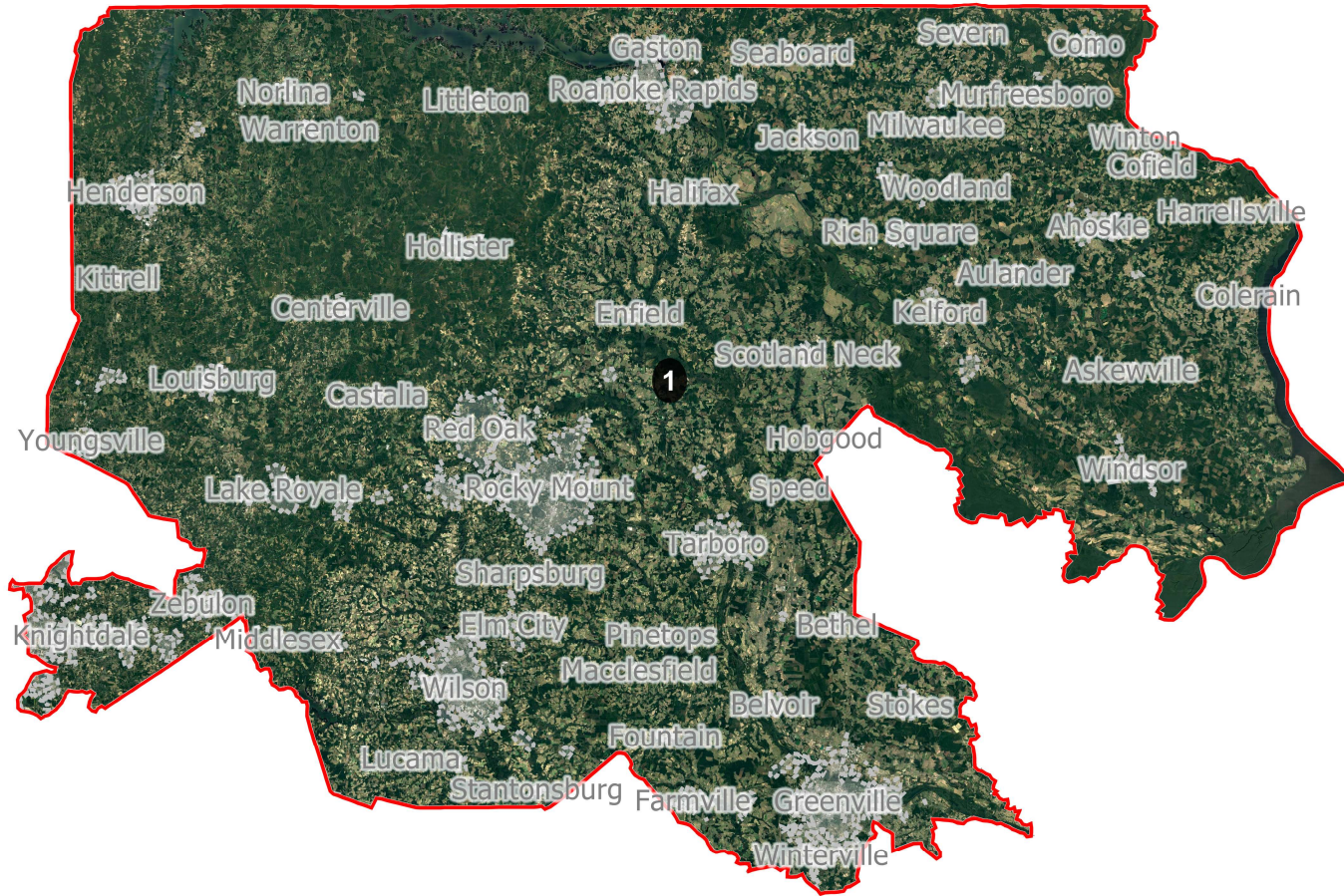
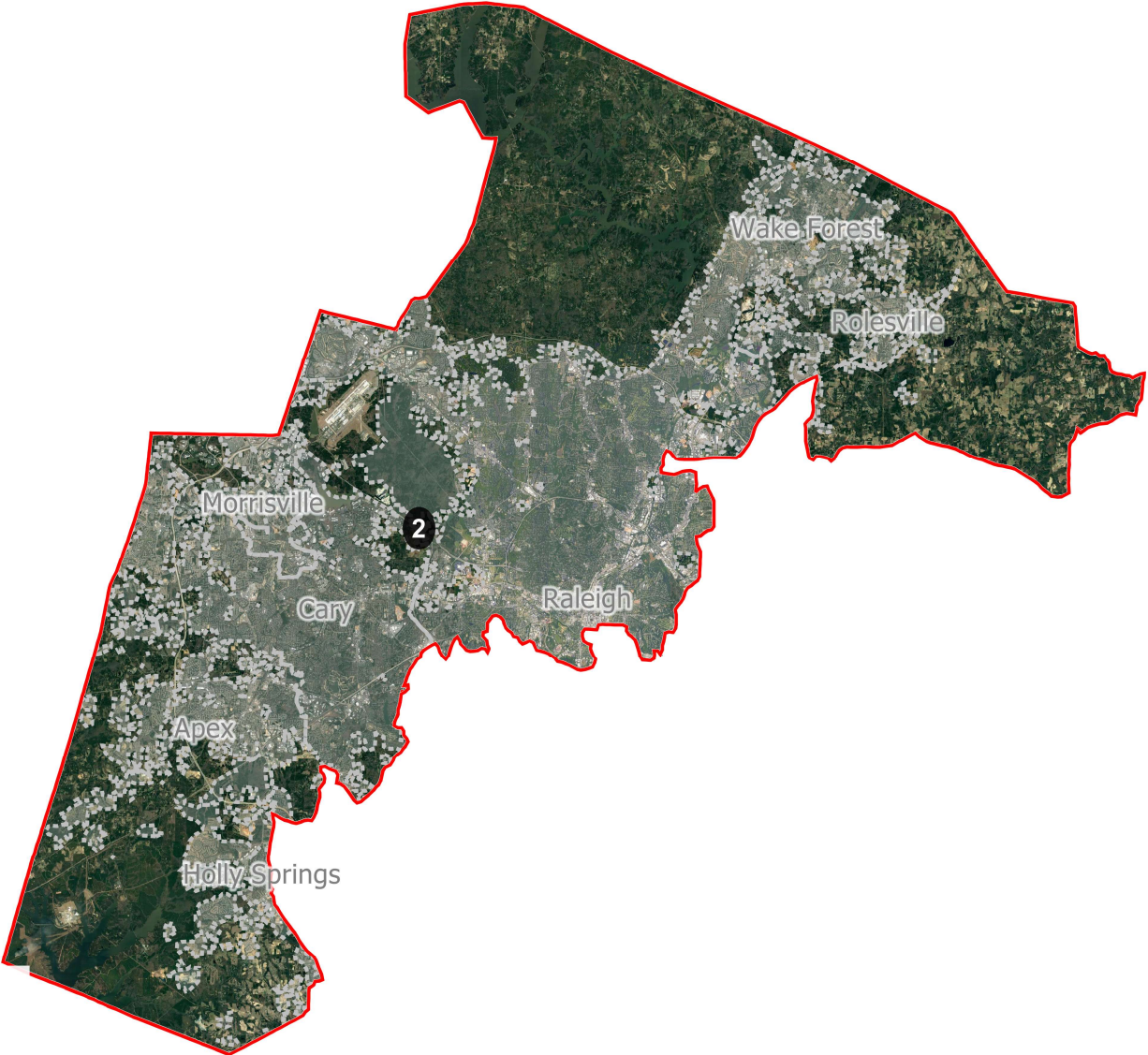


# District: 1

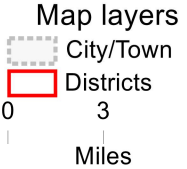
Field	Value
District	1
Population	745671
Deviation	0
% D 20_Pres	57.8%
% R 20_Pres	42.2%
% NH White CVAP 19	50.64%
% NH Black CVAP 19	43.26%
% NH Asian CVAP 19	1.16%
% H CVAP 19	3.38%



# District: 2

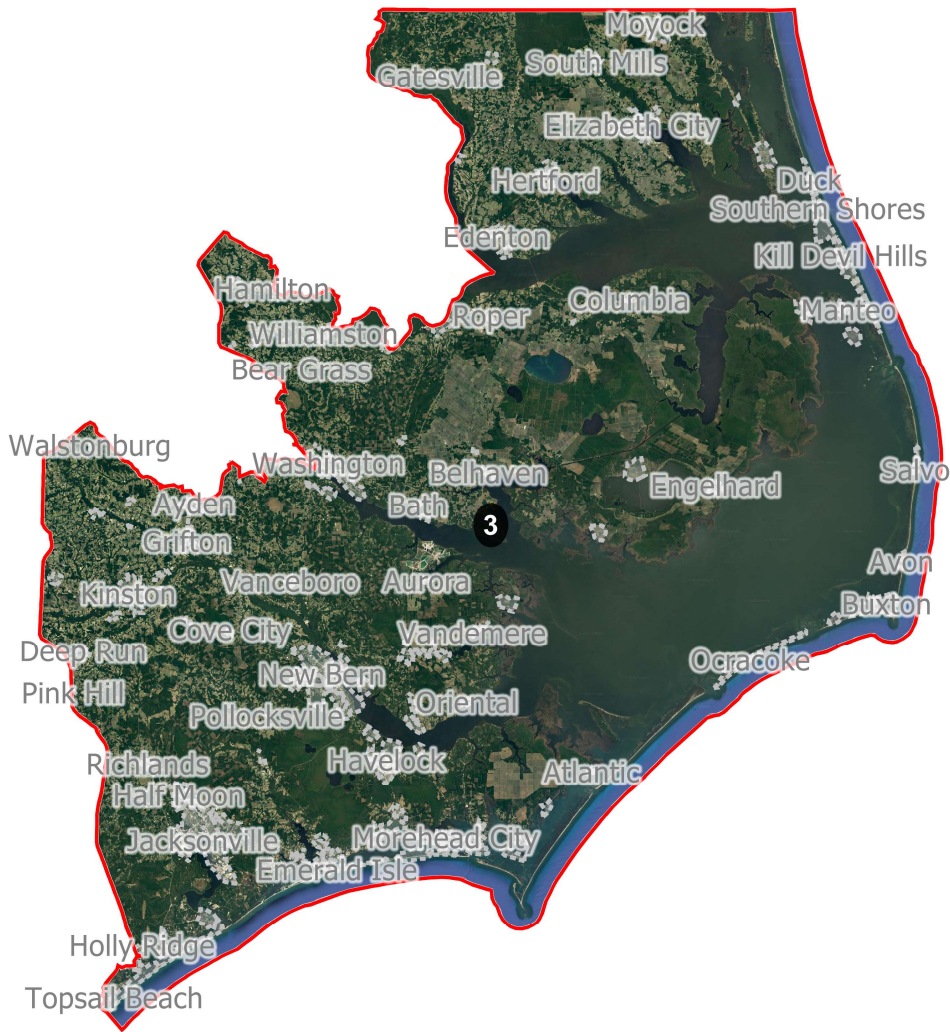


Field	Value
District	2
Population	745670
Deviation	-1
% D 20_Pres	63.8%
% R 20_Pres	36.2%
% NH White CVAP 19	73.1%
% NH Black CVAP 19	15.56%
% NH Asian CVAP 19	6.12%
% H CVAP 19	4.29%

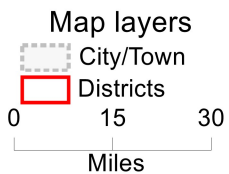


# District: 3

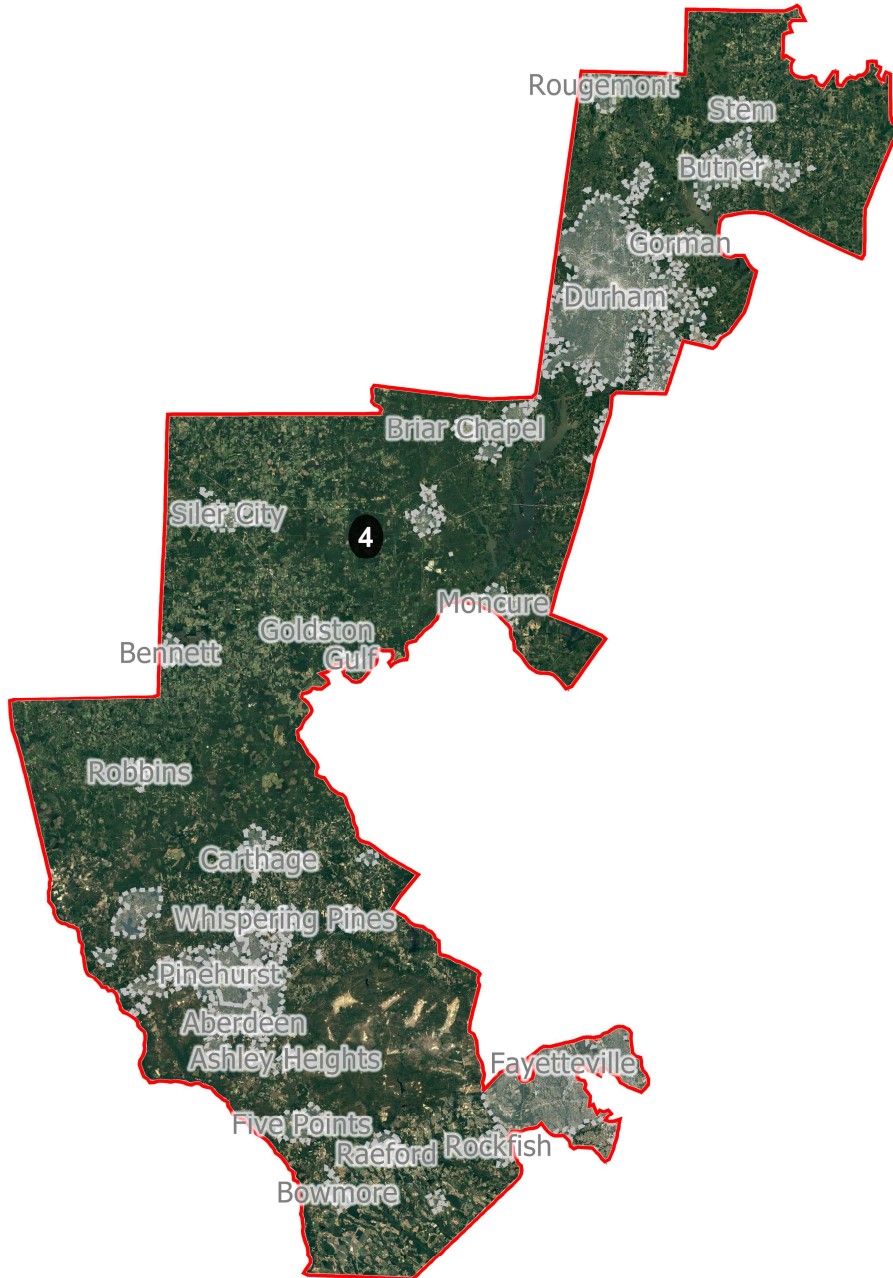
Field	Value
District	3
Population	745670
Deviation	-1
% D 20_Pres	38.31%
% R 20_Pres	61.69%
% NH White CVAP 19	70.88%
% NH Black CVAP 19	21.38%
% NH Asian CVAP 19	1.26%
% H CVAP 19	5%



©2021 CALIPER

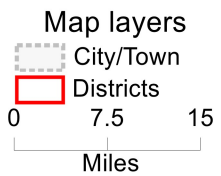


# District: 4

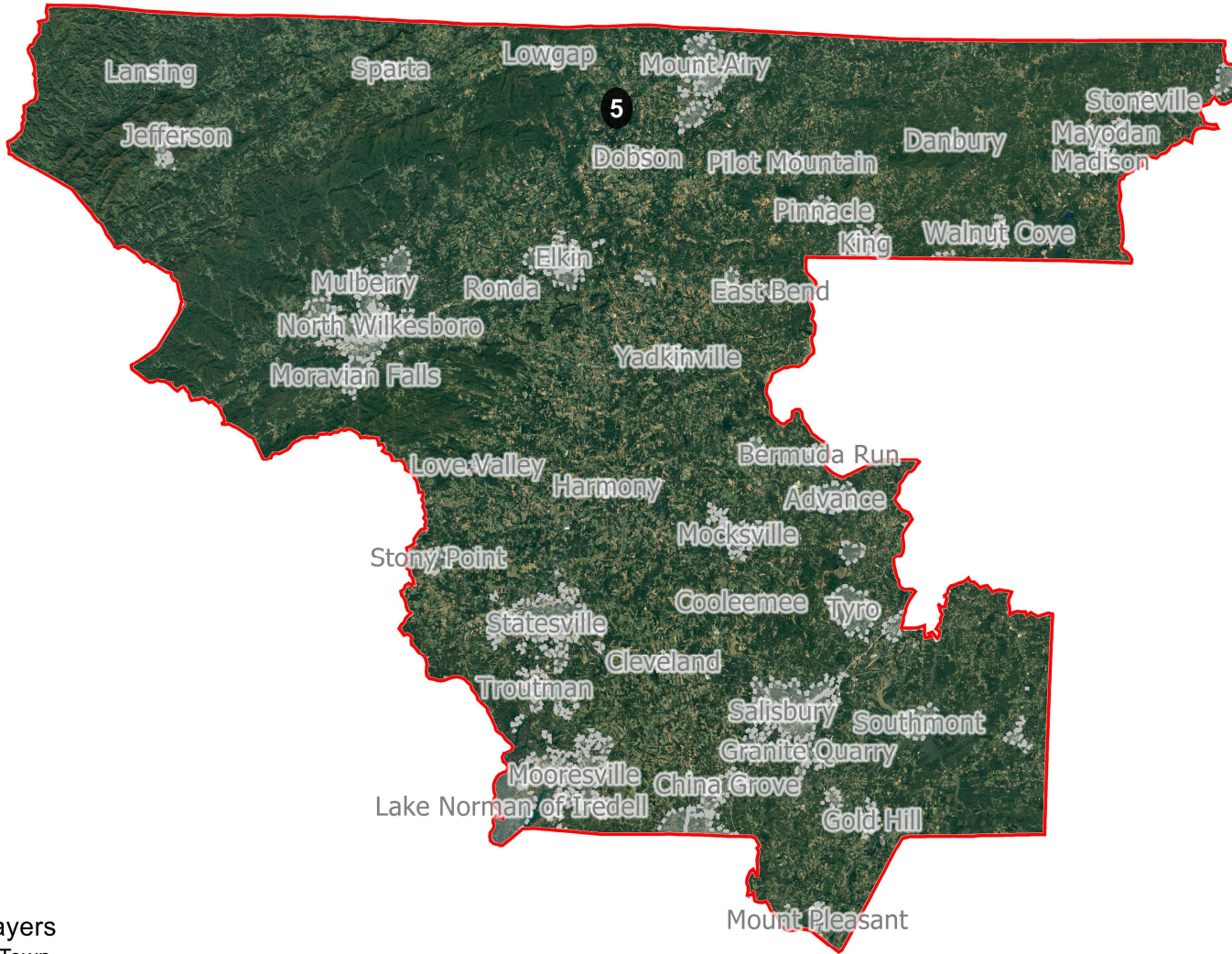


Field	Value
District	4
Population	745670
Deviation	-1
% D 20_Pres	66.52%
% R 20_Pres	33.48%
% NH White CVAP 19	55.14%
% NH Black CVAP 19	34.32%
% NH Asian CVAP 19	2.78%
% H CVAP 19	5.51%

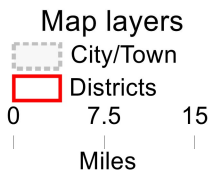
©2021 CALIPER



# District: 5

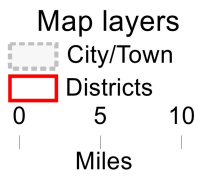
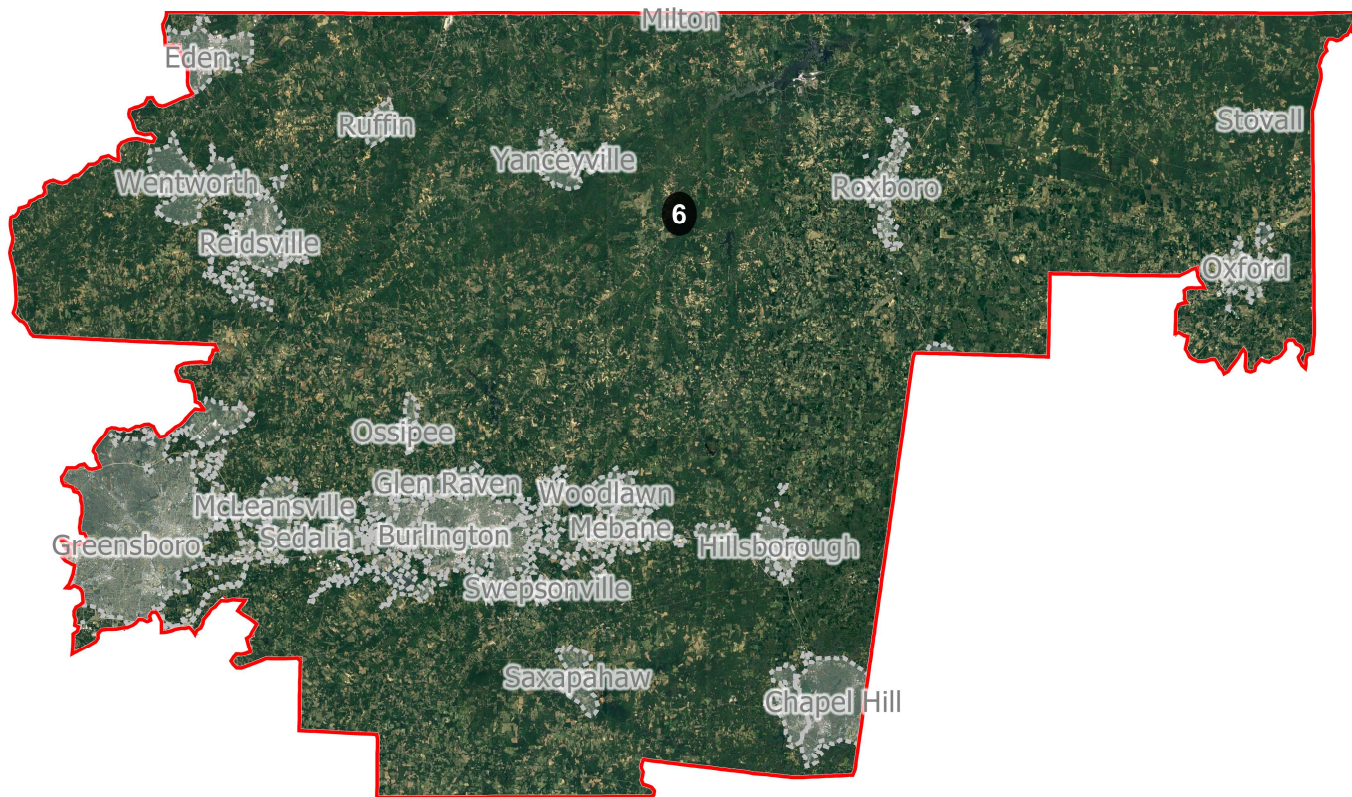


Field	Value
District	5
Population	745670
Deviation	-1
% D 20_Pres	27.14%
% R 20_Pres	72.86%
% NH White CVAP 19	86.78%
% NH Black CVAP 19	8.52%
% NH Asian CVAP 19	0.77%
% H CVAP 19	2.98%

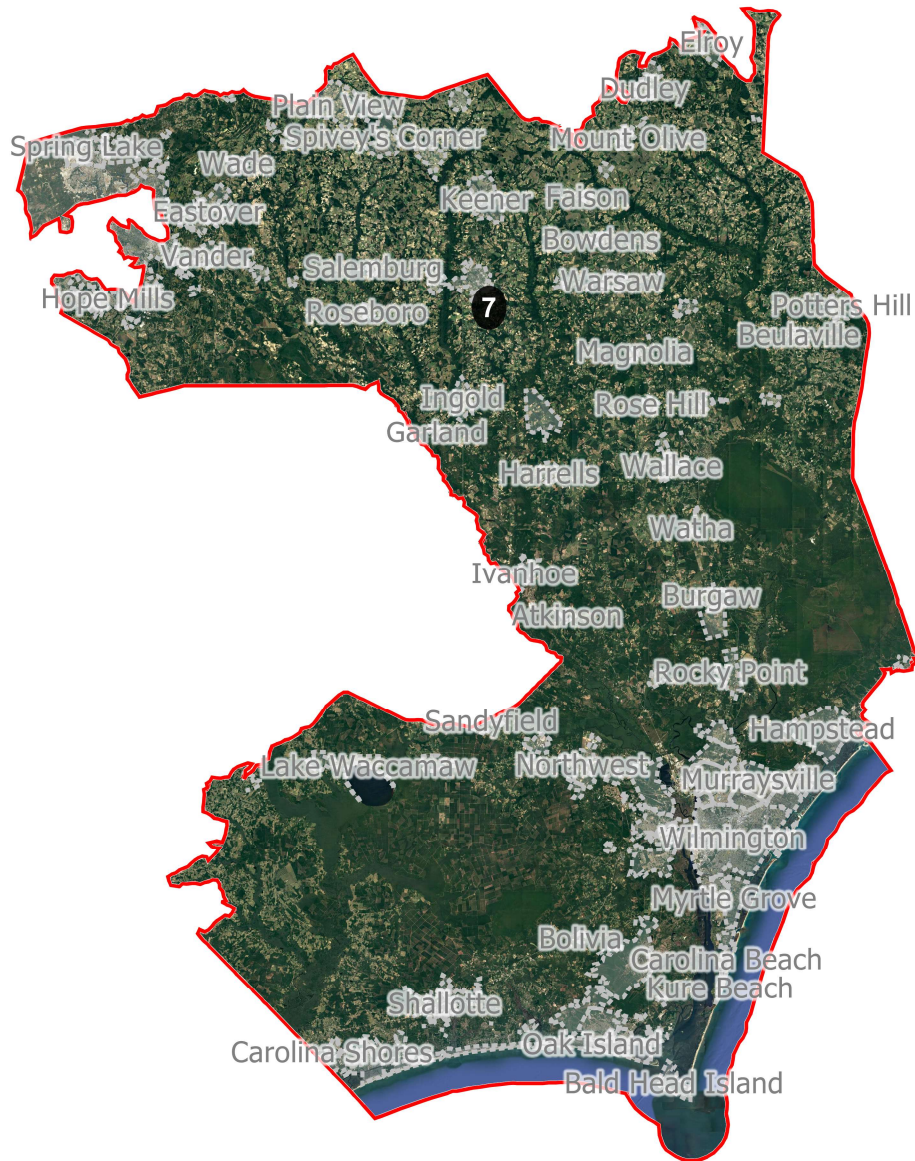


# District: 6

Field	Value
District	6
Population	745672
Deviation	1
% D 20_Pres	60.12%
% R 20_Pres	39.88%
% NH White CVAP 19	63.67%
% NH Black CVAP 19	29.19%
% NH Asian CVAP 19	2.52%
% H CVAP 19	3.43%

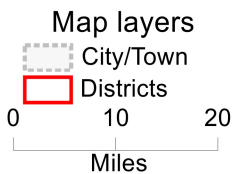


# District: 7



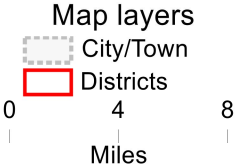
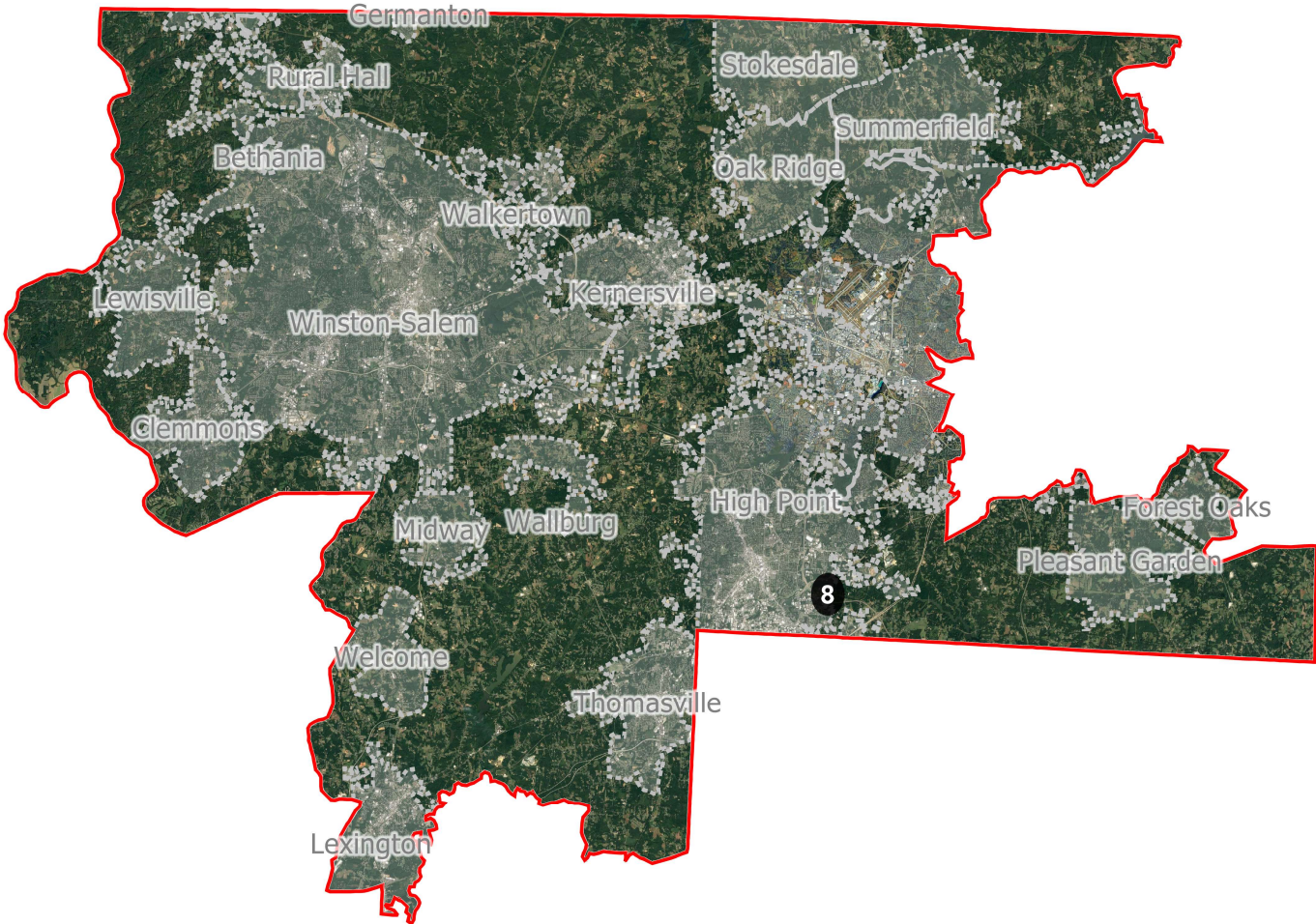
Field	Value
District	7
Population	745671
Deviation	0
% D 20_Pres	43.95%
% R 20_Pres	56.05%
% NH White CVAP 19	72.3%
% NH Black CVAP 19	19.39%
% NH Asian CVAP 19	1.24%
% H CVAP 19	4.92%

©2021 CALIPER



# District: 8

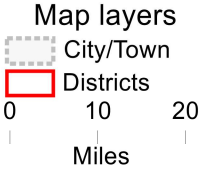
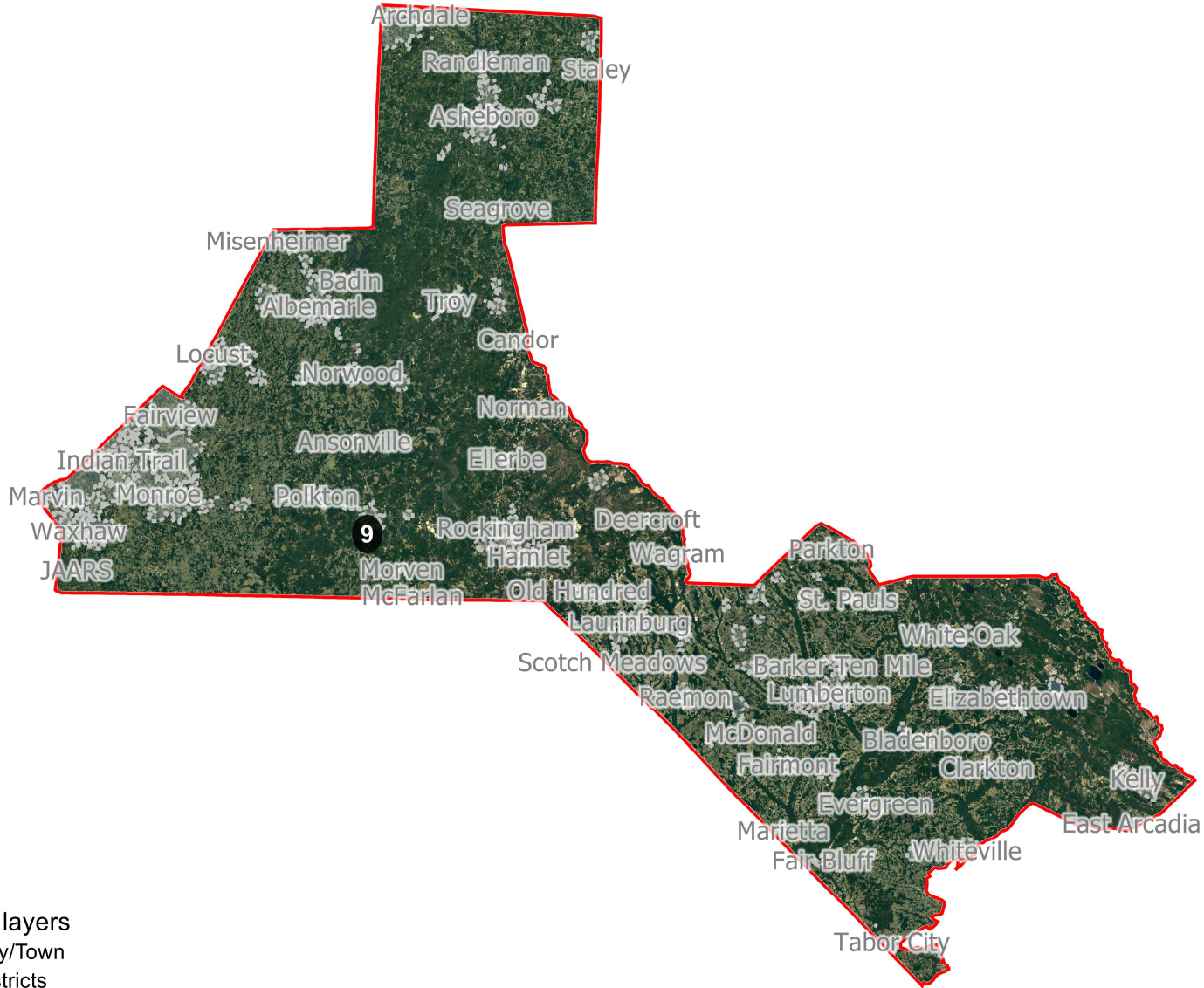
Field	Value
District	8
Population	745671
Deviation	0
% D 20_Pres	52.24%
% R 20_Pres	47.76%
% NH White CVAP 19	66.89%
% NH Black CVAP 19	25.29%
% NH Asian CVAP 19	2.23%
% H CVAP 19	4.42%





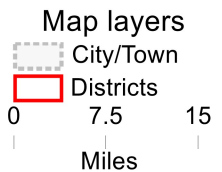
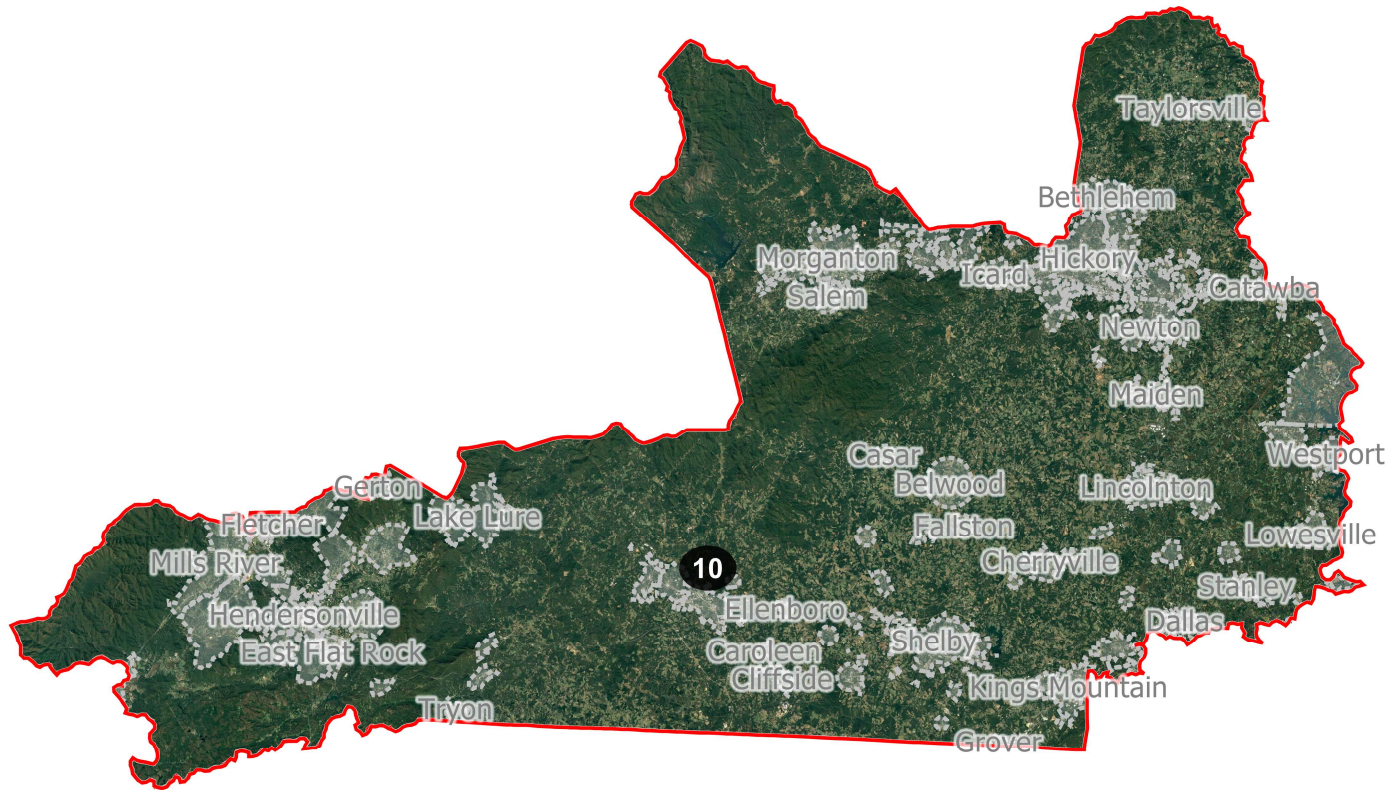
# District: 9

Field	Value
District	9
Population	745670
Deviation	-1
% D 20_Pres	35.07%
% R 20_Pres	64.93%
% NH White CVAP 19	66.73%
% NH Black CVAP 19	19.52%
% NH Asian CVAP 19	1.37%
% H CVAP 19	3.45%



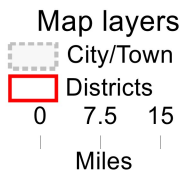
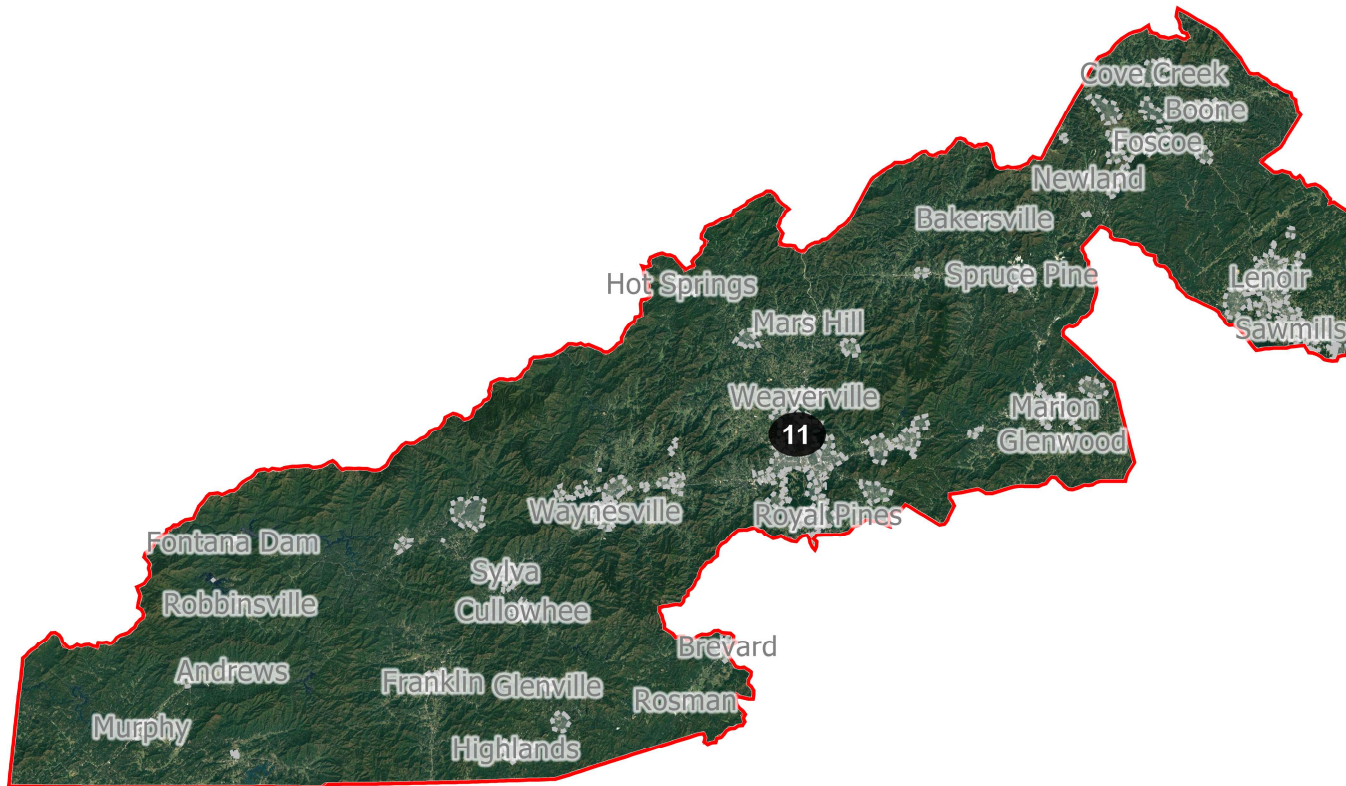
# District: 10

Field	Value
District	10
Population	745670
Deviation	-1
% D 20_Pres	31.32%
% R 20_Pres	68.68%
% NH White CVAP 19	85.76%
% NH Black CVAP 19	8.93%
% NH Asian CVAP 19	1.52%
% H CVAP 19	2.95%



# District: 11

Field	Value
District	11
Population	745670
Deviation	-1
% D 20_Pres	43.93%
% R 20_Pres	56.07%
% NH White CVAP 19	90.94%
% NH Black CVAP 19	3.91%
% NH Asian CVAP 19	0.76%
% H CVAP 19	2.2%





# District: 12



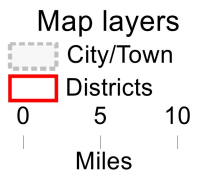
Field	Value
District	12
Population	745671
Deviation	0
% D 20_Pres	65.97%
% R 20_Pres	34.03%
% NH White CVAP 19	50.27%
% NH Black CVAP 19	40.29%
% NH Asian CVAP 19	2.98%
% H CVAP 19	5.29%

### Map layers

-  City/Town
  -  Districts
- 0 2.5 5  
Miles

# District: 13

Field	Value
District	13
Population	745671
Deviation	0
% D 20_Pres	46.69%
% R 20_Pres	53.31%
% NH White CVAP 19	67.33%
% NH Black CVAP 19	24.25%
% NH Asian CVAP 19	1.53%
% H CVAP 19	5.5%



# District: 14

Field	Value
District	14
Population	745671
Deviation	0
% D 20_Pres	58.14%
% R 20_Pres	41.86%
% NH White CVAP 19	68.81%
% NH Black CVAP 19	20.81%
% NH Asian CVAP 19	3.63%
% H CVAP 19	5.65%

