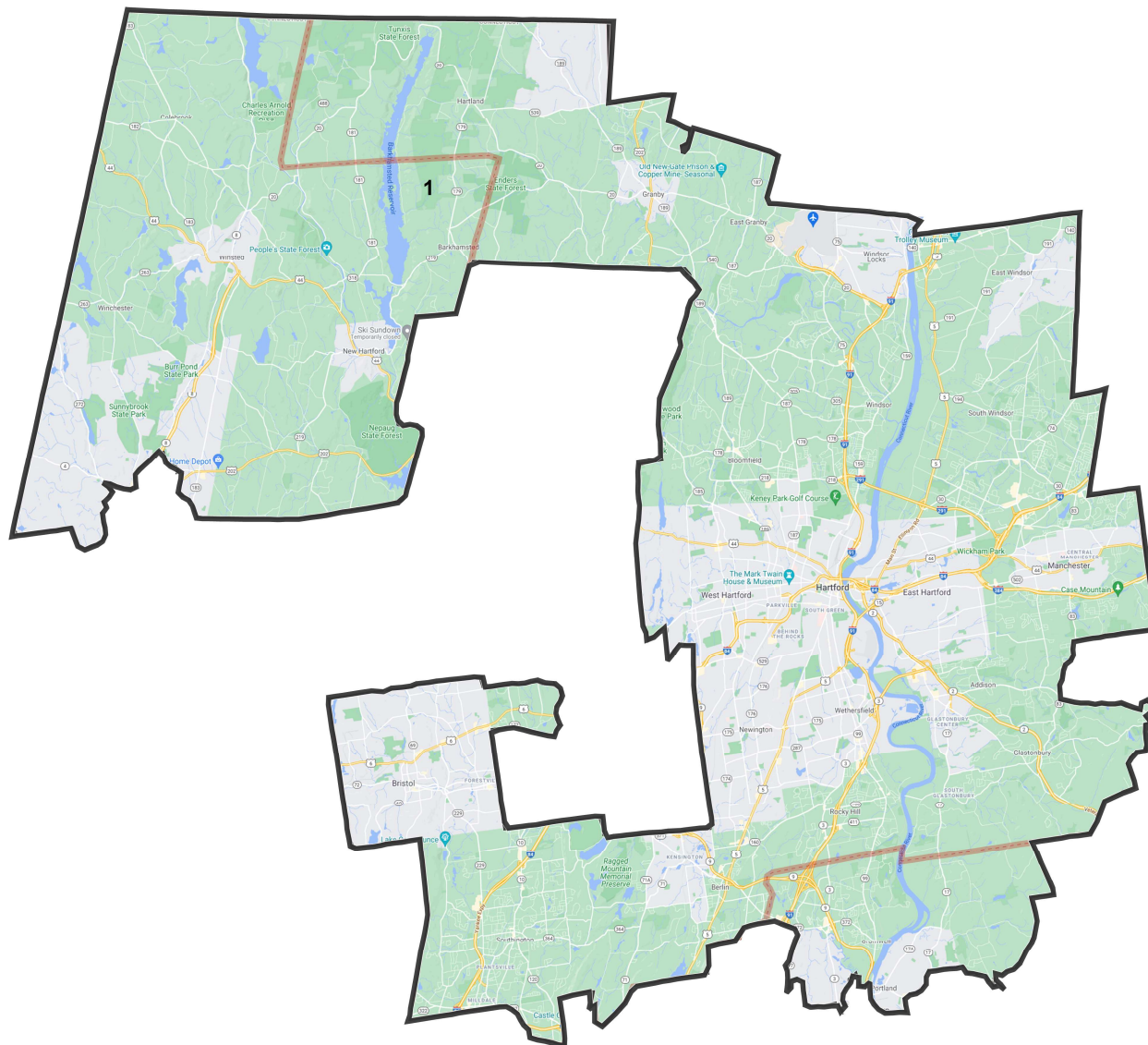
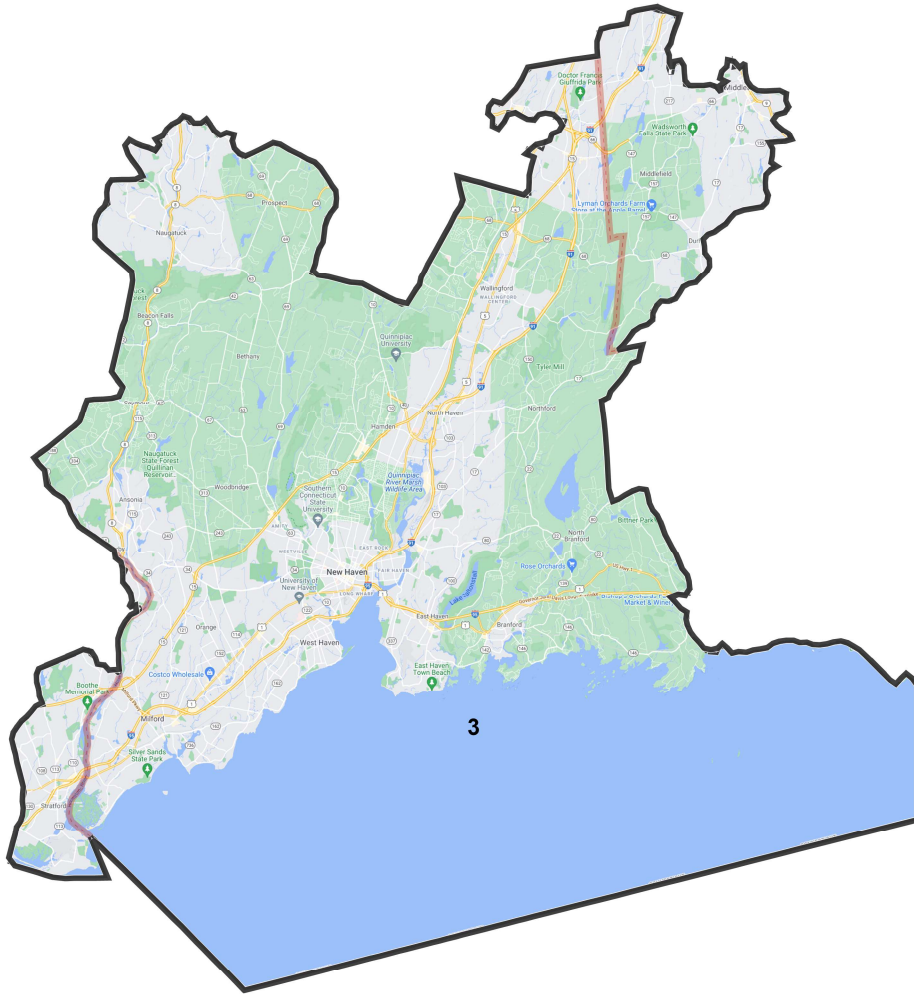


District: 1



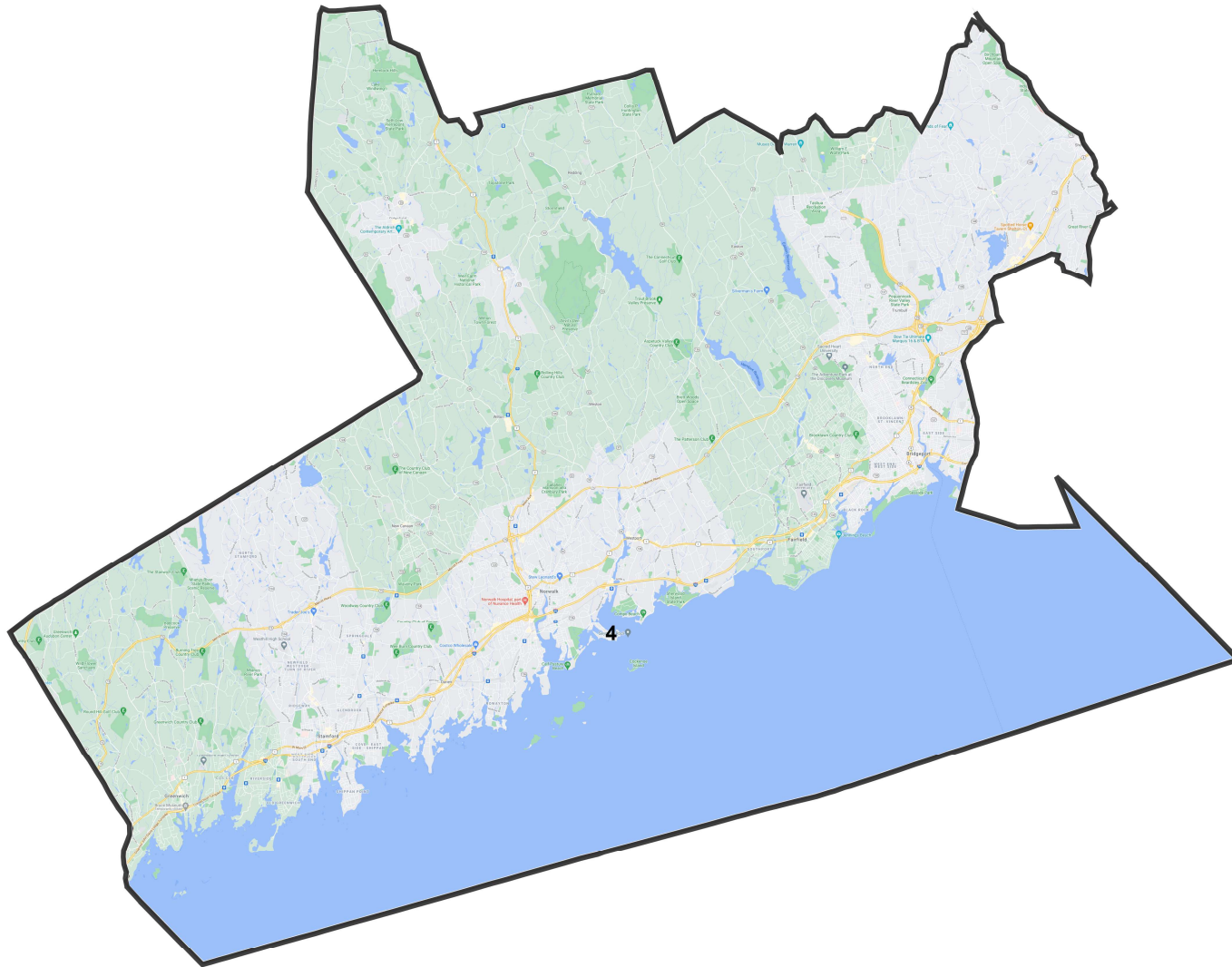
Field	Value
District	1
Population	721,190
Deviation	1
% Deviation	0.00%
Adj_18+_Pop	575,728
% NH CVAP 19	85.9%
% NH White CVAP 19	67.6%
% NH Black CVAP 19	13.9%
% NH Asian CVAP 19	3.5%
% H CVAP 19	14.1%
% D 20_Pres	64.2%
% R 20_Pres	35.8%
ernate Schwartzberg	2.51
Polsby Popper	0.16
Perimeter	233.98
Reock	0.46
nate Schwartzberg:1	2.51
Polsby Popper:1	0.16
% NH_Wht	57.44%
% AP_BlK	18.07%
% AP_Ind	1.59%
% AP_Asn	7.04%
% AP_Hwn	0.16%
% AP_Oth	14.42%
% Hispanic Origin	17.54%
% NH18+_Wht	61.25%
% 18+_AP_BlK	16.57%
% 18+_AP_Ind	1.48%
% 18+_AP_Asn	6.41%
% 18+_AP_Hwn	0.14%
% 18+_AP_Oth	13.1%
% H18+_Pop	15.29%
District Label	1 0%
% 20_Pres	49.73%

District: 3



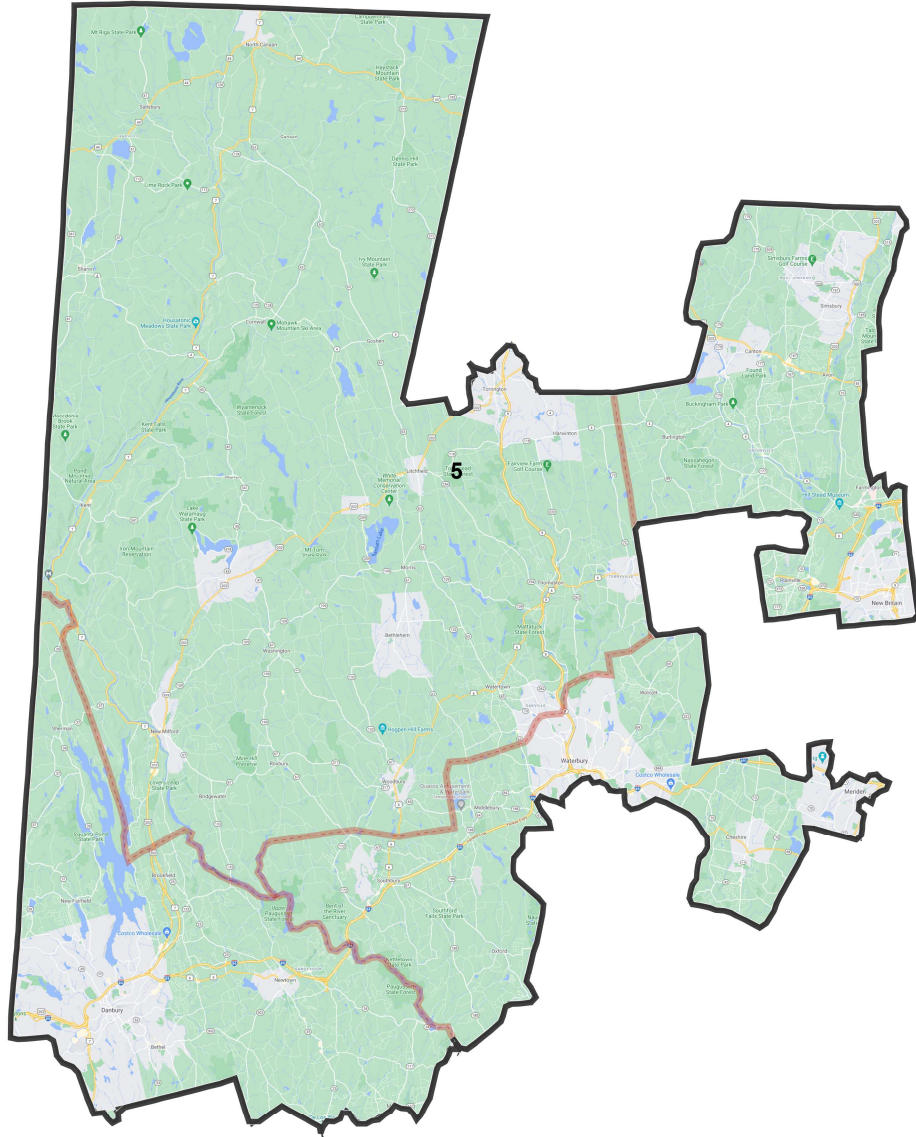
Field	Value
District	3
Population	721,189
Deviation	0
% Deviation	0.00%
Adj_18+_Pop	585,708
% NH CVAP 19	87.7%
% NH White CVAP 19	70.3%
% NH Black CVAP 19	13.4%
% NH Asian CVAP 19	3.2%
% H CVAP 19	12.3%
% D 20_Pres	60.5%
% R 20_Pres	39.5%
ernate Schwartzberg	2
Polsby Popper	0.25
Perimeter	184.82
Reock	0.53
nate Schwartzberg:1	2
Polsby Popper:1	0.25
% NH_Wht	59.42%
% AP_BlK	17.19%
% AP_Ind	1.67%
% AP_Asn	5.59%
% AP_Hwn	0.16%
% AP_Oth	14.21%
% Hispanic Origin	17.63%
% NH18+_Wht	63.5%
% 18+_AP_BlK	15.47%
% 18+_AP_Ind	1.53%
% 18+_AP_Asn	5.33%
% 18+_AP_Hwn	0.14%
% 18+_AP_Oth	12.56%
% H18+_Pop	15.02%
District Label	3 0%
% 20_Pres	48.44%

District: 4



Field	Value
District	4
Population	721,188
Deviation	-1
% Deviation	-0.00%
Adj_18+_Pop	557,630
% NH CVAP 19	86.0%
% NH White CVAP 19	68.8%
% NH Black CVAP 19	12.1%
% NH Asian CVAP 19	4.4%
% H CVAP 19	14.0%
% D 20_Pres	66.1%
% R 20_Pres	33.9%
ernate Schwartzberg	1.65
Polsby Popper	0.37
Perimeter	143.82
Reock	0.52
nate Schwartzberg:1	1.65
Polsby Popper:1	0.37
% NH_Wht	56.54%
% AP_BlK	14.1%
% AP_Ind	1.31%
% AP_Asn	6.8%
% AP_Hwn	0.13%
% AP_Oth	19.34%
% Hispanic Origin	21.76%
% NH18+_Wht	59.22%
% 18+_AP_BlK	13.52%
% 18+_AP_Ind	1.22%
% 18+_AP_Asn	6.24%
% 18+_AP_Hwn	0.13%
% 18+_AP_Oth	18.06%
% H18+_Pop	19.96%
District Label	4 -0%
% 20_Pres	48.21%

District: 5



Field	Value
District	5
Population	721,189
Deviation	0
% Deviation	0.00%
Adj_18+_Pop	567,744
% NH CVAP 19	86.6%
% NH White CVAP 19	76.6%
% NH Black CVAP 19	6.5%
% NH Asian CVAP 19	2.9%
% H CVAP 19	13.4%
% D 20_Pres	54.7%
% R 20_Pres	45.3%
ernate Schwartzberg	2.16
Polsby Popper	0.21
Perimeter	277.5
Reock	0.52
nate Schwartzberg:1	2.16
Polsby Popper:1	0.21
% NH_Wht	64.38%
% AP_BlK	9.5%
% AP_Ind	1.57%
% AP_Asn	4.6%
% AP_Hwn	0.15%
% AP_Oth	17.56%
% Hispanic Origin	20.23%
% NH18+_Wht	68.3%
% 18+_AP_BlK	8.5%
% 18+_AP_Ind	1.47%
% 18+_AP_Asn	4.13%
% 18+_AP_Hwn	0.15%
% 18+_AP_Oth	15.7%
% H18+_Pop	17.39%
District Label	5 0%
% 20_Pres	49.25%