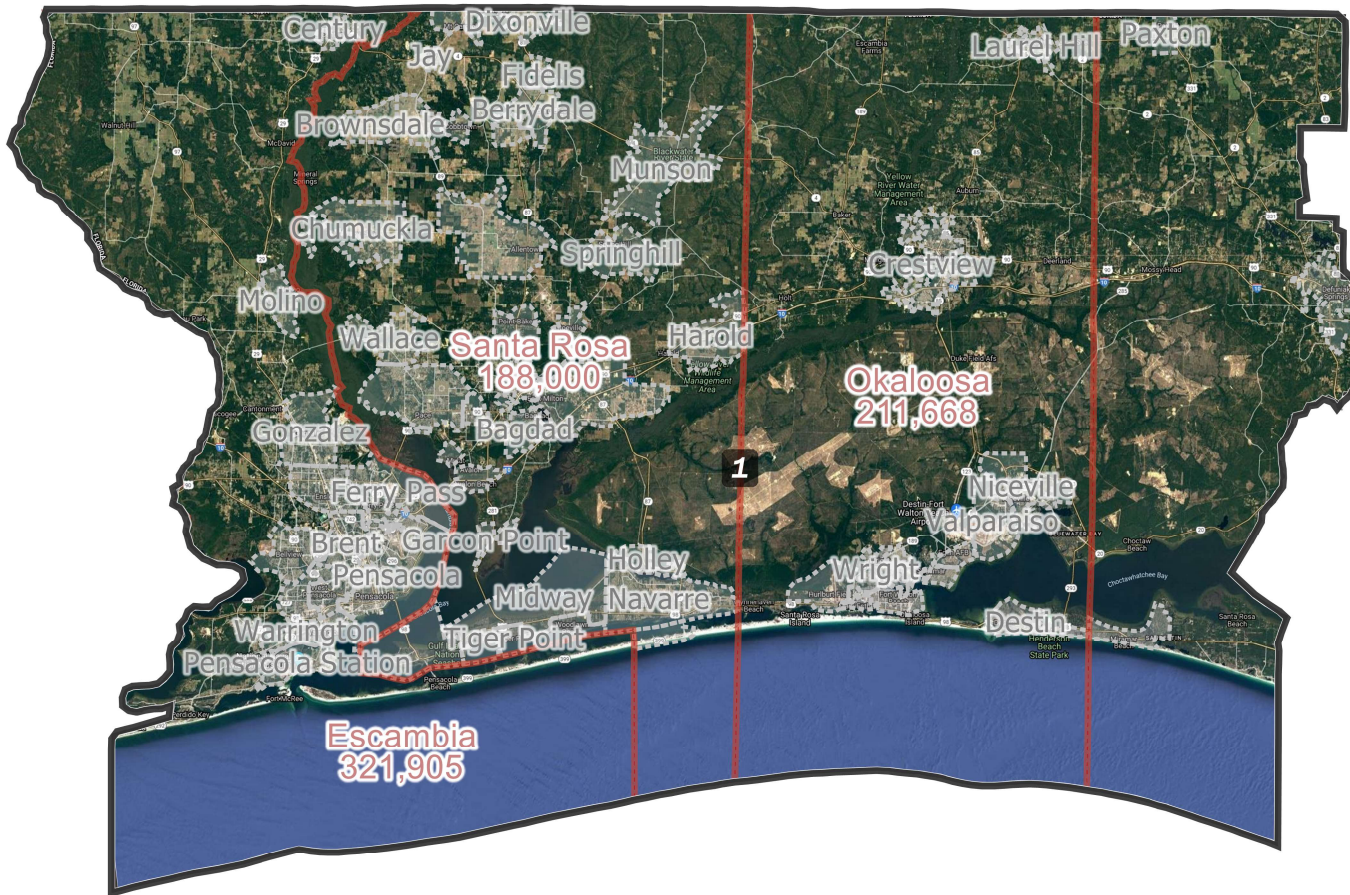


District: 1



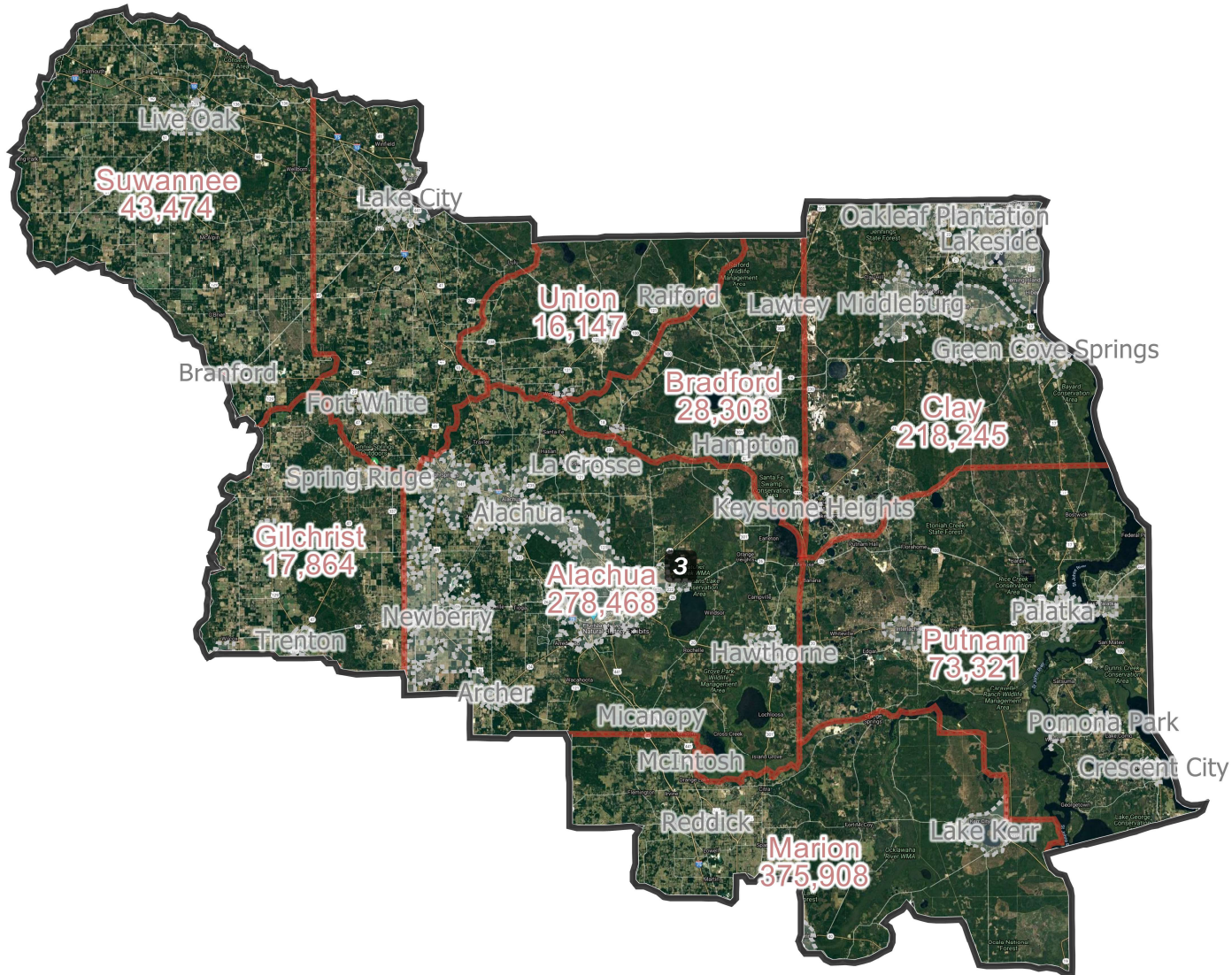
| Field | Value |
|---------------------|-----------|
| District | 1 |
| Population | 769220 |
| Deviation | -1 |
| % Deviation | -0% |
| ernate Schwartzberg | 1.47 |
| Polsby Popper | 0.46 |
| Perimeter | 345.81 |
| Reock | 0.52 |
| 18+_Pop | 605573 |
| 18+_AP_Blk | 82772 |
| % 18+_AP_Blk | 13.67% |
| NH18+_Wht | 436211 |
| % NH18+_Wht | 72.03% |
| H18+_Pop | 40468 |
| % H18+_Pop | 6.68% |
| Total CVAP 19 | 562586.41 |
| NH White CVAP 19 | 429232.88 |
| % NH White CVAP 19 | 76.3% |
| NH Black CVAP 19 | 77484.82 |
| % NH Black CVAP 19 | 13.77% |
| NH Asian CVAP 19 | 16142.90 |
| % NH Asian CVAP 19 | 2.87% |
| H CVAP 19 | 28378.19 |
| % H CVAP 19 | 5.04% |

District: 2



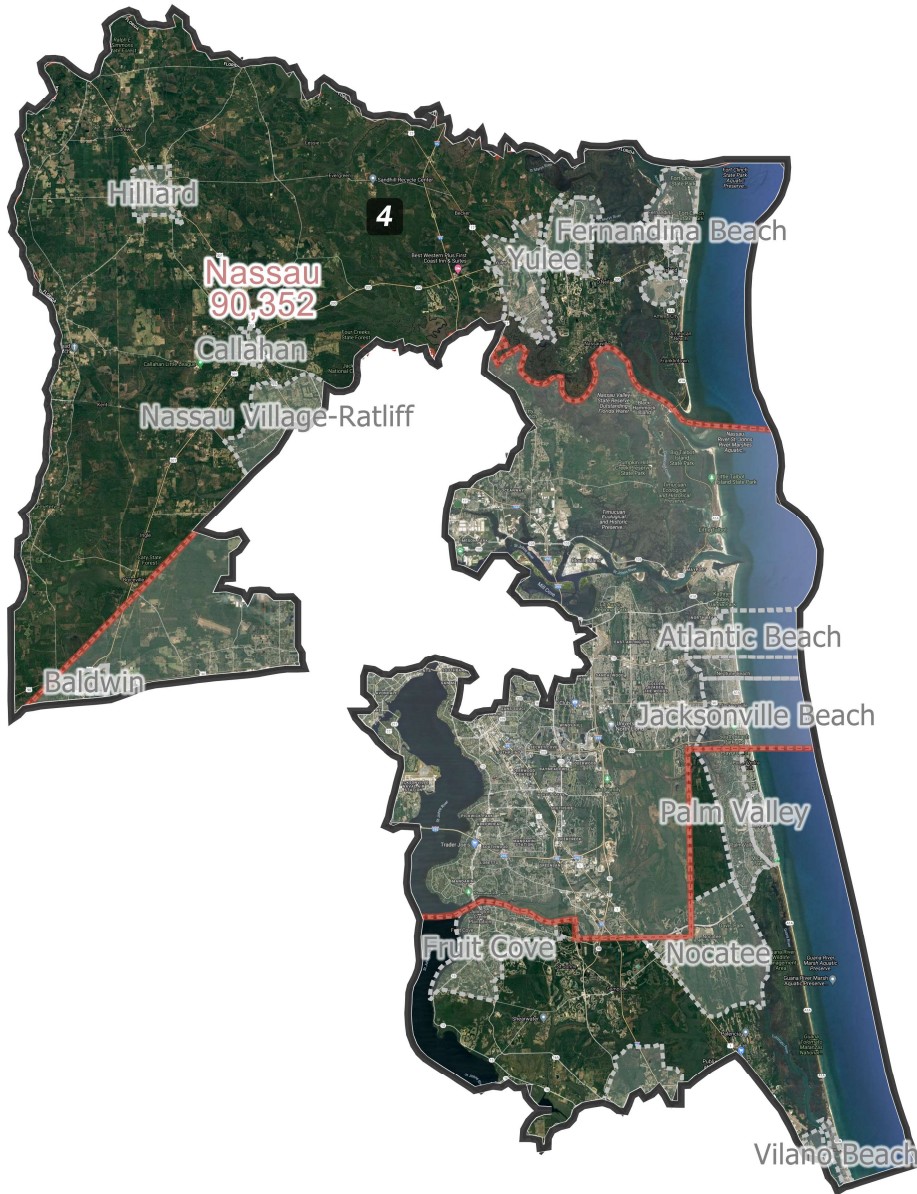
| Field | Value |
|---------------------|-----------|
| District | 2 |
| Population | 769221 |
| Deviation | 0 |
| % Deviation | 0% |
| ernate Schwartzberg | 2.28 |
| Polsby Popper | 0.19 |
| Perimeter | 986.64 |
| Reock | 0.24 |
| 18+_Pop | 628454 |
| 18+_AP_Blk | 65216 |
| % 18+_AP_Blk | 10.38% |
| NH18+_Wht | 493455 |
| % NH18+_Wht | 78.52% |
| H18+_Pop | 37436 |
| % H18+_Pop | 5.96% |
| Total CVAP 19 | 595304.23 |
| NH White CVAP 19 | 483998.99 |
| % NH White CVAP 19 | 81.3% |
| NH Black CVAP 19 | 65446.45 |
| % NH Black CVAP 19 | 10.99% |
| NH Asian CVAP 19 | 9530.33 |
| % NH Asian CVAP 19 | 1.6% |
| H CVAP 19 | 27750.54 |
| % H CVAP 19 | 4.66% |

District: 3



| Field | Value |
|---------------------|-----------|
| District | 3 |
| Population | 769221 |
| Deviation | 0 |
| % Deviation | 0% |
| ernate Schwartzberg | 1.73 |
| Polsby Popper | 0.34 |
| Perimeter | 439.23 |
| Reock | 0.42 |
| 18+_Pop | 611970 |
| 18+_AP_BIK | 93576 |
| % 18+_AP_BIK | 15.29% |
| NH18+_Wht | 420401 |
| % NH18+_Wht | 68.7% |
| H18+_Pop | 57626 |
| % H18+_Pop | 9.42% |
| Total CVAP 19 | 569114.79 |
| NH White CVAP 19 | 419881.44 |
| % NH White CVAP 19 | 73.78% |
| NH Black CVAP 19 | 87141.72 |
| % NH Black CVAP 19 | 15.31% |
| NH Asian CVAP 19 | 14483.00 |
| % NH Asian CVAP 19 | 2.54% |
| H CVAP 19 | 41322.33 |
| % H CVAP 19 | 7.26% |

District: 4



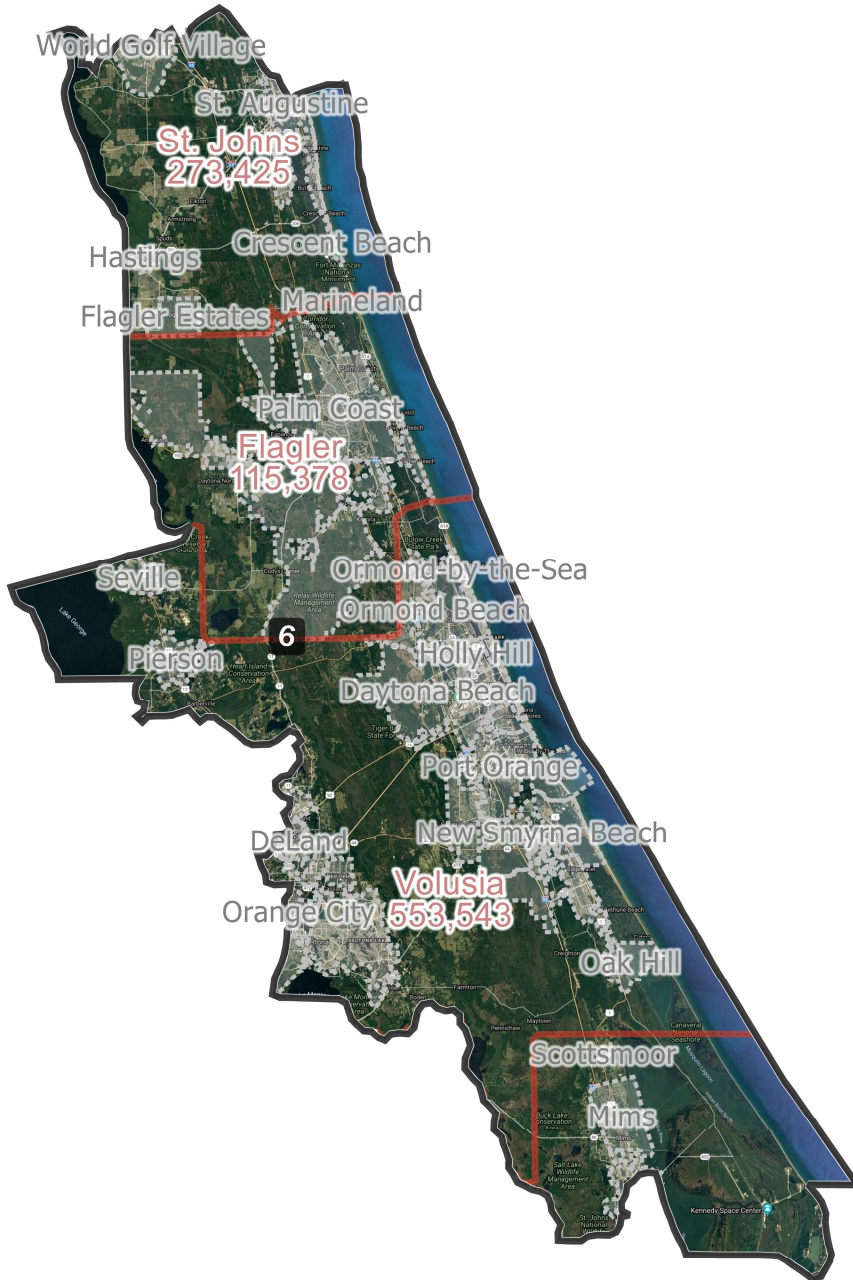
| Field | Value |
|---------------------|-----------|
| District | 4 |
| Population | 769221 |
| Deviation | 0 |
| % Deviation | 0% |
| ernate Schwartzberg | 2.69 |
| Polsby Popper | 0.14 |
| Perimeter | 380.73 |
| Reock | 0.35 |
| 18+_Pop | 609262 |
| 18+_AP_BlK | 62698 |
| % 18+_AP_BlK | 10.29% |
| NH18+_Wht | 437449 |
| % NH18+_Wht | 71.8% |
| H18+_Pop | 56595 |
| % H18+_Pop | 9.29% |
| Total CVAP 19 | 525727.32 |
| NH White CVAP 19 | 409607.80 |
| % NH White CVAP 19 | 77.91% |
| NH Black CVAP 19 | 51890.59 |
| % NH Black CVAP 19 | 9.87% |
| NH Asian CVAP 19 | 22649.72 |
| % NH Asian CVAP 19 | 4.31% |
| H CVAP 19 | 35760.74 |
| % H CVAP 19 | 6.8% |

District: 5



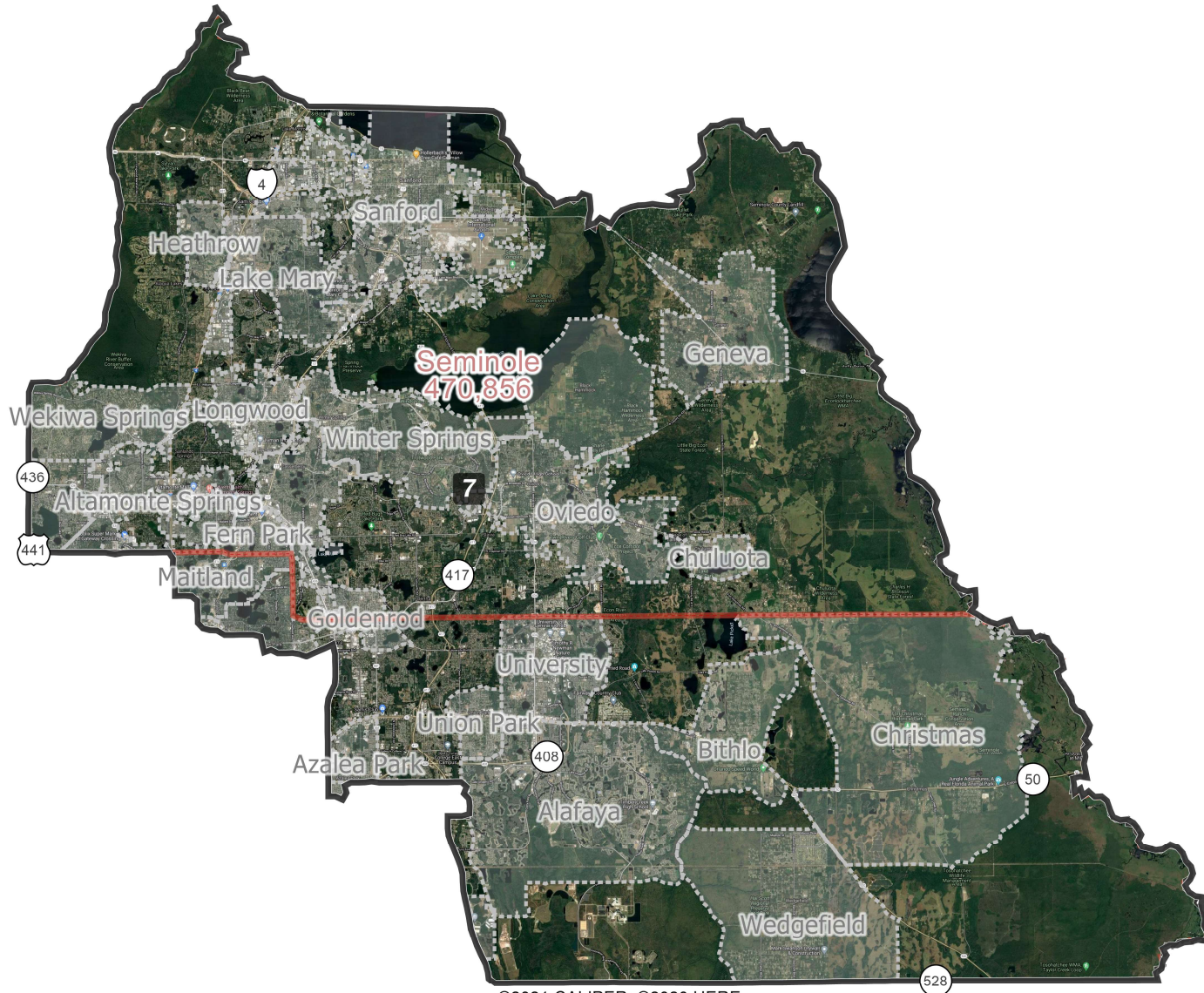
| Field | Value |
|---------------------|-----------|
| District | 5 |
| Population | 769221 |
| Deviation | 0 |
| % Deviation | 0% |
| ernate Schwartzberg | 3.22 |
| Polsby Popper | 0.1 |
| Perimeter | 741.59 |
| Reock | 0.12 |
| 18+_Pop | 597084 |
| 18+_AP_BlK | 273042 |
| % 18+_AP_BlK | 45.73% |
| NH18+_Wht | 245675 |
| % NH18+_Wht | 41.15% |
| H18+_Pop | 52611 |
| % H18+_Pop | 8.81% |
| Total CVAP 19 | 556314.16 |
| NH White CVAP 19 | 254008.58 |
| % NH White CVAP 19 | 45.66% |
| NH Black CVAP 19 | 250536.23 |
| % NH Black CVAP 19 | 45.04% |
| NH Asian CVAP 19 | 12485.05 |
| % NH Asian CVAP 19 | 2.24% |
| H CVAP 19 | 32890.52 |
| % H CVAP 19 | 5.91% |

District: 6



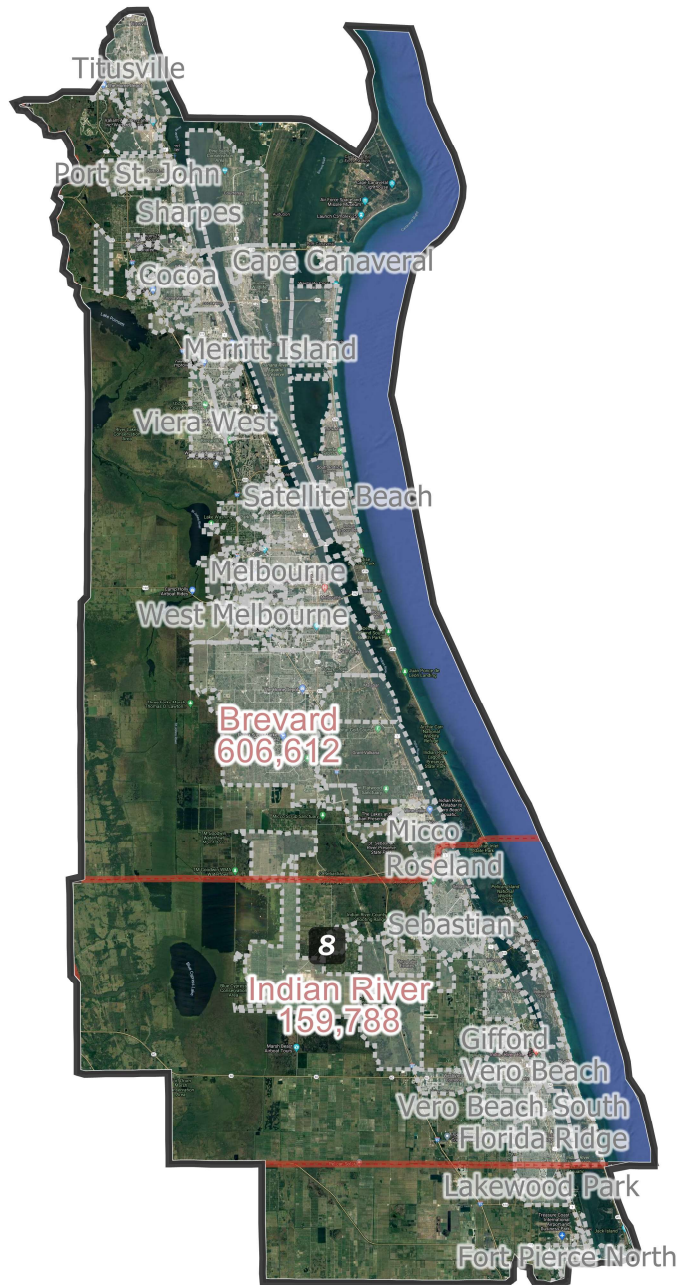
| Field | Value |
|---------------------|-----------|
| District | 6 |
| Population | 769221 |
| Deviation | 0 |
| % Deviation | 0% |
| ernate Schwartzberg | 2.09 |
| Polsby Popper | 0.23 |
| Perimeter | 386.65 |
| Reock | 0.24 |
| 18+_Pop | 636166 |
| 18+_AP_BlK | 64911 |
| % 18+_AP_BlK | 10.2% |
| NH18+_Wht | 471898 |
| % NH18+_Wht | 74.18% |
| H18+_Pop | 71390 |
| % H18+_Pop | 11.22% |
| Total CVAP 19 | 591601.67 |
| NH White CVAP 19 | 460097.24 |
| % NH White CVAP 19 | 77.77% |
| NH Black CVAP 19 | 57282.67 |
| % NH Black CVAP 19 | 9.68% |
| NH Asian CVAP 19 | 9490.91 |
| % NH Asian CVAP 19 | 1.6% |
| H CVAP 19 | 59588.75 |
| % H CVAP 19 | 10.07% |

District: 7



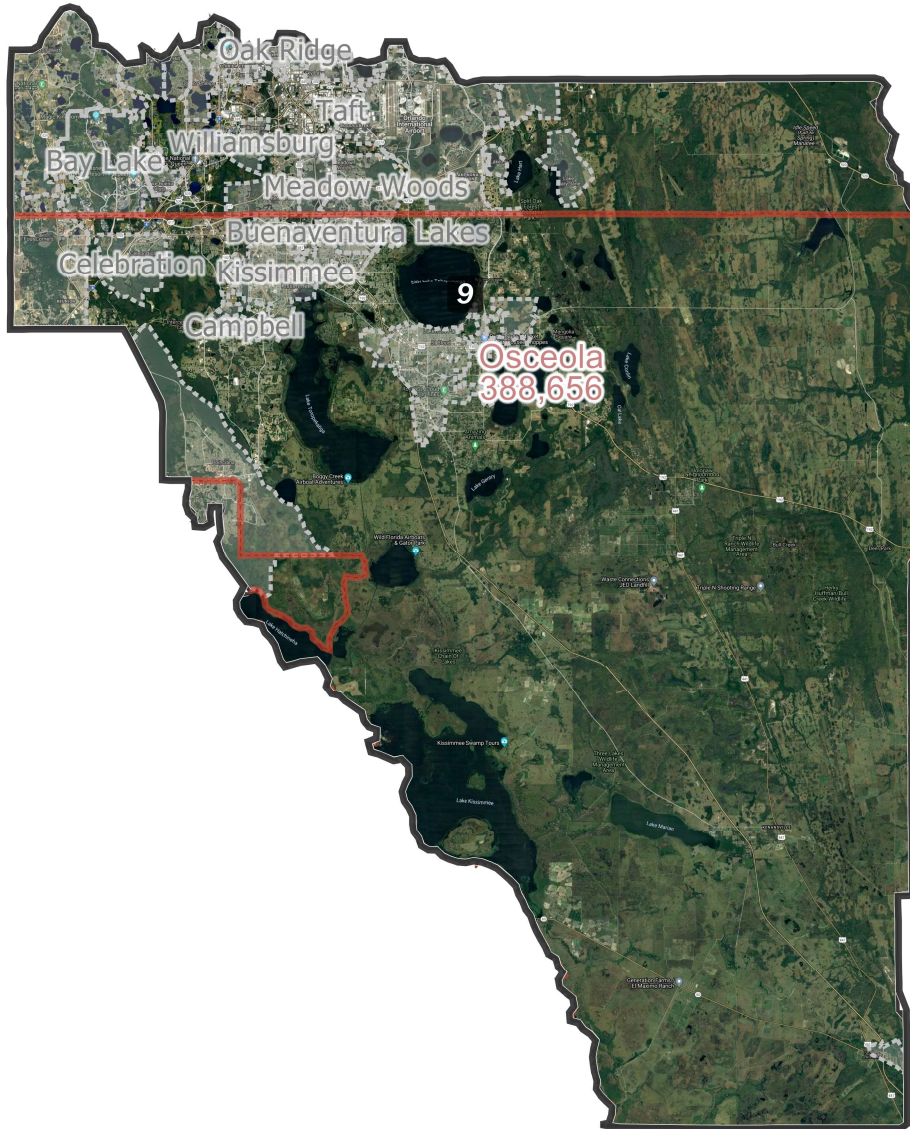
| Field | Value |
|---------------------|-----------|
| District | 7 |
| Population | 769221 |
| Deviation | 0 |
| % Deviation | 0% |
| ernate Schwartzberg | 1.67 |
| Polsby Popper | 0.36 |
| Perimeter | 144.26 |
| Reock | 0.45 |
| 18+_Pop | 611218 |
| 18+_AP_Blk | 78843 |
| % 18+_AP_Blk | 12.9% |
| NH18+_Wht | 327252 |
| % NH18+_Wht | 53.54% |
| H18+_Pop | 160089 |
| % H18+_Pop | 26.19% |
| Total CVAP 19 | 554664.20 |
| NH White CVAP 19 | 335650.01 |
| % NH White CVAP 19 | 60.51% |
| NH Black CVAP 19 | 58745.37 |
| % NH Black CVAP 19 | 10.59% |
| NH Asian CVAP 19 | 23979.76 |
| % NH Asian CVAP 19 | 4.32% |
| H CVAP 19 | 131406.55 |
| % H CVAP 19 | 23.69% |

District: 8



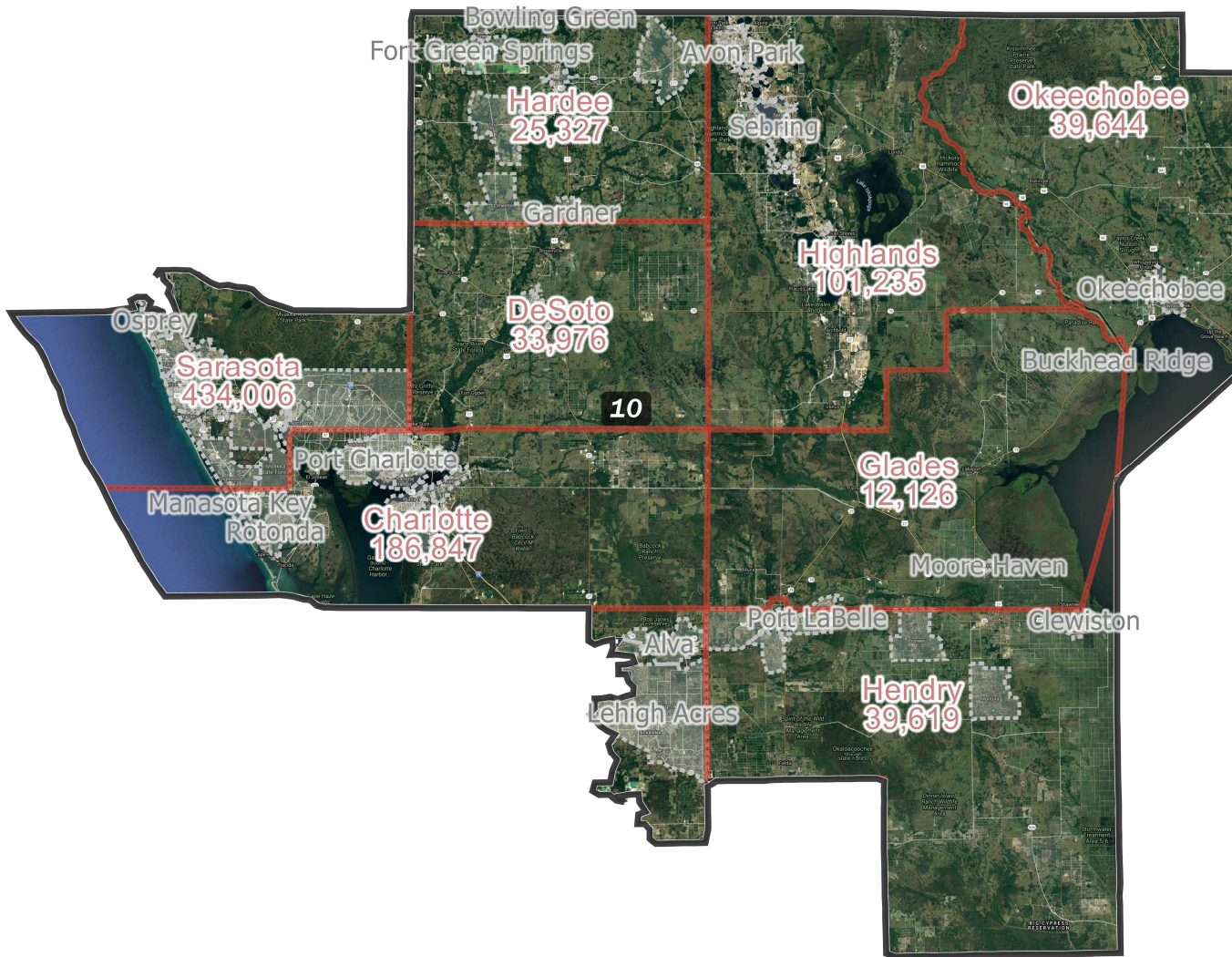
| Field | Value |
|---------------------|-----------|
| District | 8 |
| Population | 769221 |
| Deviation | 0 |
| % Deviation | 0% |
| ernate Schwartzberg | 1.69 |
| Polsby Popper | 0.35 |
| Perimeter | 265.97 |
| Reock | 0.34 |
| 18+_Pop | 634303 |
| 18+_AP_Bl | 65040 |
| % 18+_AP_Bl | 10.25% |
| NH18+_Wh | 471228 |
| % NH18+_Wh | 74.29% |
| H18+_Pop | 64527 |
| % H18+_Pop | 10.17% |
| Total CVAP 19 | 587354.74 |
| NH White CVAP 19 | 462784.19 |
| % NH White CVAP 19 | 78.79% |
| NH Black CVAP 19 | 57323.26 |
| % NH Black CVAP 19 | 9.76% |
| NH Asian CVAP 19 | 11862.92 |
| % NH Asian CVAP 19 | 2.02% |
| H CVAP 19 | 49504.67 |
| % H CVAP 19 | 8.43% |

District: 9



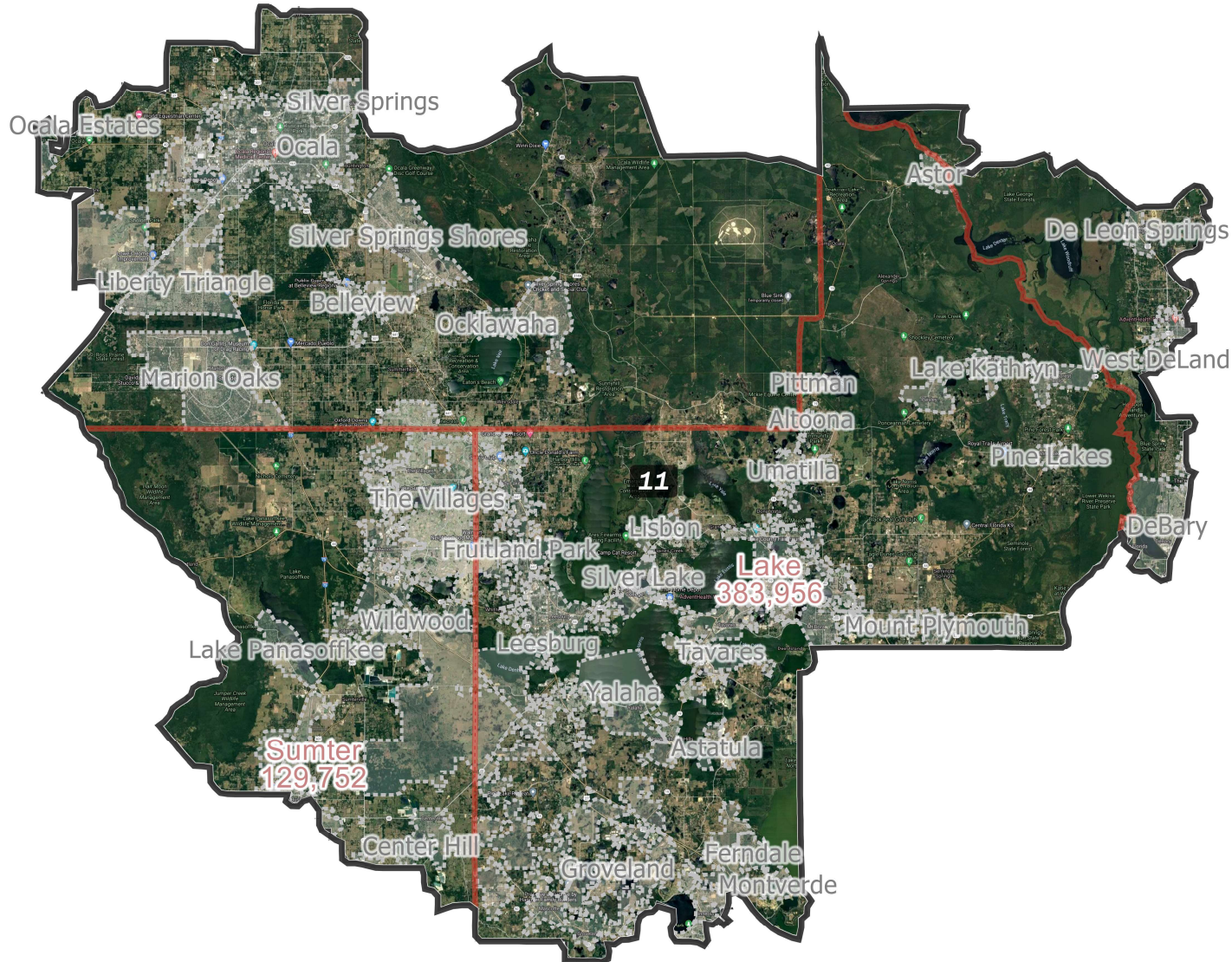
| Field | Value |
|---------------------|-----------|
| District | 9 |
| Population | 769221 |
| Deviation | 0 |
| % Deviation | 0% |
| ernate Schwartzberg | 1.56 |
| Polsby Popper | 0.41 |
| Perimeter | 242.39 |
| Reock | 0.44 |
| 18+_Pop | 587485 |
| 18+_AP_BlK | 76313 |
| % 18+_AP_BlK | 12.99% |
| NH18+_Wht | 197585 |
| % NH18+_Wht | 33.63% |
| H18+_Pop | 275006 |
| % H18+_Pop | 46.81% |
| Total CVAP 19 | 435322.03 |
| NH White CVAP 19 | 173747.04 |
| % NH White CVAP 19 | 39.91% |
| NH Black CVAP 19 | 44194.82 |
| % NH Black CVAP 19 | 10.15% |
| NH Asian CVAP 19 | 21910.53 |
| % NH Asian CVAP 19 | 5.03% |
| H CVAP 19 | 191506.72 |
| % H CVAP 19 | 43.99% |

District: 10



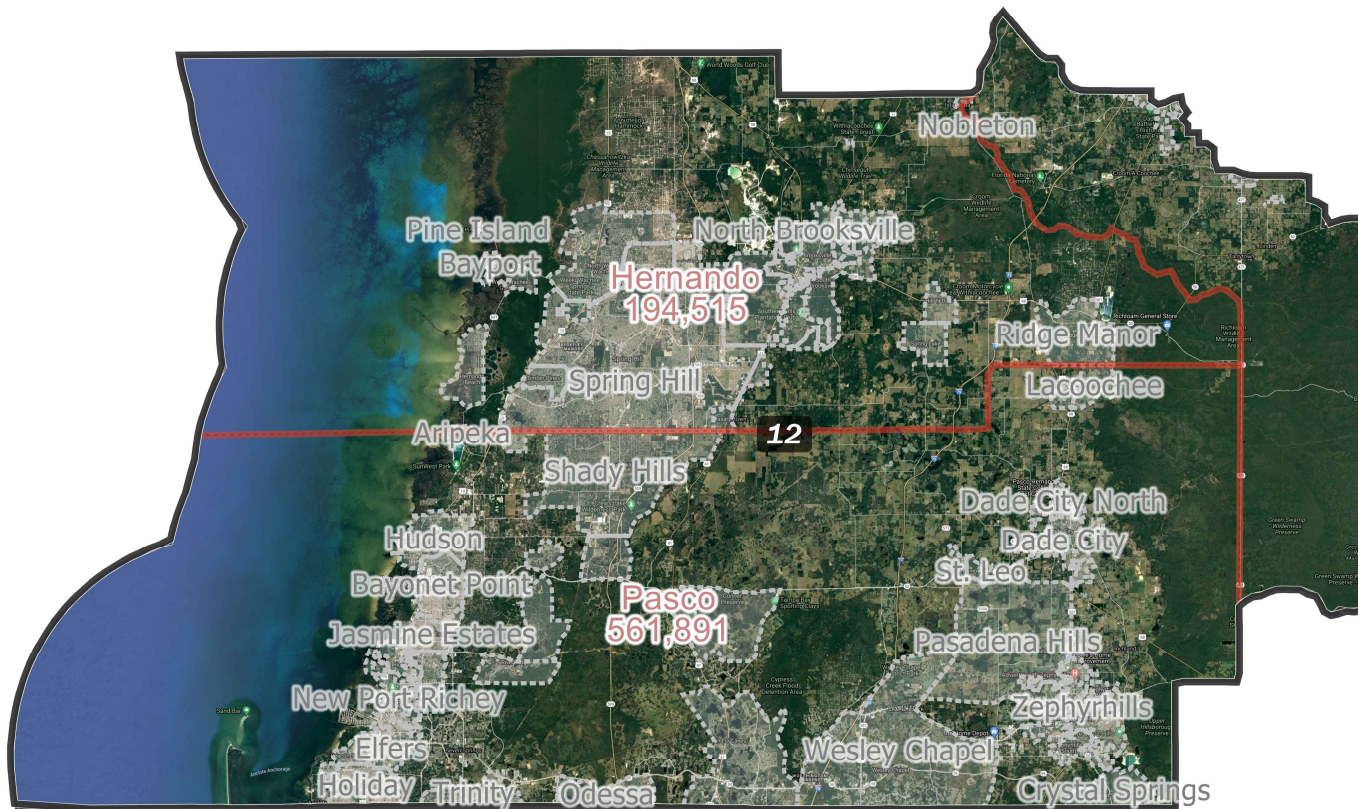
| Field | Value |
|---------------------|-----------|
| District | 10 |
| Population | 769221 |
| Deviation | 0 |
| % Deviation | 0% |
| ernate Schwartzberg | 1.59 |
| Polsby Popper | 0.4 |
| Perimeter | 478.37 |
| Reock | 0.49 |
| 18+_Pop | 634506 |
| 18+_AP_Blk | 51151 |
| % 18+_AP_Blk | 8.06% |
| NH18+_Wht | 454399 |
| % NH18+_Wht | 71.61% |
| H18+_Pop | 108404 |
| % H18+_Pop | 17.08% |
| Total CVAP 19 | 580225.28 |
| NH White CVAP 19 | 447796.05 |
| % NH White CVAP 19 | 77.18% |
| NH Black CVAP 19 | 43184.55 |
| % NH Black CVAP 19 | 7.44% |
| NH Asian CVAP 19 | 6491.86 |
| % NH Asian CVAP 19 | 1.12% |
| H CVAP 19 | 76668.19 |
| % H CVAP 19 | 13.21% |

District: 11



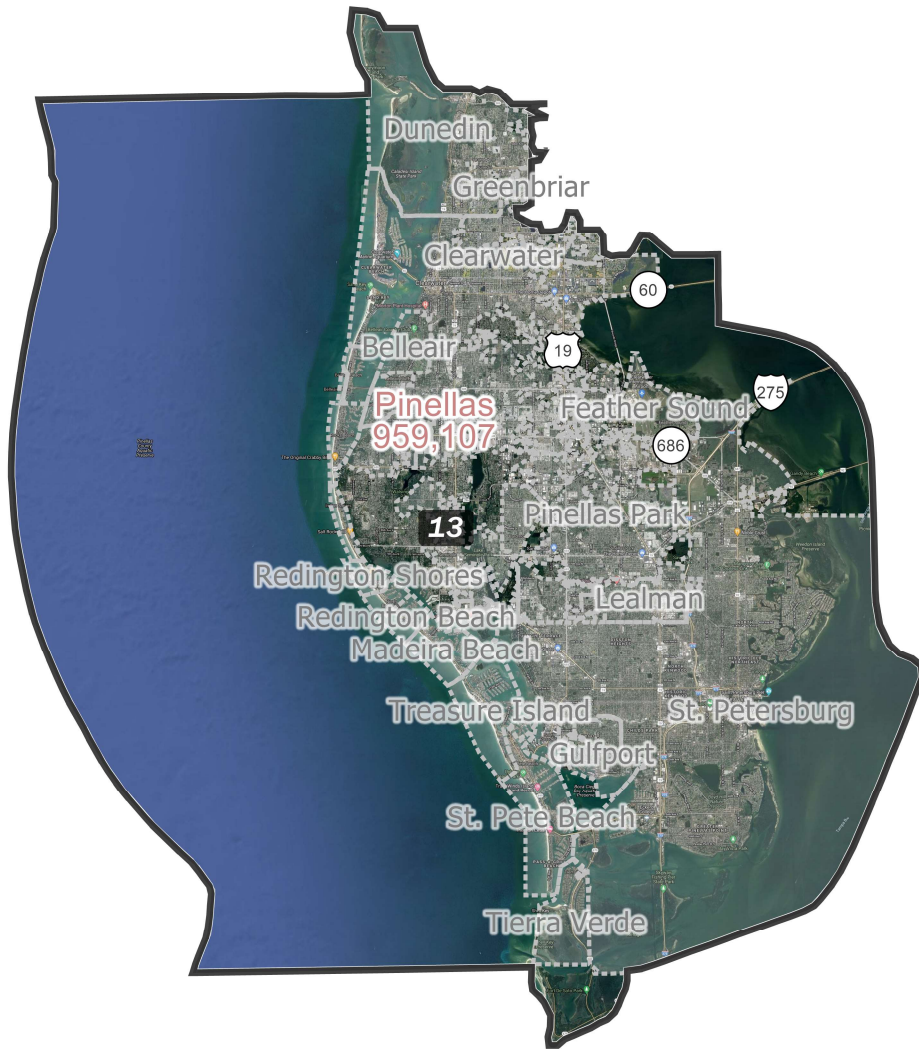
| Field | Value |
|---------------------|-----------|
| District | 11 |
| Population | 769221 |
| Deviation | 0 |
| % Deviation | 0% |
| ernate Schwartzberg | 1.92 |
| Polsby Popper | 0.27 |
| Perimeter | 315.52 |
| Reock | 0.6 |
| 18+_Pop | 642662 |
| 18+_AP_BIK | 64264 |
| % 18+_AP_BIK | 10% |
| NH18+_Wht | 476964 |
| % NH18+_Wht | 74.22% |
| H18+_Pop | 75989 |
| % H18+_Pop | 11.82% |
| Total CVAP 19 | 577105.79 |
| NH White CVAP 19 | 456473.89 |
| % NH White CVAP 19 | 79.1% |
| NH Black CVAP 19 | 54920.02 |
| % NH Black CVAP 19 | 9.52% |
| NH Asian CVAP 19 | 8239.23 |
| % NH Asian CVAP 19 | 1.43% |
| H CVAP 19 | 53300.67 |
| % H CVAP 19 | 9.24% |

District: 12



| Field | Value |
|---------------------|-----------|
| District | 12 |
| Population | 769221 |
| Deviation | 0 |
| % Deviation | 0% |
| ernate Schwartzberg | 1.33 |
| Polsby Popper | 0.56 |
| Perimeter | 208.21 |
| Reock | 0.5 |
| 18+_Pop | 617334 |
| 18+_AP_Blk | 41017 |
| % 18+_AP_Blk | 6.64% |
| NH18+_Wht | 458389 |
| % NH18+_Wht | 74.25% |
| H18+_Pop | 86773 |
| % H18+_Pop | 14.06% |
| Total CVAP 19 | 556300.50 |
| NH White CVAP 19 | 445435.85 |
| % NH White CVAP 19 | 80.07% |
| NH Black CVAP 19 | 29475.85 |
| % NH Black CVAP 19 | 5.3% |
| NH Asian CVAP 19 | 10136.79 |
| % NH Asian CVAP 19 | 1.82% |
| H CVAP 19 | 66196.23 |
| % H CVAP 19 | 11.9% |

District: 13



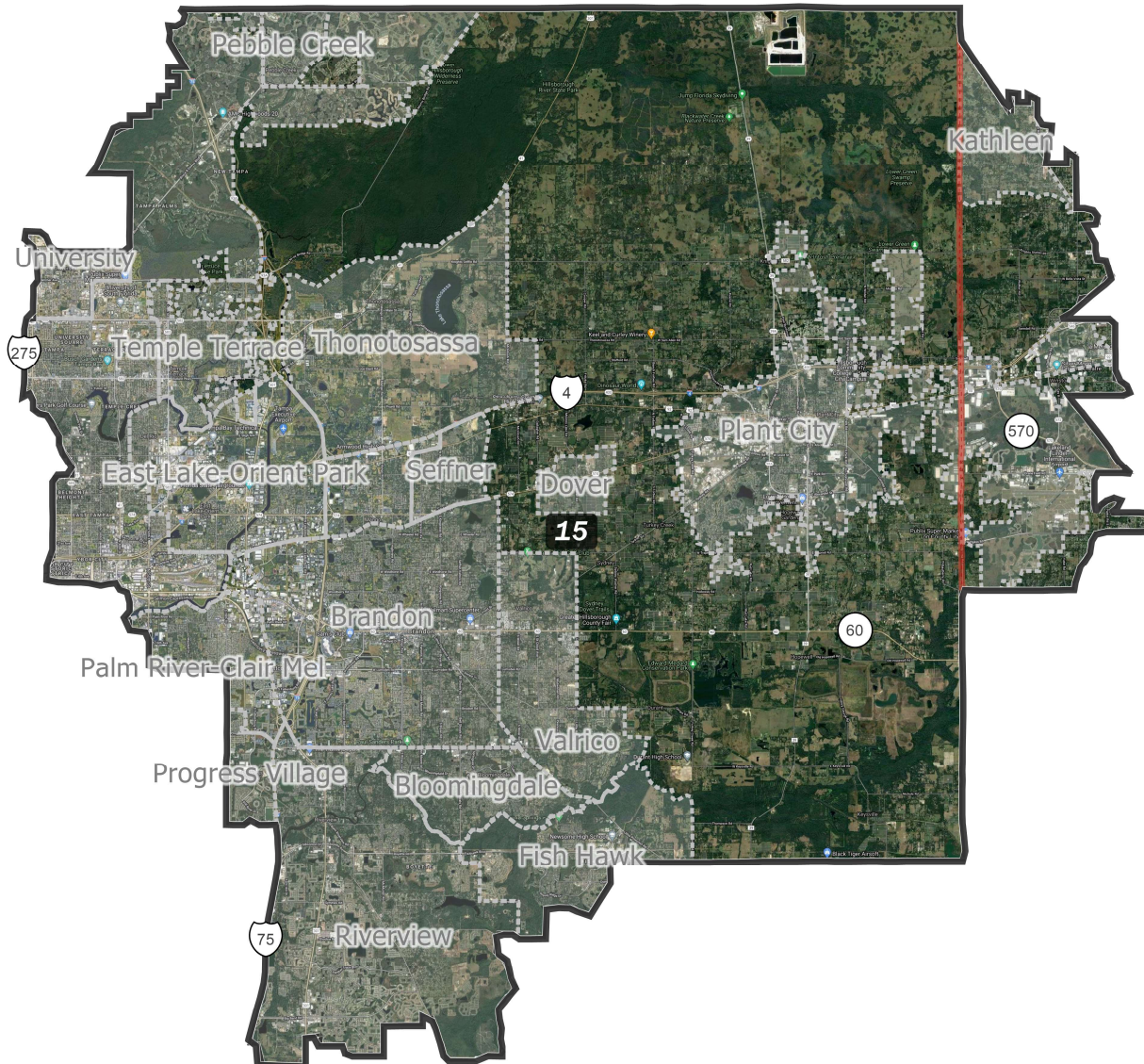
| Field | Value |
|---------------------|-----------|
| District | 13 |
| Population | 769221 |
| Deviation | 0 |
| % Deviation | 0% |
| ernate Schwartzberg | 1.31 |
| Polsby Popper | 0.58 |
| Perimeter | 119.35 |
| Reock | 0.65 |
| 18+_Pop | 650961 |
| 18+_AP_Bl | 74317 |
| % 18+_AP_Bl | 11.42% |
| NH18+_Wht | 472445 |
| % NH18+_Wht | 72.58% |
| H18+_Pop | 62764 |
| % H18+_Pop | 9.64% |
| Total CVAP 19 | 611494.77 |
| NH White CVAP 19 | 474498.05 |
| % NH White CVAP 19 | 77.6% |
| NH Black CVAP 19 | 68520.83 |
| % NH Black CVAP 19 | 11.21% |
| NH Asian CVAP 19 | 17670.65 |
| % NH Asian CVAP 19 | 2.89% |
| H CVAP 19 | 45172.72 |
| % H CVAP 19 | 7.39% |

District: 14



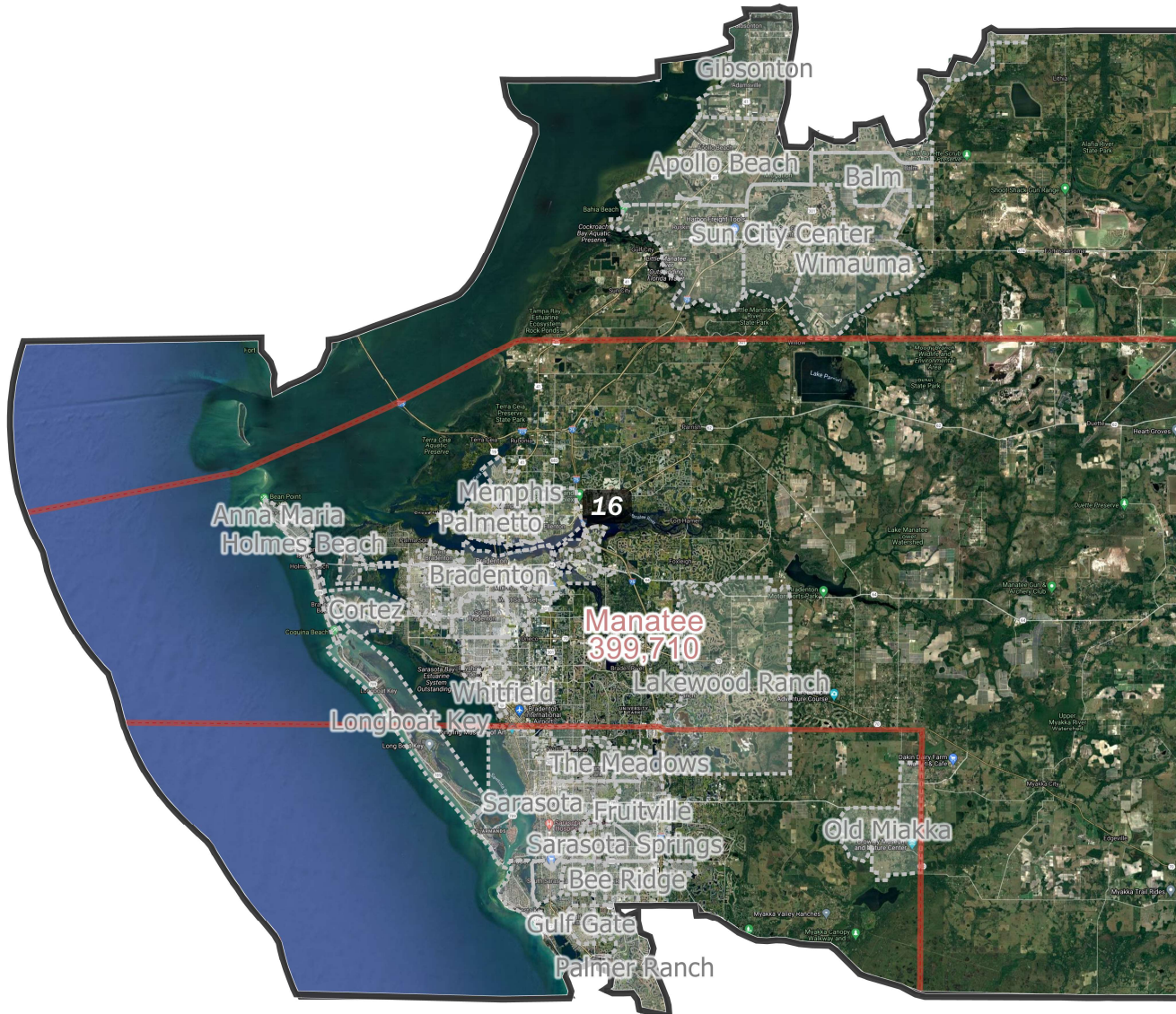
| Field | Value |
|---------------------|-----------|
| District | 14 |
| Population | 769221 |
| Deviation | 0 |
| % Deviation | 0% |
| ernate Schwartzberg | 1.91 |
| Polsby Popper | 0.27 |
| Perimeter | 153.82 |
| Reock | 0.33 |
| 18+_Pop | 625487 |
| 18+_AP_Blk | 56172 |
| % 18+_AP_Blk | 8.98% |
| NH18+_Wht | 368093 |
| % NH18+_Wht | 58.85% |
| H18+_Pop | 163834 |
| % H18+_Pop | 26.19% |
| Total CVAP 19 | 557372.49 |
| NH White CVAP 19 | 368281.73 |
| % NH White CVAP 19 | 66.07% |
| NH Black CVAP 19 | 46979.97 |
| % NH Black CVAP 19 | 8.43% |
| NH Asian CVAP 19 | 19453.05 |
| % NH Asian CVAP 19 | 3.49% |
| H CVAP 19 | 118363.37 |
| % H CVAP 19 | 21.24% |

District: 15



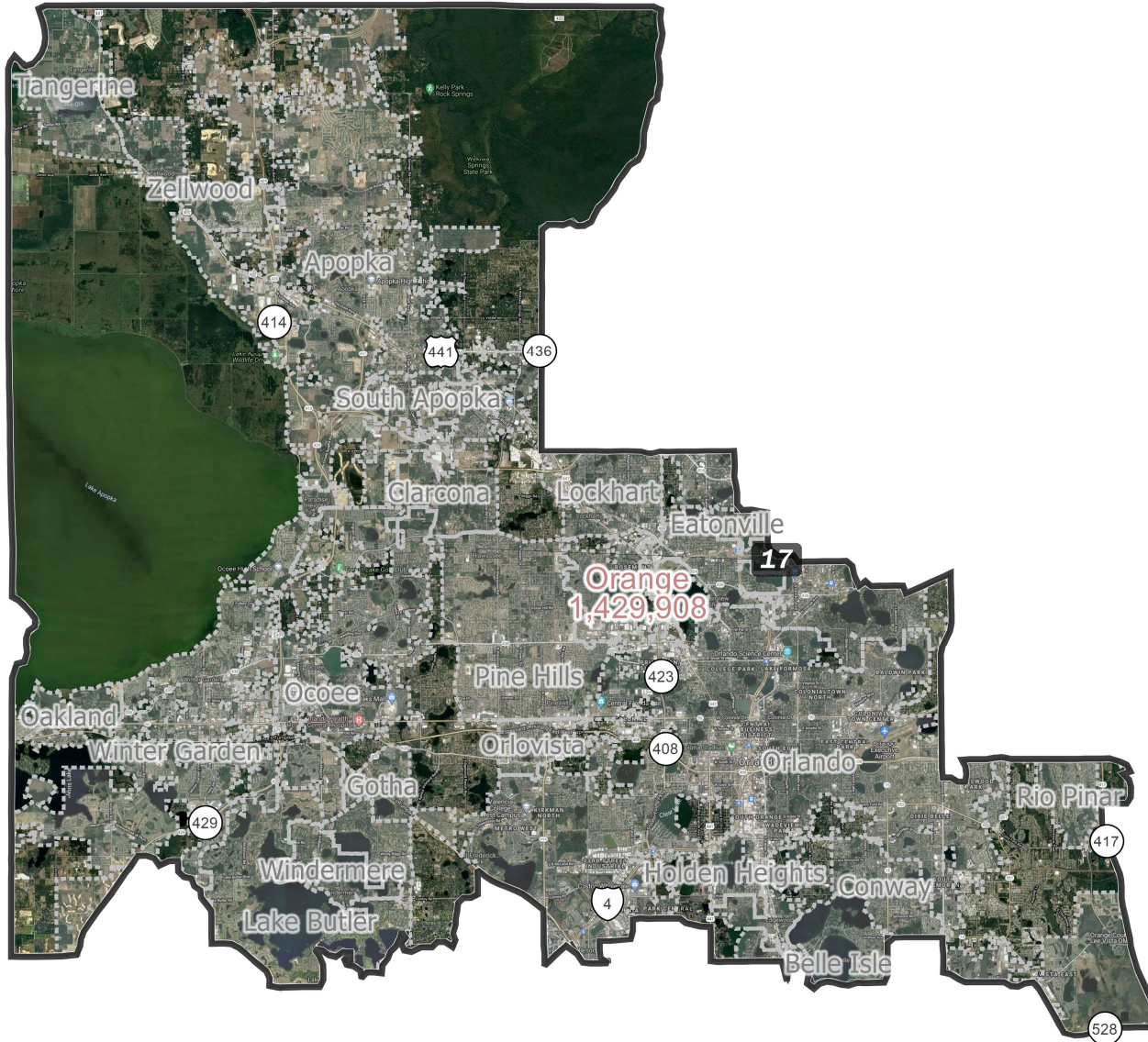
| Field | Value |
|---------------------|-----------|
| District | 15 |
| Population | 769221 |
| Deviation | 0 |
| % Deviation | 0% |
| ernate Schwartzberg | 1.62 |
| Polsby Popper | 0.38 |
| Perimeter | 135.91 |
| Reock | 0.66 |
| 18+_Pop | 585510 |
| 18+_AP_Blk | 133835 |
| % 18+_AP_Blk | 22.86% |
| NH18+_Wht | 273978 |
| % NH18+_Wht | 46.79% |
| H18+_Pop | 139806 |
| % H18+_Pop | 23.88% |
| Total CVAP 19 | 517727.89 |
| NH White CVAP 19 | 278281.58 |
| % NH White CVAP 19 | 53.75% |
| NH Black CVAP 19 | 112882.33 |
| % NH Black CVAP 19 | 21.8% |
| NH Asian CVAP 19 | 17232.38 |
| % NH Asian CVAP 19 | 3.33% |
| H CVAP 19 | 103093.10 |
| % H CVAP 19 | 19.91% |

District: 16



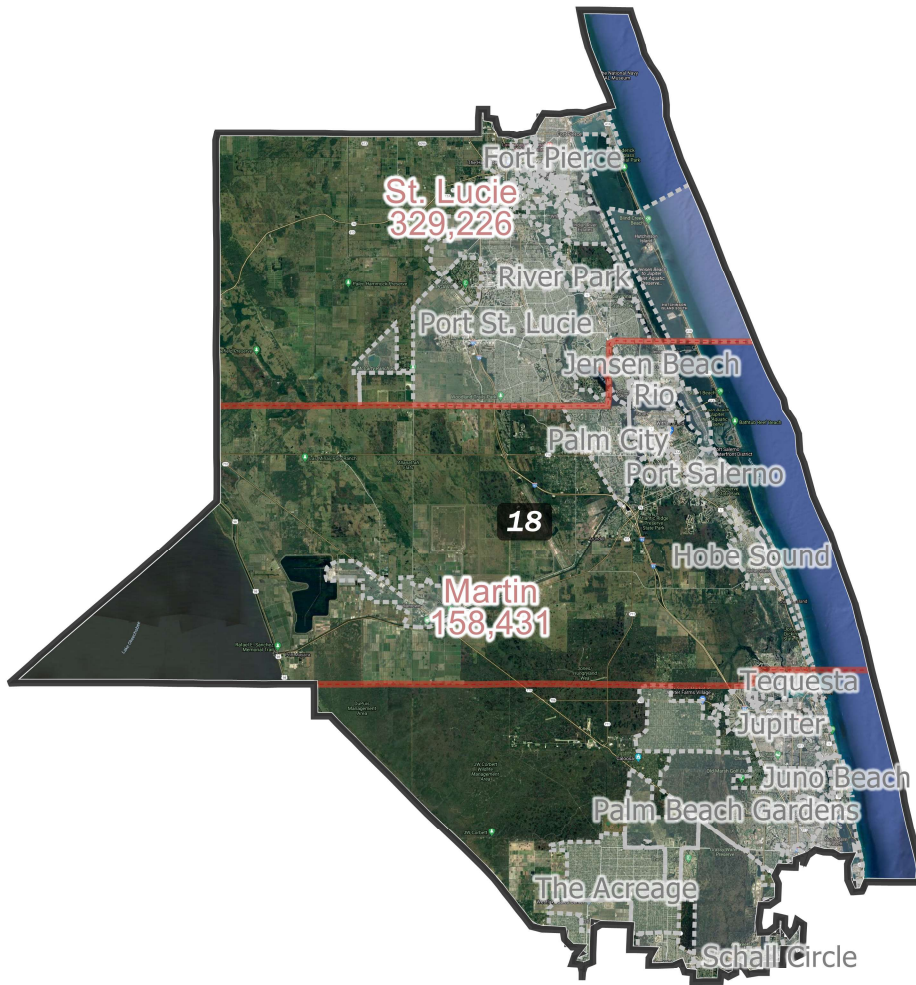
| Field | Value |
|---------------------|-----------|
| District | 16 |
| Population | 769221 |
| Deviation | 0 |
| % Deviation | 0% |
| ernate Schwartzberg | 1.47 |
| Polsby Popper | 0.46 |
| Perimeter | 223.88 |
| Reock | 0.59 |
| 18+_Pop | 631716 |
| 18+_AP_BIK | 52154 |
| % 18+_AP_BIK | 8.26% |
| NH18+_Wht | 455432 |
| % NH18+_Wht | 72.09% |
| H18+_Pop | 96625 |
| % H18+_Pop | 15.3% |
| Total CVAP 19 | 552386.77 |
| NH White CVAP 19 | 442811.66 |
| % NH White CVAP 19 | 80.16% |
| NH Black CVAP 19 | 41226.38 |
| % NH Black CVAP 19 | 7.46% |
| NH Asian CVAP 19 | 9333.81 |
| % NH Asian CVAP 19 | 1.69% |
| H CVAP 19 | 55230.56 |
| % H CVAP 19 | 10% |

District: 17



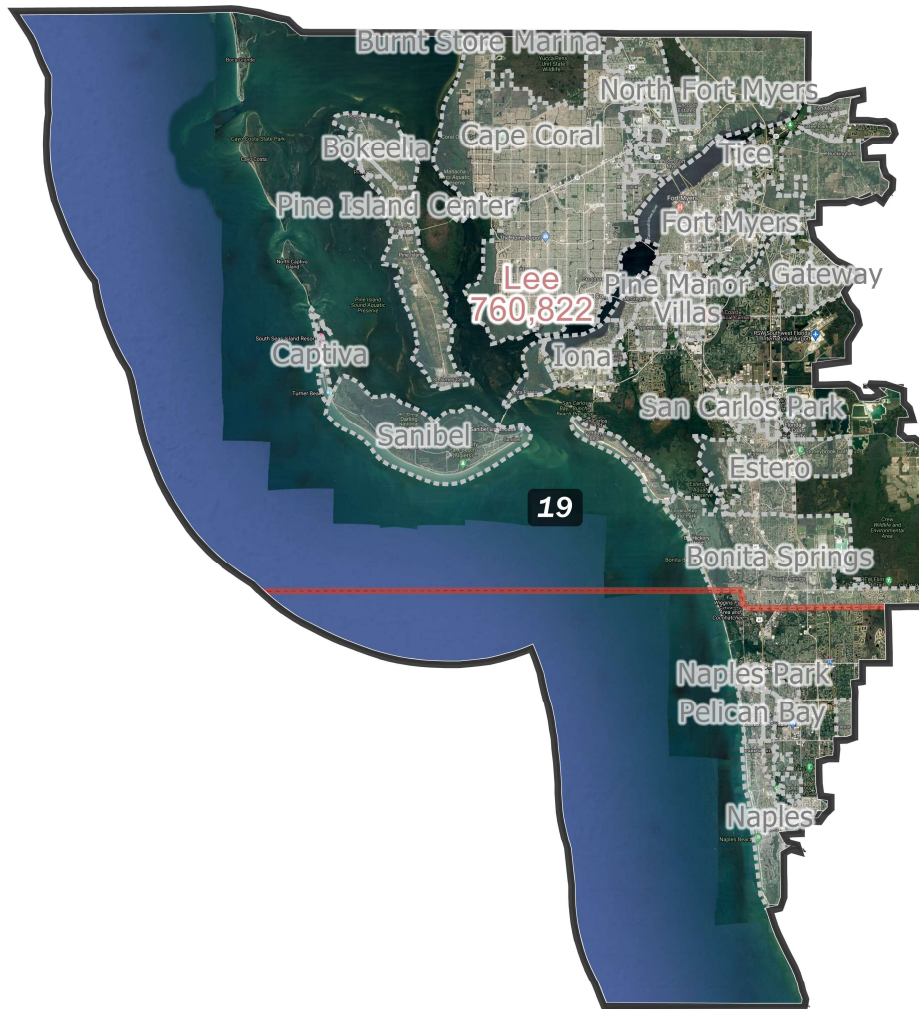
| Field | Value |
|---------------------|-----------|
| District | 17 |
| Population | 769221 |
| Deviation | 0 |
| % Deviation | 0% |
| ernate Schwartzberg | 1.8 |
| Polsby Popper | 0.31 |
| Perimeter | 123.68 |
| Reock | 0.41 |
| 18+_Pop | 600455 |
| 18+_AP_Blk | 165694 |
| % 18+_AP_Blk | 27.59% |
| NH18+_Wht | 236982 |
| % NH18+_Wht | 39.47% |
| H18+_Pop | 159341 |
| % H18+_Pop | 26.54% |
| Total CVAP 19 | 520026.95 |
| NH White CVAP 19 | 236588.83 |
| % NH White CVAP 19 | 45.5% |
| NH Black CVAP 19 | 137012.44 |
| % NH Black CVAP 19 | 26.35% |
| NH Asian CVAP 19 | 20134.27 |
| % NH Asian CVAP 19 | 3.87% |
| H CVAP 19 | 120122.64 |
| % H CVAP 19 | 23.1% |

District: 18



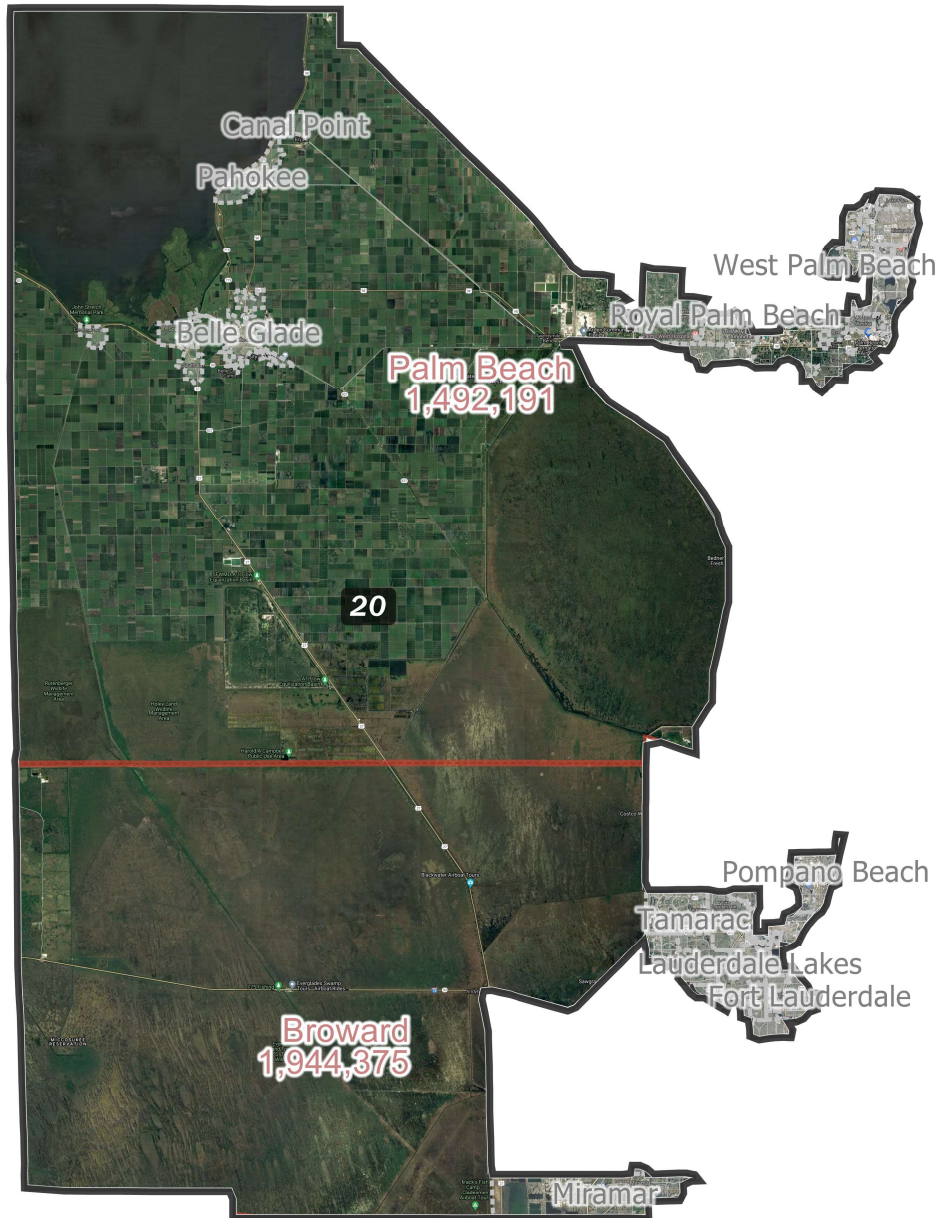
| Field | Value |
|---------------------|-----------|
| District | 18 |
| Population | 769221 |
| Deviation | 0 |
| % Deviation | 0% |
| ernate Schwartzberg | 1.61 |
| Polsby Popper | 0.38 |
| Perimeter | 237.39 |
| Reock | 0.51 |
| 18+_Pop | 628511 |
| 18+_AP_BlK | 78587 |
| % 18+_AP_BlK | 12.5% |
| NH18+_Wht | 423399 |
| % NH18+_Wht | 67.37% |
| H18+_Pop | 99133 |
| % H18+_Pop | 15.77% |
| Total CVAP 19 | 559322.89 |
| NH White CVAP 19 | 417097.83 |
| % NH White CVAP 19 | 74.57% |
| NH Black CVAP 19 | 59108.91 |
| % NH Black CVAP 19 | 10.57% |
| NH Asian CVAP 19 | 11044.64 |
| % NH Asian CVAP 19 | 1.97% |
| H CVAP 19 | 68084.20 |
| % H CVAP 19 | 12.17% |

District: 19



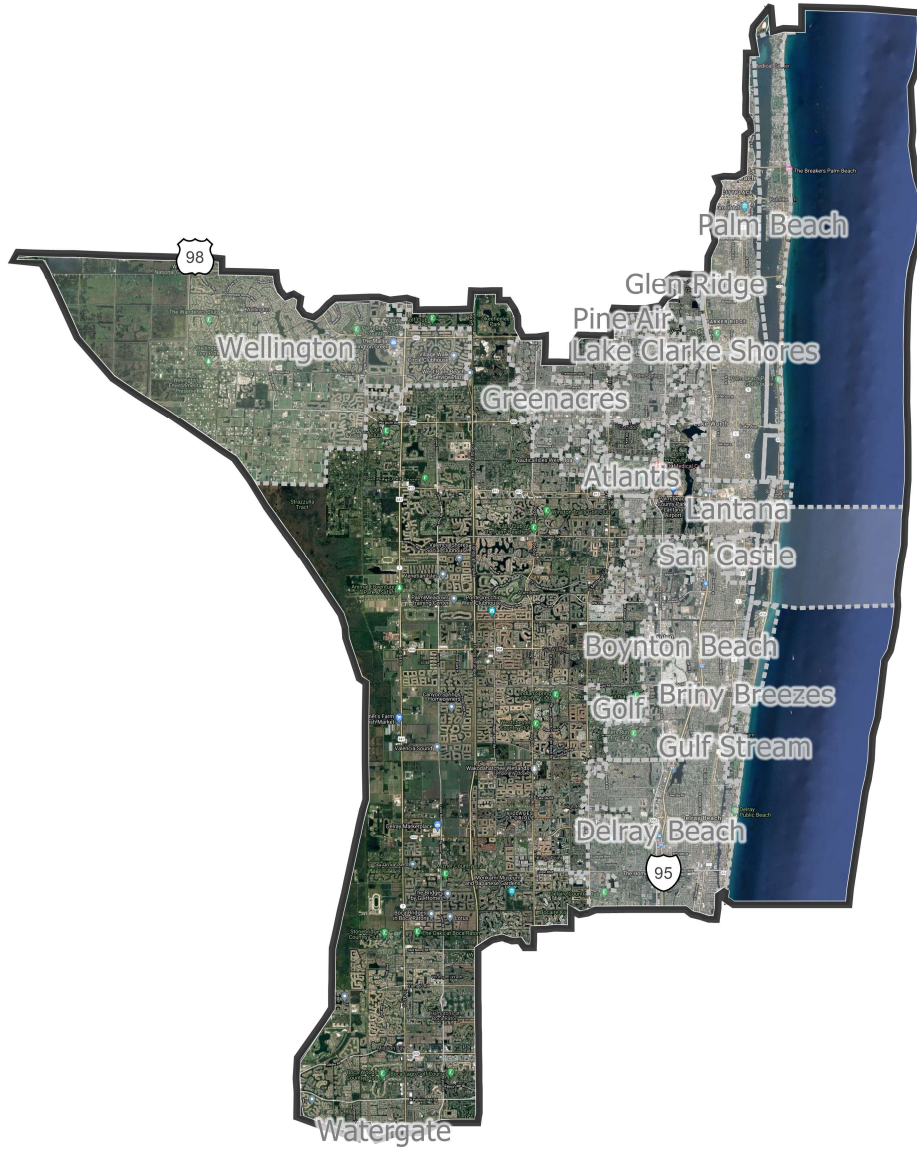
| Field | Value |
|---------------------|-----------|
| District | 19 |
| Population | 769221 |
| Deviation | 0 |
| % Deviation | 0% |
| ernate Schwartzberg | 1.55 |
| Polsby Popper | 0.42 |
| Perimeter | 224.26 |
| Reock | 0.44 |
| 18+_Pop | 653825 |
| 18+_AP_Bl | 33853 |
| % 18+_AP_Bl | 5.18% |
| NH18+_Wht | 496768 |
| % NH18+_Wht | 75.98% |
| H18+_Pop | 98930 |
| % H18+_Pop | 15.13% |
| Total CVAP 19 | 571729.94 |
| NH White CVAP 19 | 473961.67 |
| % NH White CVAP 19 | 82.9% |
| NH Black CVAP 19 | 27534.12 |
| % NH Black CVAP 19 | 4.82% |
| NH Asian CVAP 19 | 9212.35 |
| % NH Asian CVAP 19 | 1.61% |
| H CVAP 19 | 58007.92 |
| % H CVAP 19 | 10.15% |

District: 20



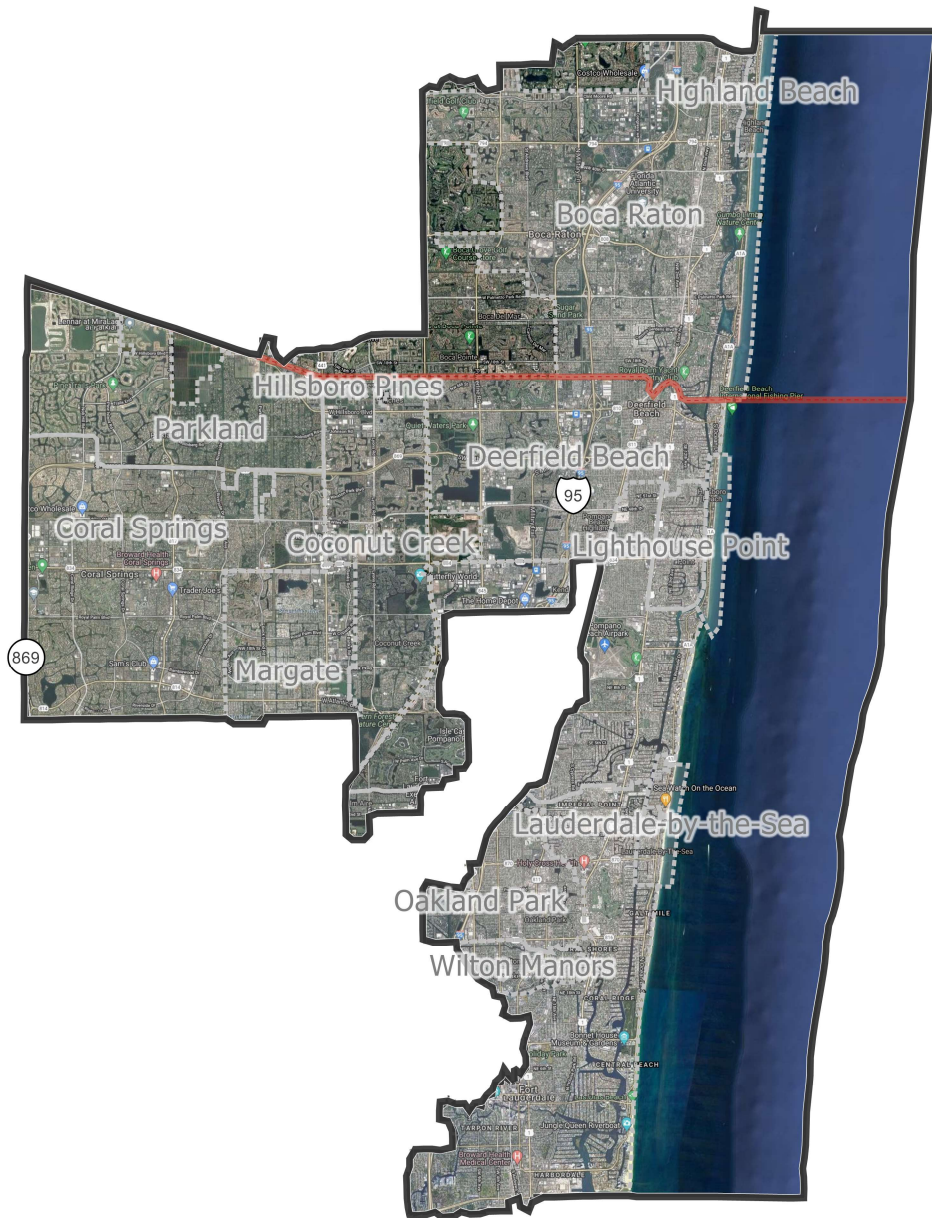
| Field | Value |
|---------------------|-----------|
| District | 20 |
| Population | 769221 |
| Deviation | 0 |
| % Deviation | 0% |
| ernate Schwartzberg | 2.17 |
| Polsby Popper | 0.21 |
| Perimeter | 377.75 |
| Reock | 0.5 |
| 18+_Pop | 587583 |
| 18+_AP_Blak | 303126 |
| % 18+_AP_Blak | 51.59% |
| NH18+_Wht | 109847 |
| % NH18+_Wht | 18.69% |
| H18+_Pop | 156006 |
| % H18+_Pop | 26.55% |
| Total CVAP 19 | 479359.06 |
| NH White CVAP 19 | 118852.99 |
| % NH White CVAP 19 | 24.79% |
| NH Black CVAP 19 | 243527.23 |
| % NH Black CVAP 19 | 50.8% |
| NH Asian CVAP 19 | 13771.13 |
| % NH Asian CVAP 19 | 2.87% |
| H CVAP 19 | 98307.09 |
| % H CVAP 19 | 20.51% |

District: 21



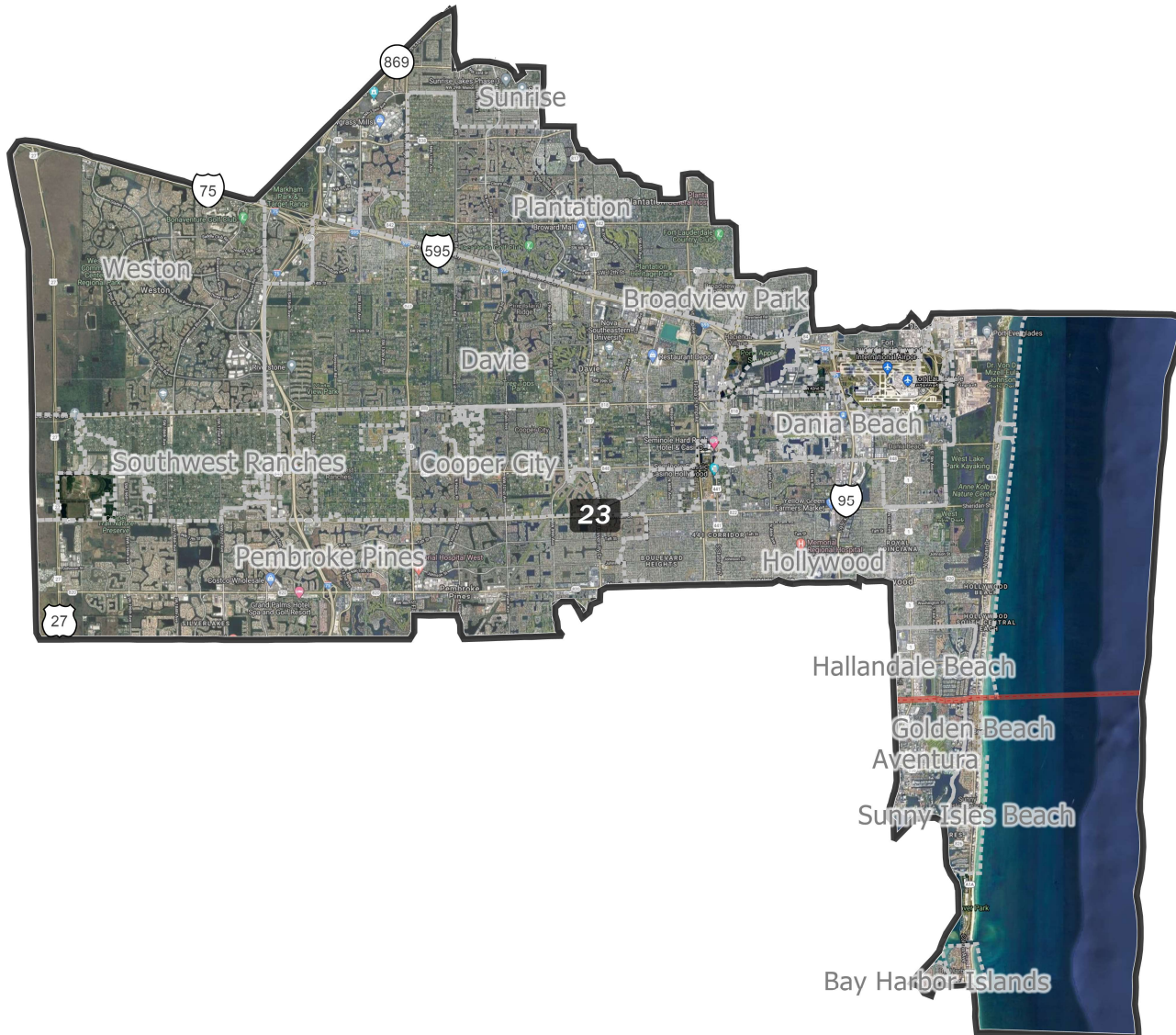
| Field | Value |
|---------------------|-----------|
| District | 21 |
| Population | 769221 |
| Deviation | 0 |
| % Deviation | 0% |
| ernate Schwartzberg | 1.81 |
| Polsby Popper | 0.3 |
| Perimeter | 120.18 |
| Reock | 0.37 |
| 18+_Pop | 628607 |
| 18+_AP_Blk | 94621 |
| % 18+_AP_Blk | 15.05% |
| NH18+_Wht | 360171 |
| % NH18+_Wht | 57.3% |
| H18+_Pop | 144103 |
| % H18+_Pop | 22.92% |
| Total CVAP 19 | 526515.41 |
| NH White CVAP 19 | 352202.03 |
| % NH White CVAP 19 | 66.89% |
| NH Black CVAP 19 | 68060.74 |
| % NH Black CVAP 19 | 12.93% |
| NH Asian CVAP 19 | 13485.39 |
| % NH Asian CVAP 19 | 2.56% |
| H CVAP 19 | 88586.82 |
| % H CVAP 19 | 16.83% |

District: 22



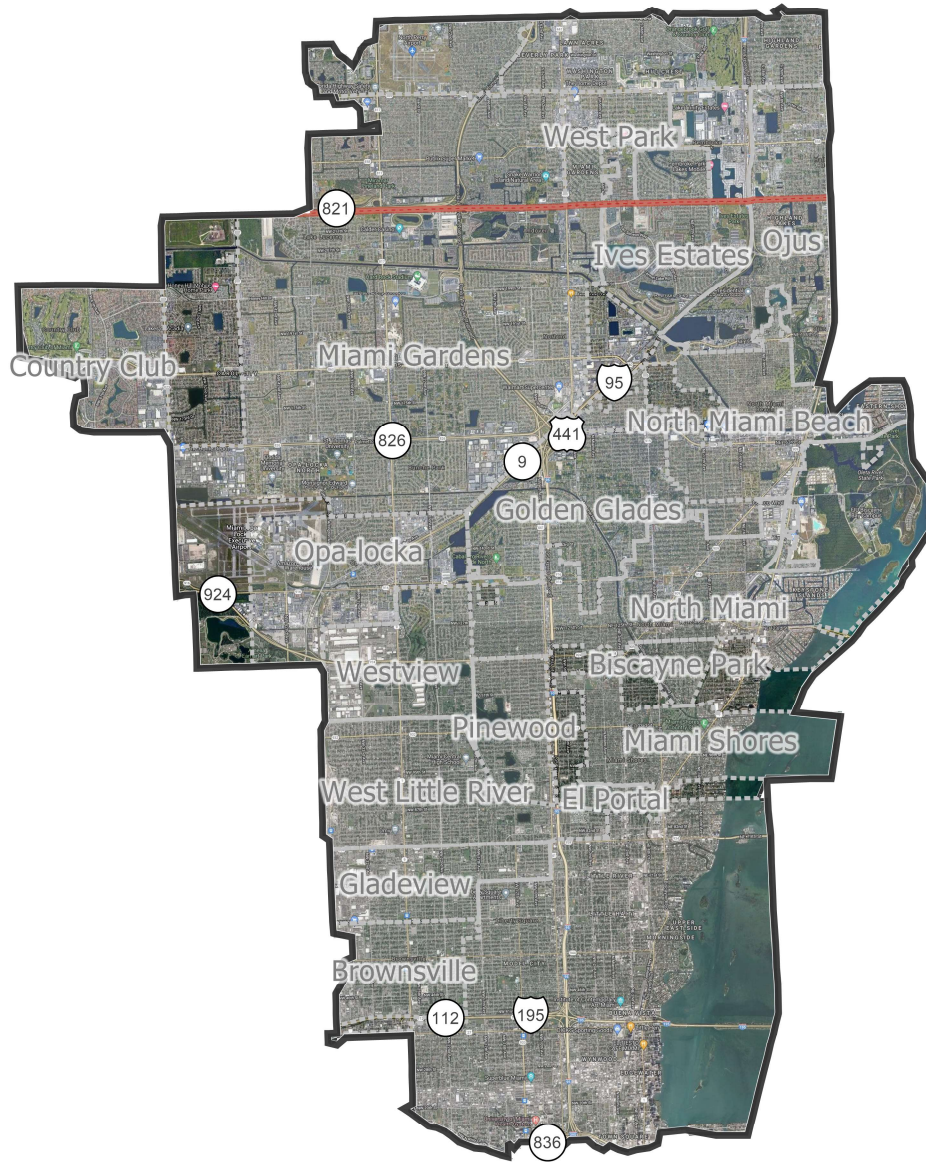
| Field | Value |
|---------------------|-----------|
| District | 22 |
| Population | 769221 |
| Deviation | 0 |
| % Deviation | 0% |
| ernate Schwartzberg | 2 |
| Polsby Popper | 0.25 |
| Perimeter | 112.19 |
| Reock | 0.48 |
| 18+_Pop | 632953 |
| 18+_AP_BlK | 93462 |
| % 18+_AP_BlK | 14.77% |
| NH18+_Wht | 359979 |
| % NH18+_Wht | 56.87% |
| H18+_Pop | 131004 |
| % H18+_Pop | 20.7% |
| Total CVAP 19 | 522037.44 |
| NH White CVAP 19 | 347435.09 |
| % NH White CVAP 19 | 66.55% |
| NH Black CVAP 19 | 69019.02 |
| % NH Black CVAP 19 | 13.22% |
| NH Asian CVAP 19 | 14758.67 |
| % NH Asian CVAP 19 | 2.83% |
| H CVAP 19 | 87057.21 |
| % H CVAP 19 | 16.68% |

District: 23



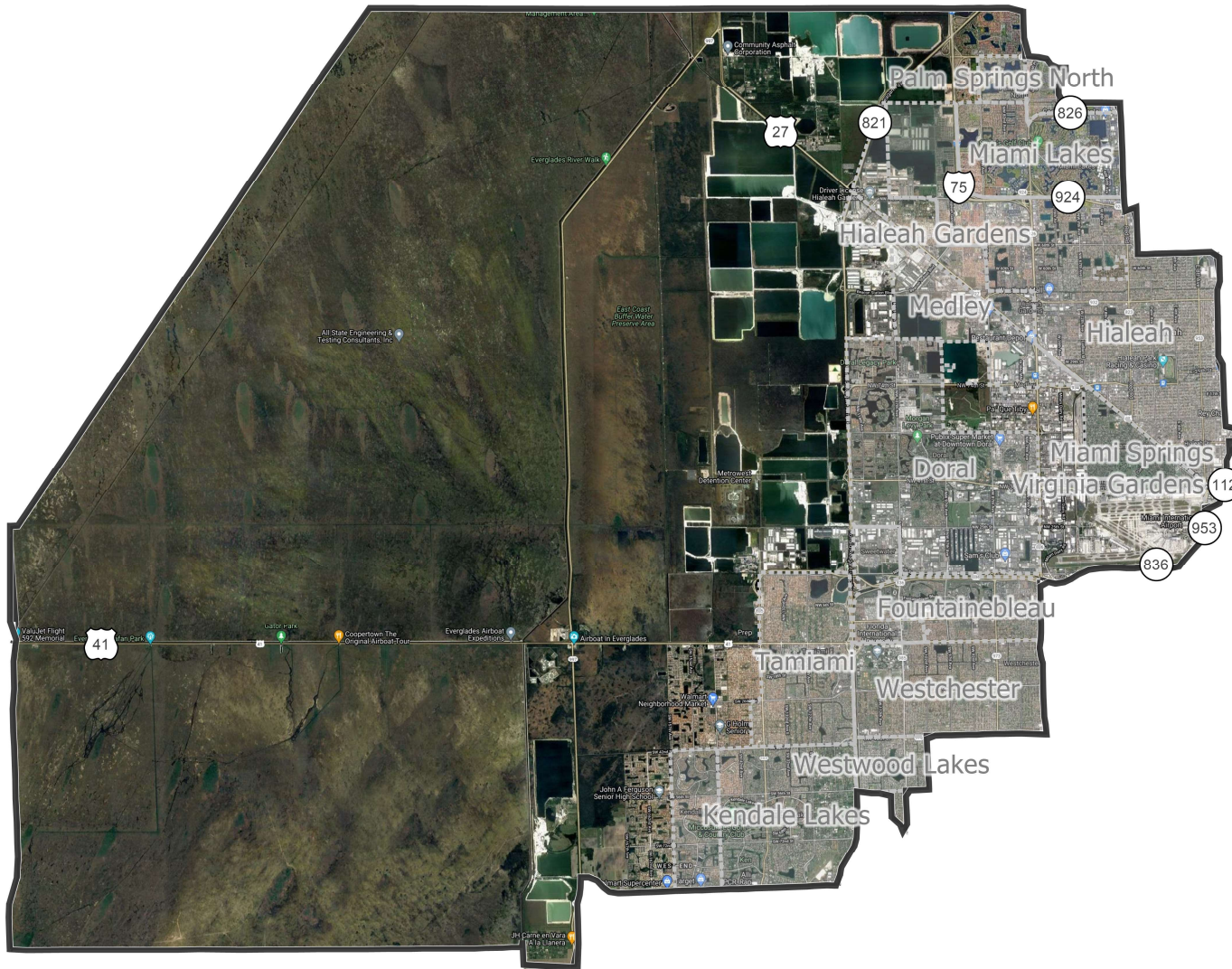
| Field | Value |
|---------------------|-----------|
| District | 23 |
| Population | 769221 |
| Deviation | 0 |
| % Deviation | 0% |
| ernate Schwartzberg | 1.83 |
| Polsby Popper | 0.3 |
| Perimeter | 102.63 |
| Reock | 0.35 |
| 18+_Pop | 613427 |
| 18+_AP_Blk | 84788 |
| % 18+_AP_Blk | 13.82% |
| NH18+_Wht | 244034 |
| % NH18+_Wht | 39.78% |
| H18+_Pop | 248197 |
| % H18+_Pop | 40.46% |
| Total CVAP 19 | 508754.07 |
| NH White CVAP 19 | 242157.70 |
| % NH White CVAP 19 | 47.6% |
| NH Black CVAP 19 | 61803.31 |
| % NH Black CVAP 19 | 12.15% |
| NH Asian CVAP 19 | 20330.76 |
| % NH Asian CVAP 19 | 4% |
| H CVAP 19 | 180198.79 |
| % H CVAP 19 | 35.42% |

District: 24



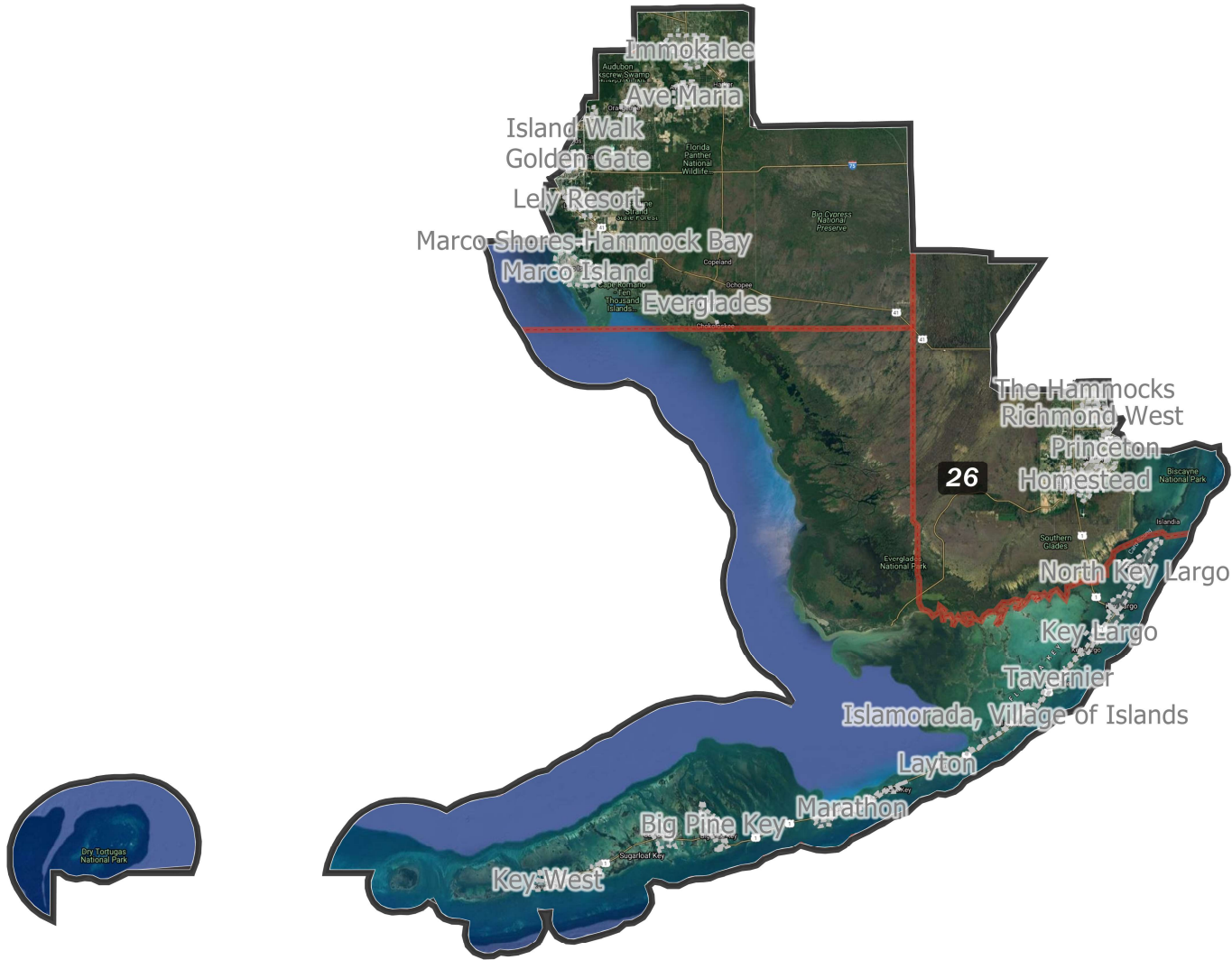
| Field | Value |
|---------------------|-----------|
| District | 24 |
| Population | 769221 |
| Deviation | 0 |
| % Deviation | 0% |
| ernate Schwartzberg | 1.62 |
| Polsby Popper | 0.38 |
| Perimeter | 62.9 |
| Reock | 0.56 |
| 18+_Pop | 606799 |
| 18+_AP_BlK | 276482 |
| % 18+_AP_BlK | 45.56% |
| NH18+_Wht | 63656 |
| % NH18+_Wht | 10.49% |
| H18+_Pop | 269047 |
| % H18+_Pop | 44.34% |
| Total CVAP 19 | 471921.51 |
| NH White CVAP 19 | 57453.97 |
| % NH White CVAP 19 | 12.17% |
| NH Black CVAP 19 | 242326.81 |
| % NH Black CVAP 19 | 51.35% |
| NH Asian CVAP 19 | 6131.10 |
| % NH Asian CVAP 19 | 1.3% |
| H CVAP 19 | 163333.38 |
| % H CVAP 19 | 34.61% |

District: 25



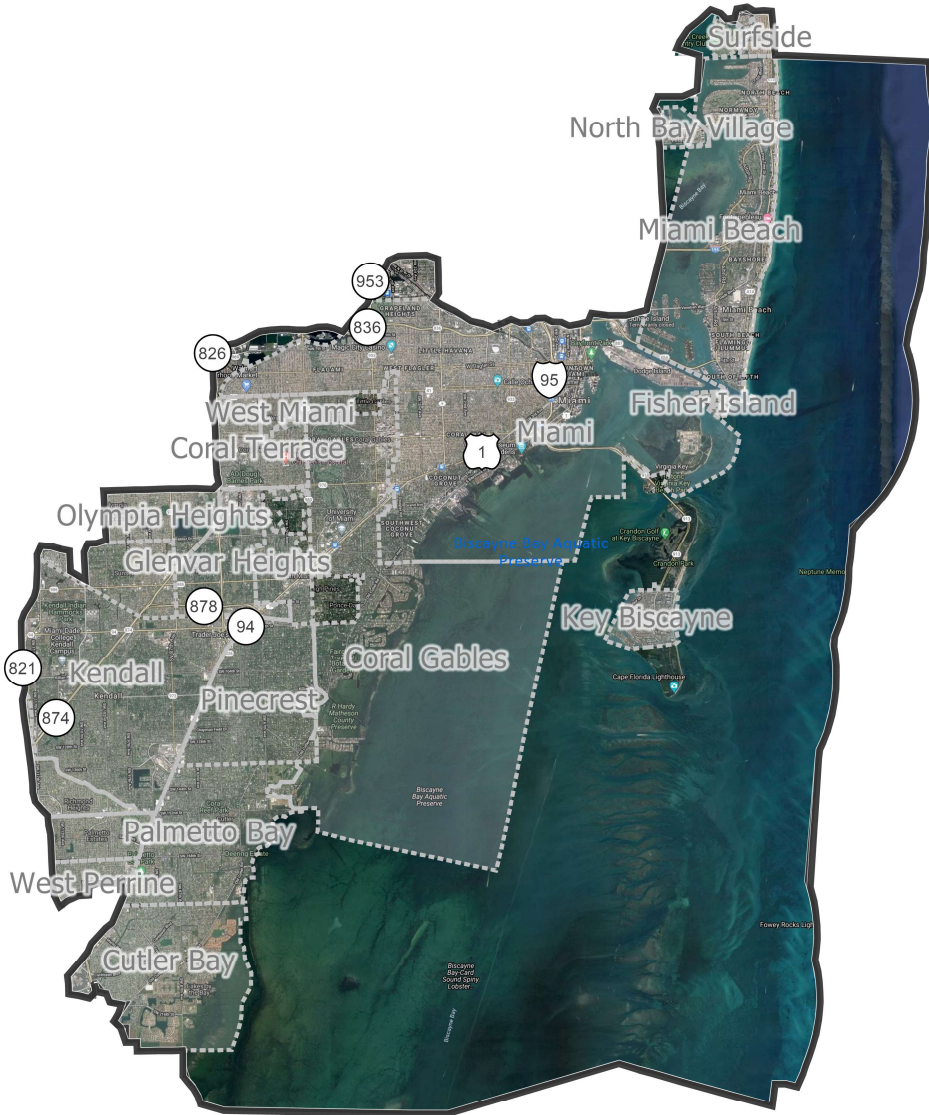
| Field | Value |
|---------------------|-----------|
| District | 25 |
| Population | 769221 |
| Deviation | 0 |
| % Deviation | 0% |
| ernate Schwartzberg | 1.28 |
| Polsby Popper | 0.61 |
| Perimeter | 91.76 |
| Reock | 0.58 |
| 18+_Pop | 631215 |
| 18+_AP_BIK | 20918 |
| % 18+_AP_BIK | 3.31% |
| NH18+_Wht | 33288 |
| % NH18+_Wht | 5.27% |
| H18+_Pop | 575128 |
| % H18+_Pop | 91.11% |
| Total CVAP 19 | 451328.85 |
| NH White CVAP 19 | 30232.04 |
| % NH White CVAP 19 | 6.7% |
| NH Black CVAP 19 | 9244.79 |
| % NH Black CVAP 19 | 2.05% |
| NH Asian CVAP 19 | 5124.41 |
| % NH Asian CVAP 19 | 1.14% |
| H CVAP 19 | 405847.18 |
| % H CVAP 19 | 89.92% |

District: 26



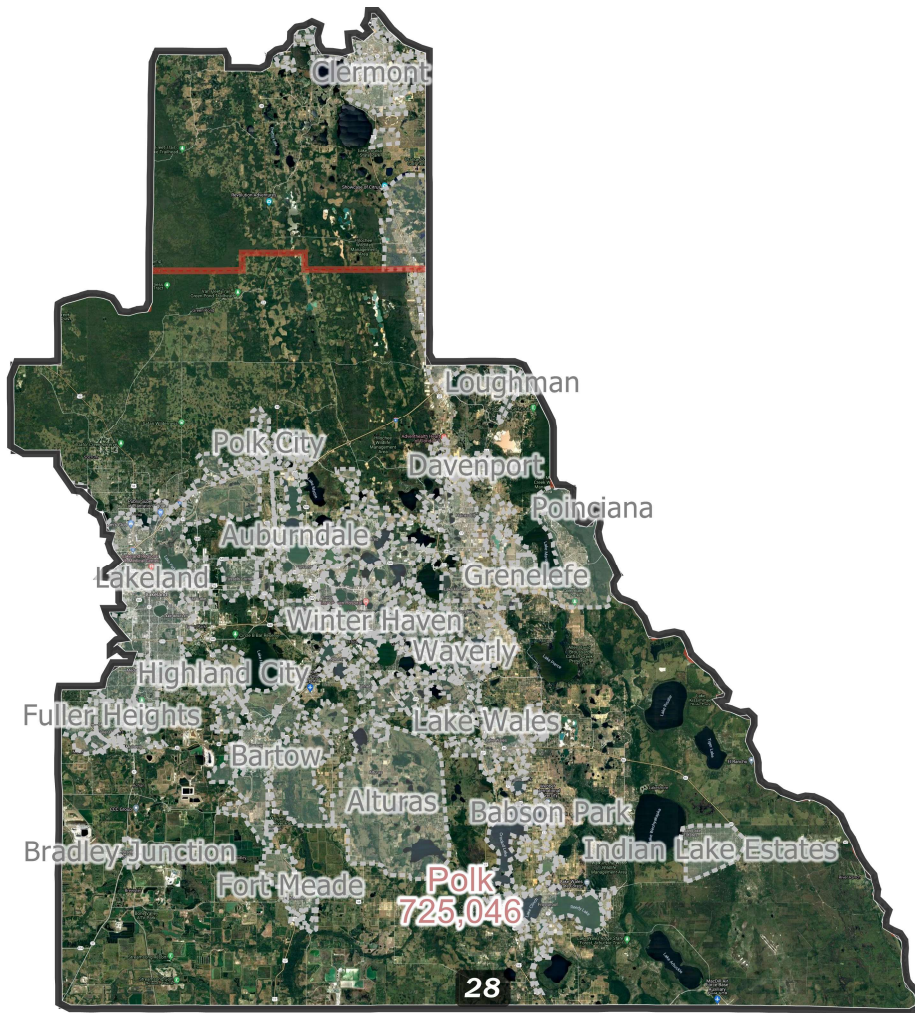
| Field | Value |
|---------------------|-----------|
| District | 26 |
| Population | 769221 |
| Deviation | 0 |
| % Deviation | 0% |
| ernate Schwartzberg | 2.12 |
| Polsby Popper | 0.22 |
| Perimeter | 716.21 |
| Reock | 0.29 |
| 18+_Pop | 604980 |
| 18+_AP_BIK | 73547 |
| % 18+_AP_BIK | 12.16% |
| NH18+_Wht | 197091 |
| % NH18+_Wht | 32.58% |
| H18+_Pop | 324261 |
| % H18+_Pop | 53.6% |
| Total CVAP 19 | 453291.57 |
| NH White CVAP 19 | 188513.35 |
| % NH White CVAP 19 | 41.59% |
| NH Black CVAP 19 | 54730.61 |
| % NH Black CVAP 19 | 12.07% |
| NH Asian CVAP 19 | 7524.07 |
| % NH Asian CVAP 19 | 1.66% |
| H CVAP 19 | 200337.52 |
| % H CVAP 19 | 44.2% |

District: 27



| Field | Value |
|---------------------|-----------|
| District | 27 |
| Population | 769221 |
| Deviation | 0 |
| % Deviation | 0% |
| ernate Schwartzberg | 1.53 |
| Polsby Popper | 0.43 |
| Perimeter | 97.72 |
| Reock | 0.51 |
| 18+_Pop | 638744 |
| 18+_AP_Blk | 45849 |
| % 18+_AP_Blk | 7.18% |
| NH18+_Wht | 136468 |
| % NH18+_Wht | 21.37% |
| H18+_Pop | 441479 |
| % H18+_Pop | 69.12% |
| Total CVAP 19 | 464865.55 |
| NH White CVAP 19 | 115167.54 |
| % NH White CVAP 19 | 24.77% |
| NH Black CVAP 19 | 31706.15 |
| % NH Black CVAP 19 | 6.82% |
| NH Asian CVAP 19 | 9072.38 |
| % NH Asian CVAP 19 | 1.95% |
| H CVAP 19 | 307300.52 |
| % H CVAP 19 | 66.11% |

District: 28



| Field | Value |
|---------------------|-----------|
| District | 28 |
| Population | 769221 |
| Deviation | 0 |
| % Deviation | 0% |
| ernate Schwartzberg | 1.73 |
| Polsby Popper | 0.33 |
| Perimeter | 288.09 |
| Reock | 0.43 |
| 18+_Pop | 602442 |
| 18+_AP_BlK | 88659 |
| % 18+_AP_BlK | 14.72% |
| NH18+_Wht | 354163 |
| % NH18+_Wht | 58.79% |
| H18+_Pop | 136113 |
| % H18+_Pop | 22.59% |
| Total CVAP 19 | 525802.76 |
| NH White CVAP 19 | 350400.18 |
| % NH White CVAP 19 | 66.64% |
| NH Black CVAP 19 | 71998.82 |
| % NH Black CVAP 19 | 13.69% |
| NH Asian CVAP 19 | 10230.14 |
| % NH Asian CVAP 19 | 1.95% |
| H CVAP 19 | 88465.05 |
| % H CVAP 19 | 16.82% |