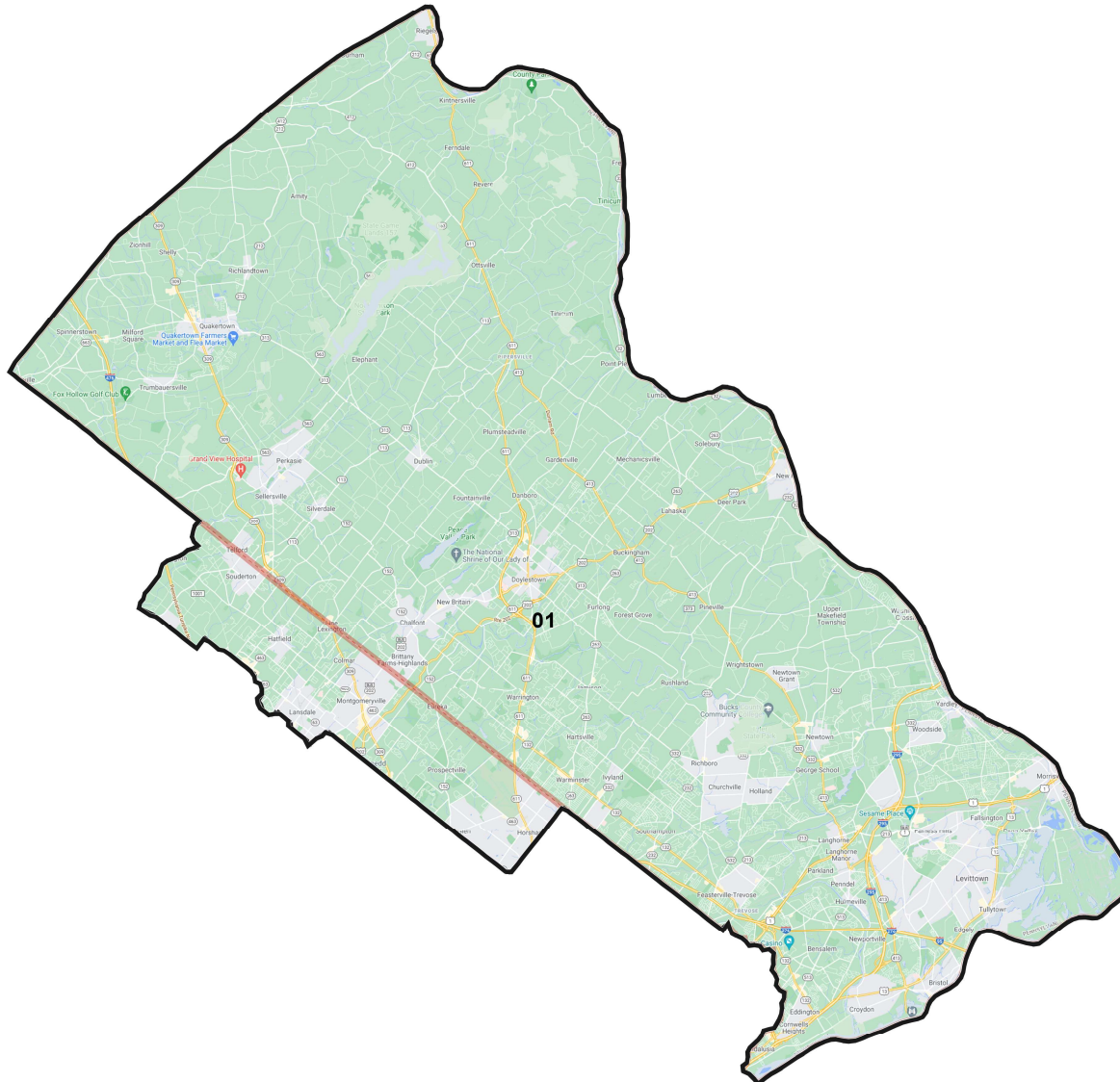
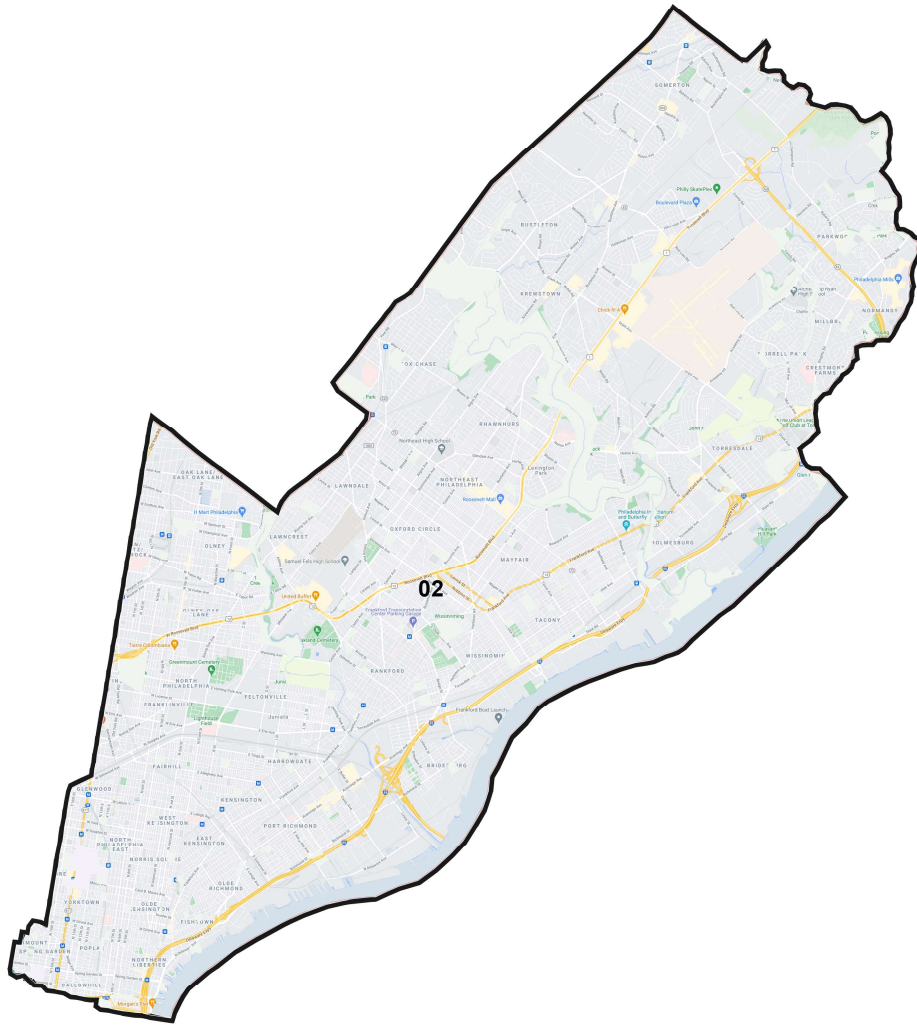


# District: 01



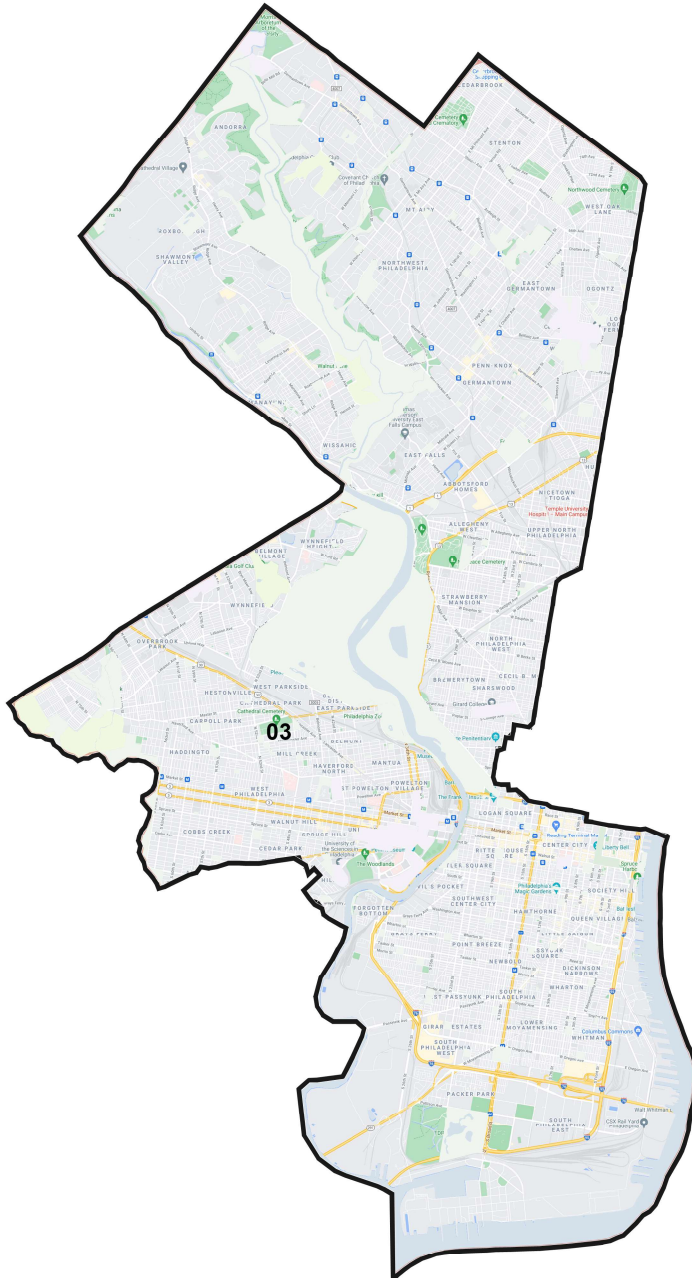
Field	Value
ID	1
District	01
Population	764865
% Deviation	0%
ernate Schwartzberg	1.49
Polsby Popper	0.45
% NH_Wht	79.14%
% AP_BlK	5.46%
% AP_Ind	1.2%
% AP_Asn	7.73%
% AP_Hwn	0.1%
% AP_Oth	5.76%
% Hispanic Origin	6.18%
% NH18+_Wht	81.58%
% 18+_AP_BlK	4.69%
% 18+_AP_Ind	1.09%
% 18+_AP_Asn	7.13%
% 18+_AP_Hwn	0.09%
% 18+_AP_Oth	4.96%
% H18+_Pop	5.09%

# District: 02



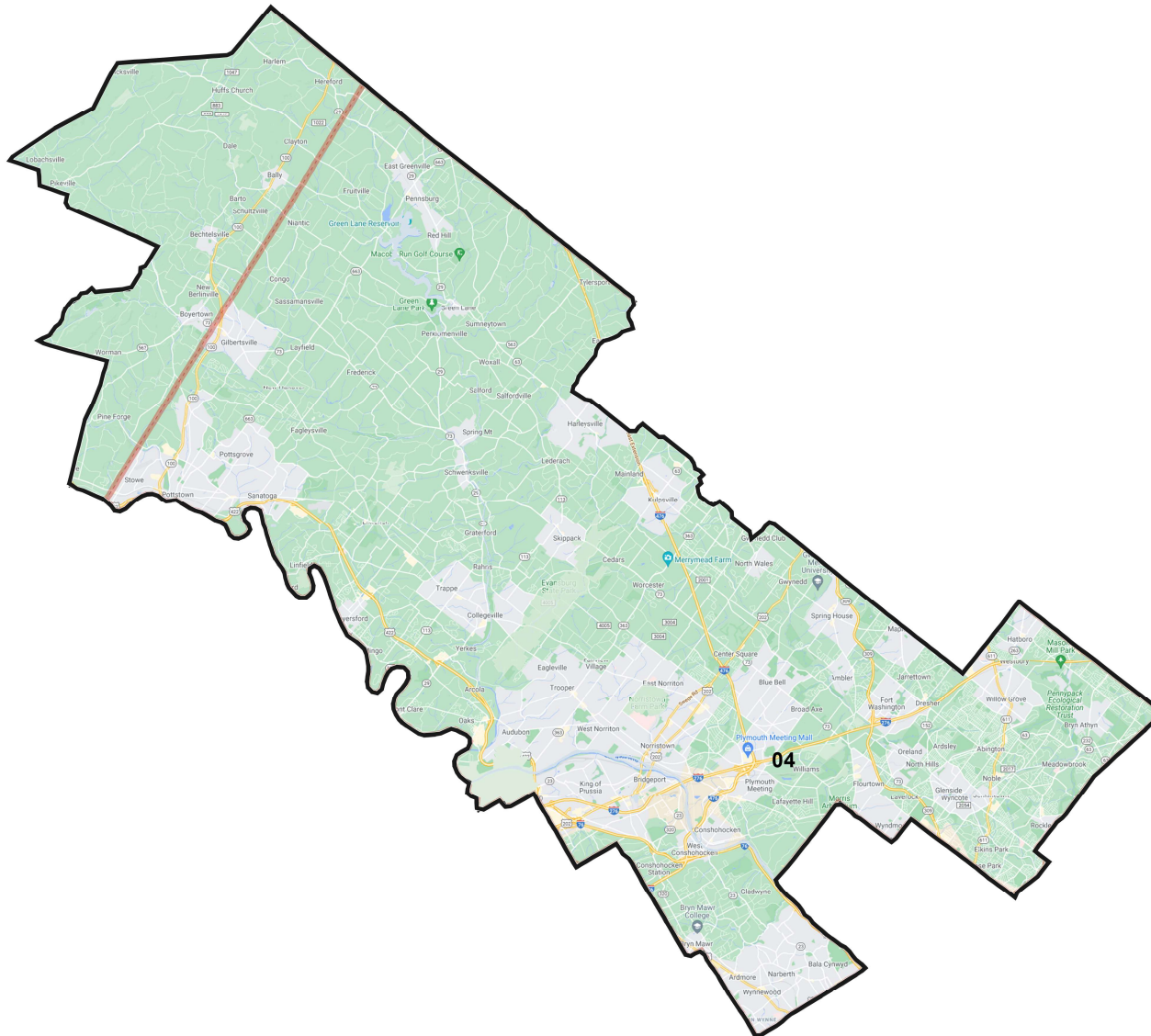
Field	Value
ID	11
District	02
Population	764865
% Deviation	0%
ernate Schwartzberg	1.48
Polsby Popper	0.46
% NH_Wht	36.87%
% AP_BlK	29.06%
% AP_Ind	1.5%
% AP_Asn	10.31%
% AP_Hwn	0.25%
% AP_Oth	21.12%
% Hispanic Origin	24.73%
% NH18+_Wht	40.72%
% 18+_AP_BlK	27.03%
% 18+_AP_Ind	1.44%
% 18+_AP_Asn	10.31%
% 18+_AP_Hwn	0.24%
% 18+_AP_Oth	19.4%
% H18+_Pop	22.25%

# District: 03



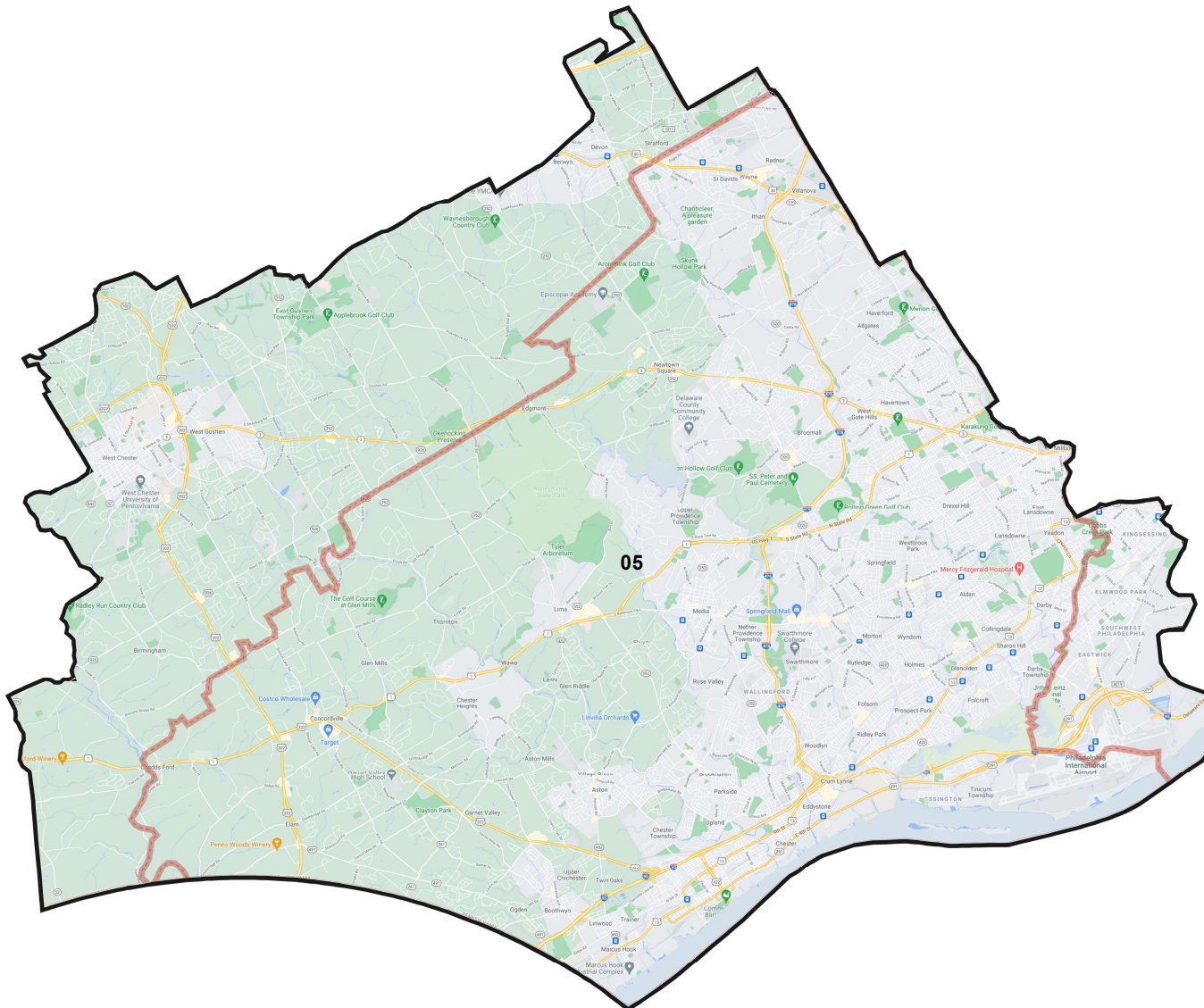
Field	Value
ID	12
District	03
Population	764864
% Deviation	-0%
ernate Schwartzberg	1.75
Polsby Popper	0.33
% NH_Wht	34.39%
% AP_BlK	51.02%
% AP_Ind	1.42%
% AP_Asn	8.71%
% AP_Hwn	0.16%
% AP_Oth	5.11%
% Hispanic Origin	6.02%
% NH18+_Wht	37.52%
% 18+_AP_BlK	48.11%
% 18+_AP_Ind	1.34%
% 18+_AP_Asn	8.81%
% 18+_AP_Hwn	0.14%
% 18+_AP_Oth	4.67%
% H18+_Pop	5.36%

# District: 04



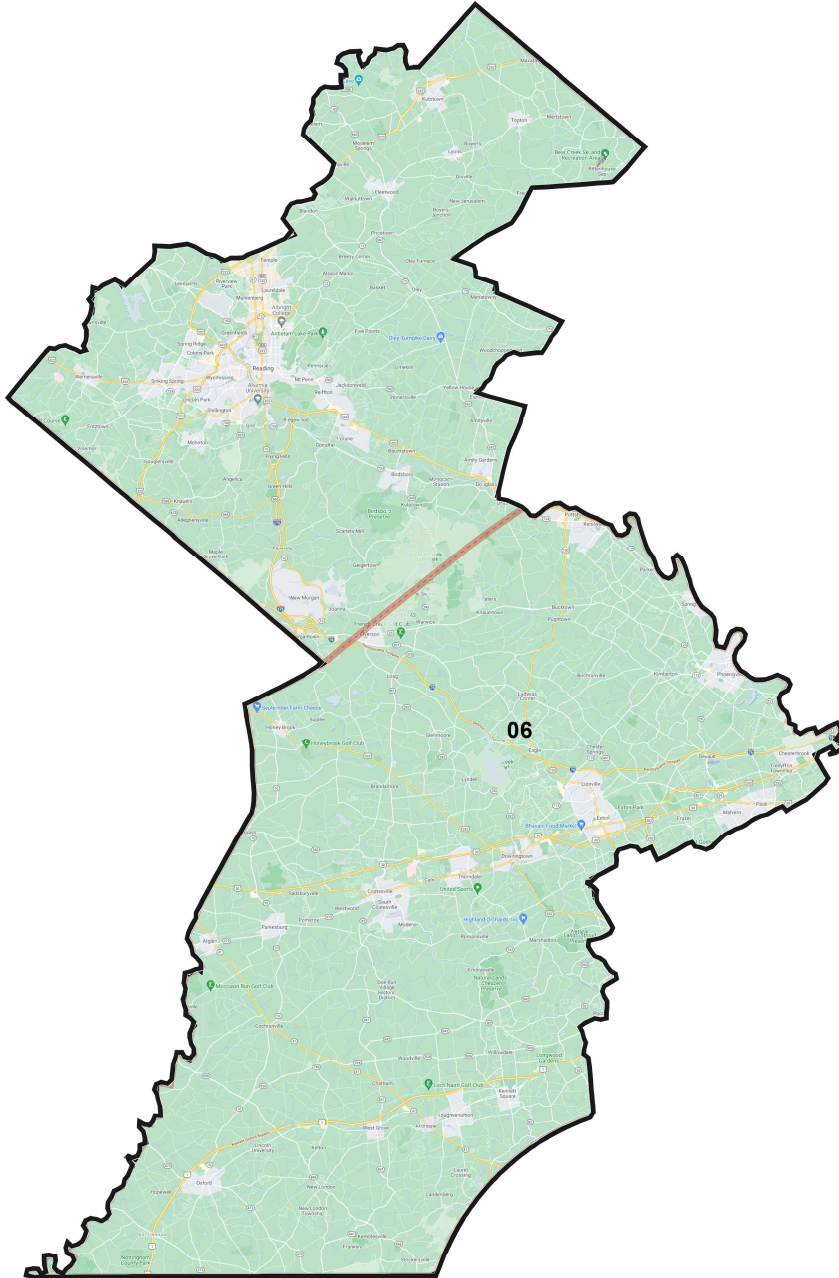
Field	Value
ID	13
District	04
Population	764866
% Deviation	0%
ernate Schwartzberg	1.9
Polsby Popper	0.28
% NH_Wht	73.09%
% AP_BlK	11.68%
% AP_Ind	1.21%
% AP_Asn	7.89%
% AP_Hwn	0.1%
% AP_Oth	5.9%
% Hispanic Origin	6.23%
% NH18+_Wht	75.66%
% 18+_AP_BlK	10.74%
% 18+_AP_Ind	1.09%
% 18+_AP_Asn	7.26%
% 18+_AP_Hwn	0.09%
% 18+_AP_Oth	5.06%
% H18+_Pop	5.16%

# District: 05



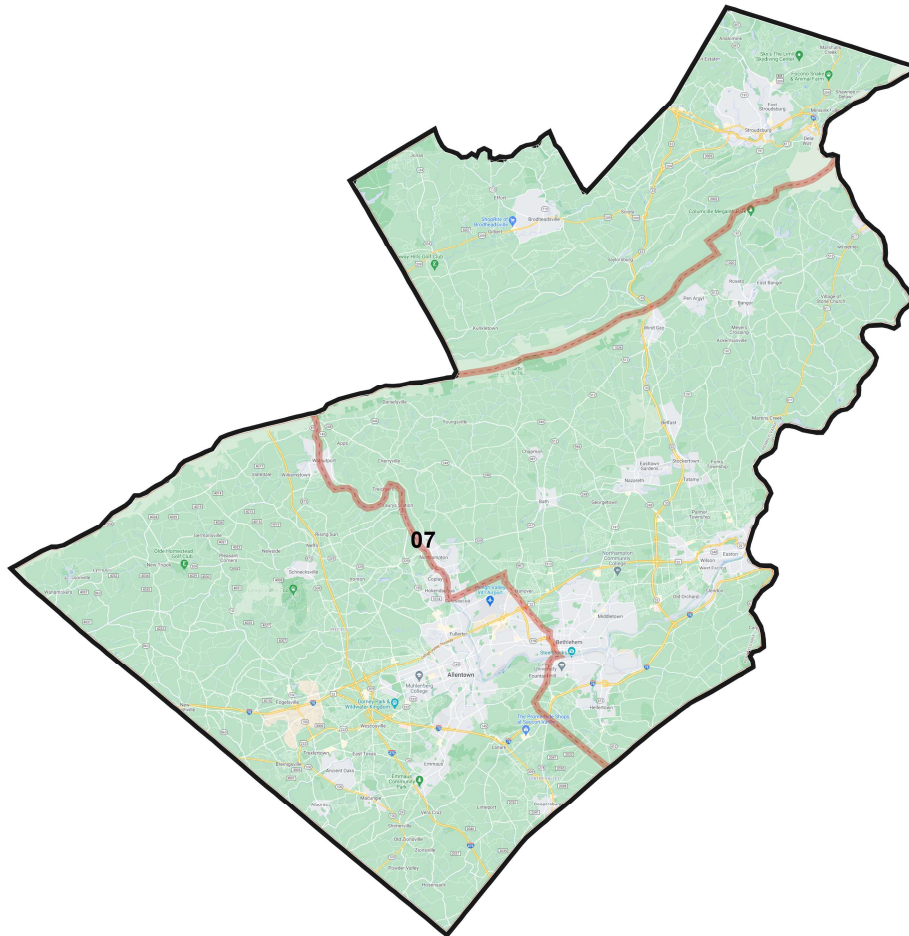
Field	Value
ID	14
District	05
Population	764864
% Deviation	-0%
ernate Schwartzberg	1.47
Polsby Popper	0.46
% NH_Wht	60.19%
% AP_BlK	27.16%
% AP_Ind	1.16%
% AP_Asn	7.21%
% AP_Hwn	0.11%
% AP_Oth	4.5%
% Hispanic Origin	4.7%
% NH18+_Wht	63.43%
% 18+_AP_BlK	25.05%
% 18+_AP_Ind	1.04%
% 18+_AP_Asn	6.64%
% 18+_AP_Hwn	0.1%
% 18+_AP_Oth	3.98%
% H18+_Pop	4.02%

# District: 06



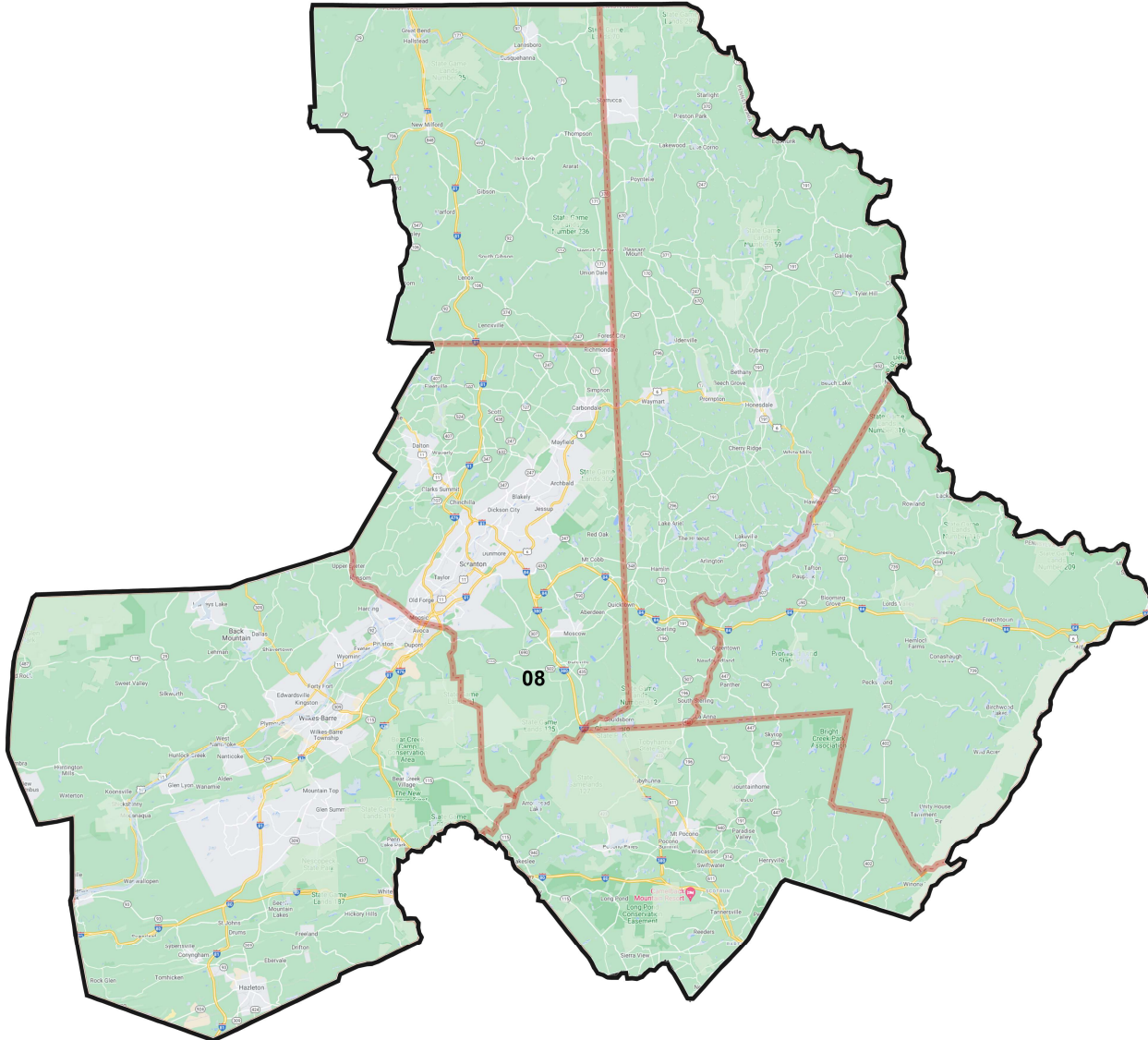
Field	Value
ID	15
District	06
Population	764867
% Deviation	0%
ernate Schwartzberg	2.14
Polsby Popper	0.22
% NH_Wht	69.22%
% AP_BlK	7.96%
% AP_Ind	1.72%
% AP_Asn	5.14%
% AP_Hwn	0.16%
% AP_Oth	14.23%
% Hispanic Origin	17.36%
% NH18+_Wht	72.85%
% 18+_AP_BlK	7.19%
% 18+_AP_Ind	1.55%
% 18+_AP_Asn	4.54%
% 18+_AP_Hwn	0.14%
% 18+_AP_Oth	12.54%
% H18+_Pop	14.79%

# District: 07



Field	Value
ID	16
District	07
Population	764865
% Deviation	0%
ernate Schwartzberg	1.53
Polsby Popper	0.43
% NH_Wht	66.42%
% AP_BlK	9.8%
% AP_Ind	1.57%
% AP_Asn	4.14%
% AP_Hwn	0.14%
% AP_Oth	15.84%
% Hispanic Origin	20.05%
% NH18+_Wht	70.58%
% 18+_AP_BlK	8.39%
% 18+_AP_Ind	1.43%
% 18+_AP_Asn	3.83%
% 18+_AP_Hwn	0.13%
% 18+_AP_Oth	14.02%
% H18+_Pop	17.05%

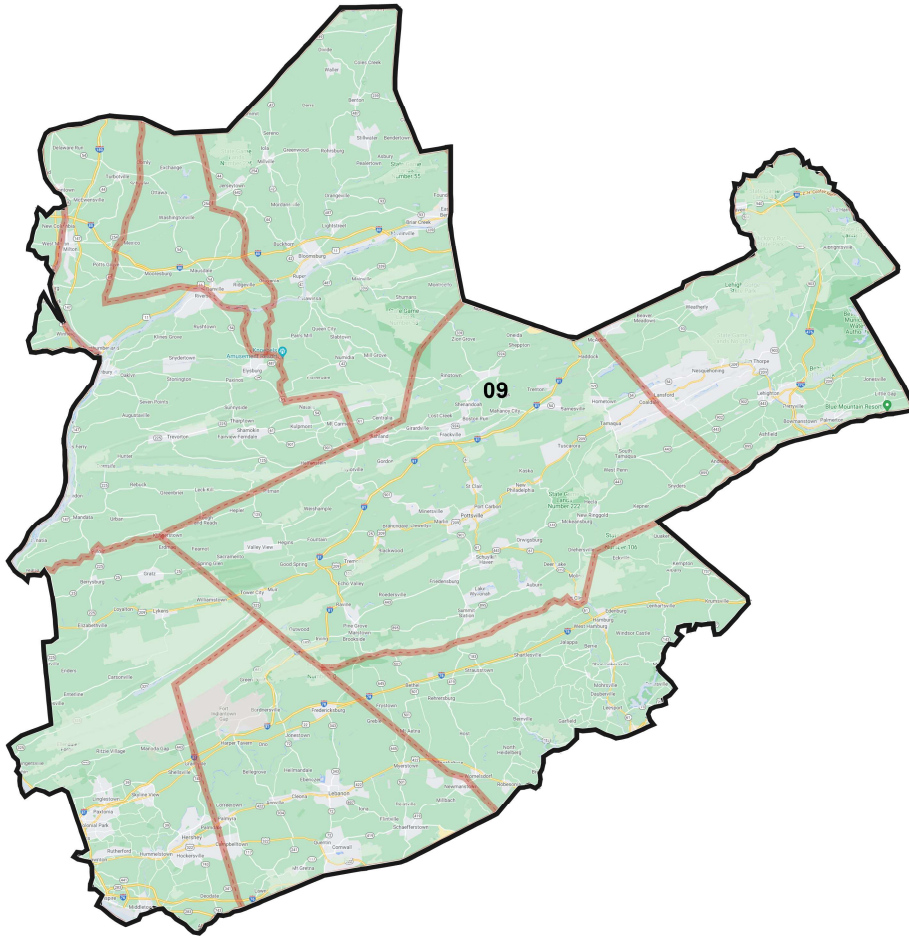
# District: 08



Field	Value
ID	17
District	08
Population	764865
% Deviation	0%
ernate Schwartzberg	1.68
Polsby Popper	0.35
% NH_Wht	77.13%
% AP_BlK	7.78%
% AP_Ind	1.56%
% AP_Asn	2.39%
% AP_Hwn	0.14%
% AP_Oth	9.97%
% Hispanic Origin	11.96%
% NH18+_Wht	80.5%
% 18+_AP_BlK	6.51%
% 18+_AP_Ind	1.38%
% 18+_AP_Asn	2.21%
% 18+_AP_Hwn	0.11%
% 18+_AP_Oth	8.52%
% H18+_Pop	9.83%

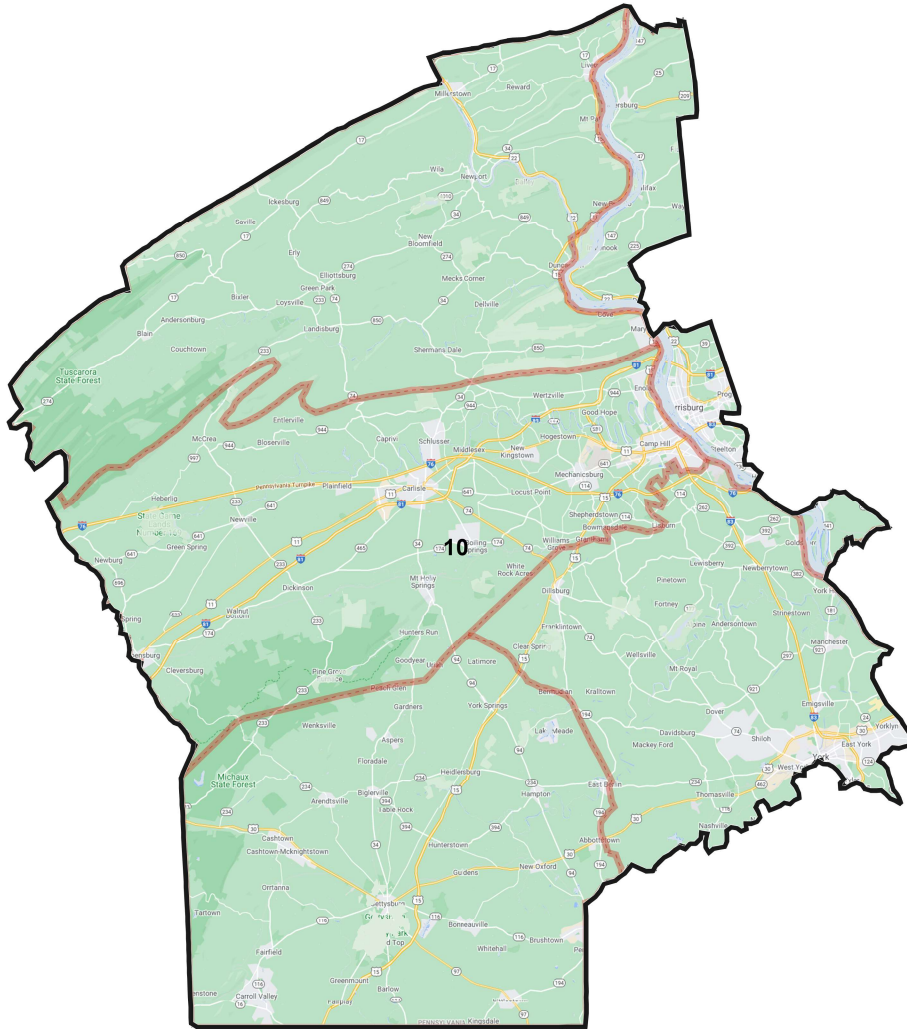


# District: 09



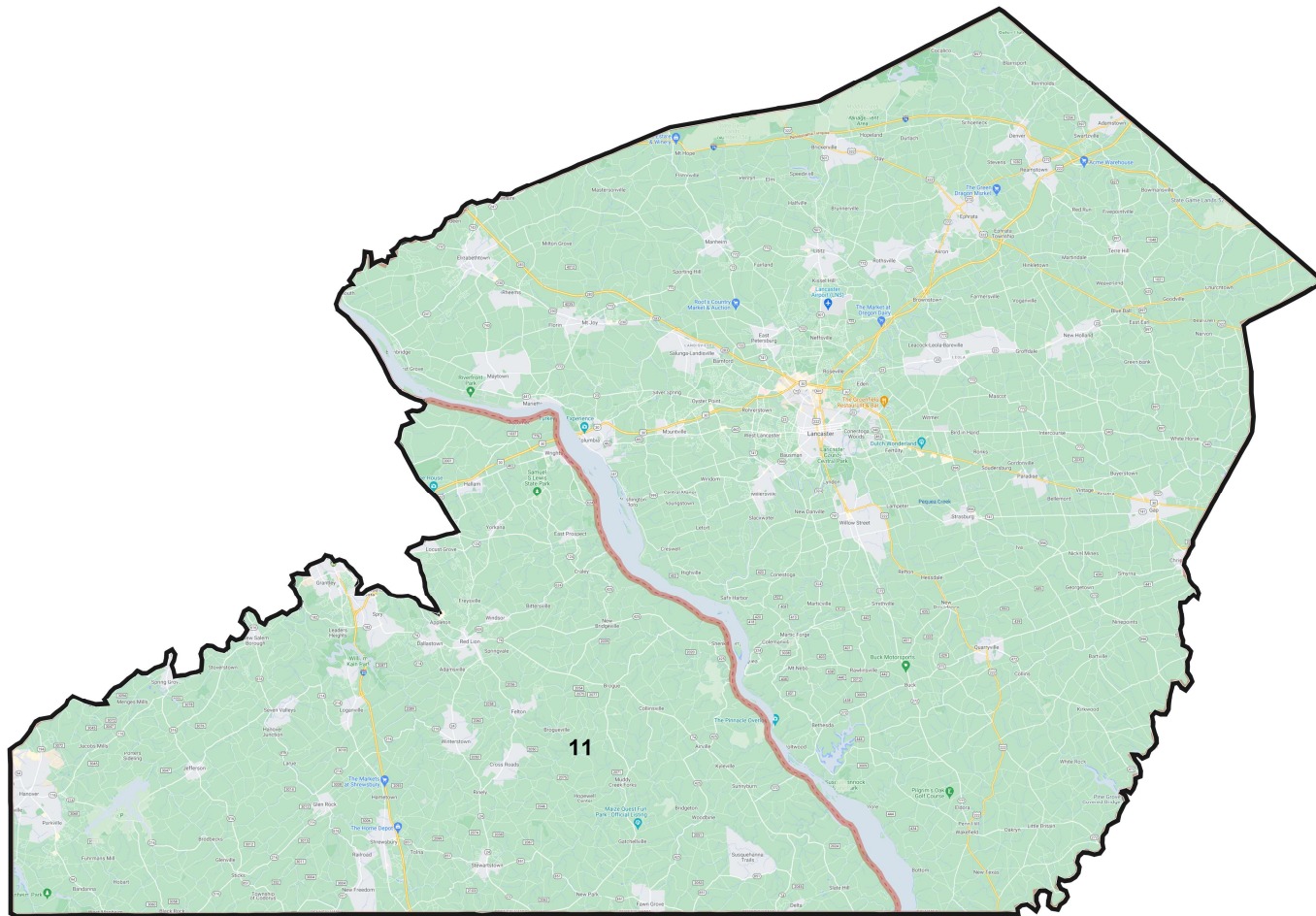
Field	Value
ID	18
District	09
Population	764865
% Deviation	0%
ernate Schwartzberg	1.77
Polsby Popper	0.32
% NH_Wht	83.52%
% AP_BlK	5.21%
% AP_Ind	1.37%
% AP_Asn	2.84%
% AP_Hwn	0.12%
% AP_Oth	5.92%
% Hispanic Origin	7.23%
% NH18+_Wht	85.83%
% 18+_AP_BlK	4.47%
% 18+_AP_Ind	1.24%
% 18+_AP_Asn	2.57%
% 18+_AP_Hwn	0.11%
% 18+_AP_Oth	5.03%
% H18+_Pop	5.85%

# District: 10



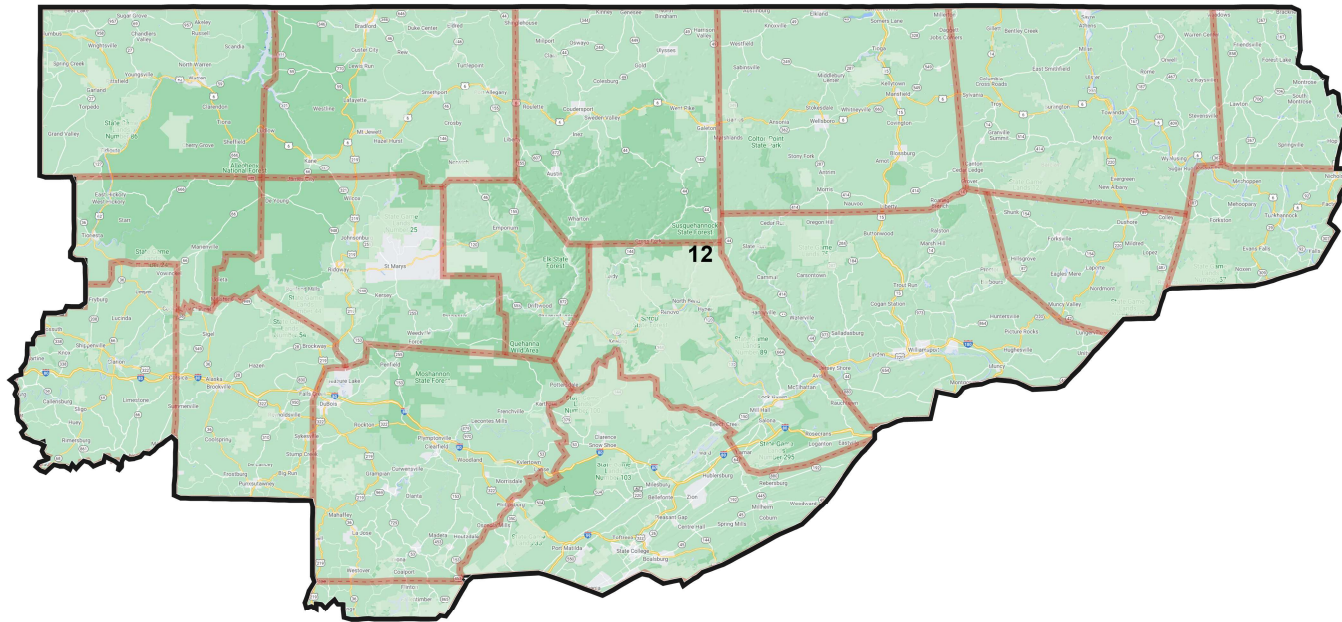
Field	Value
ID	2
District	10
Population	764865
% Deviation	0%
ernate Schwartzberg	1.58
Polsby Popper	0.4
% NH_Wht	75.22%
% AP_BlK	11.05%
% AP_Ind	1.65%
% AP_Asn	3.94%
% AP_Hwn	0.15%
% AP_Oth	7.26%
% Hispanic Origin	8.86%
% NH18+_Wht	78.43%
% 18+_AP_BlK	9.44%
% 18+_AP_Ind	1.53%
% 18+_AP_Asn	3.6%
% 18+_AP_Hwn	0.13%
% 18+_AP_Oth	6.25%
% H18+_Pop	7.28%

# District: 11



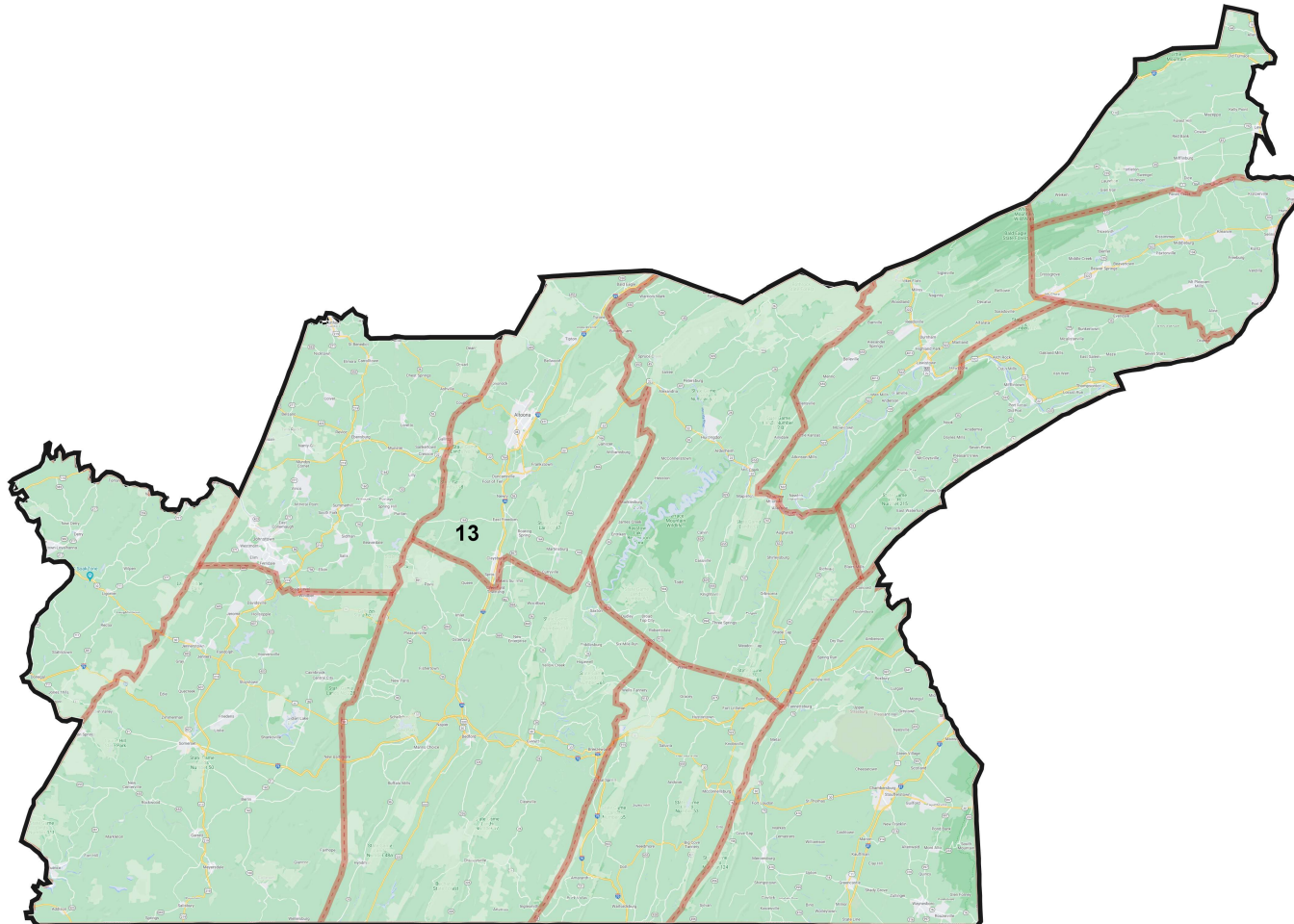
Field	Value
ID	3
District	11
Population	764865
% Deviation	0%
ernate Schwartzberg	1.55
Polsby Popper	0.41
% NH_Wht	81.46%
% AP_BlK	5.67%
% AP_Ind	1.41%
% AP_Asn	2.74%
% AP_Hwn	0.12%
% AP_Oth	7.6%
% Hispanic Origin	9.42%
% NH18+_Wht	83.85%
% 18+_AP_BlK	4.75%
% 18+_AP_Ind	1.3%
% 18+_AP_Asn	2.47%
% 18+_AP_Hwn	0.09%
% 18+_AP_Oth	6.72%
% H18+_Pop	7.96%

## District: 12



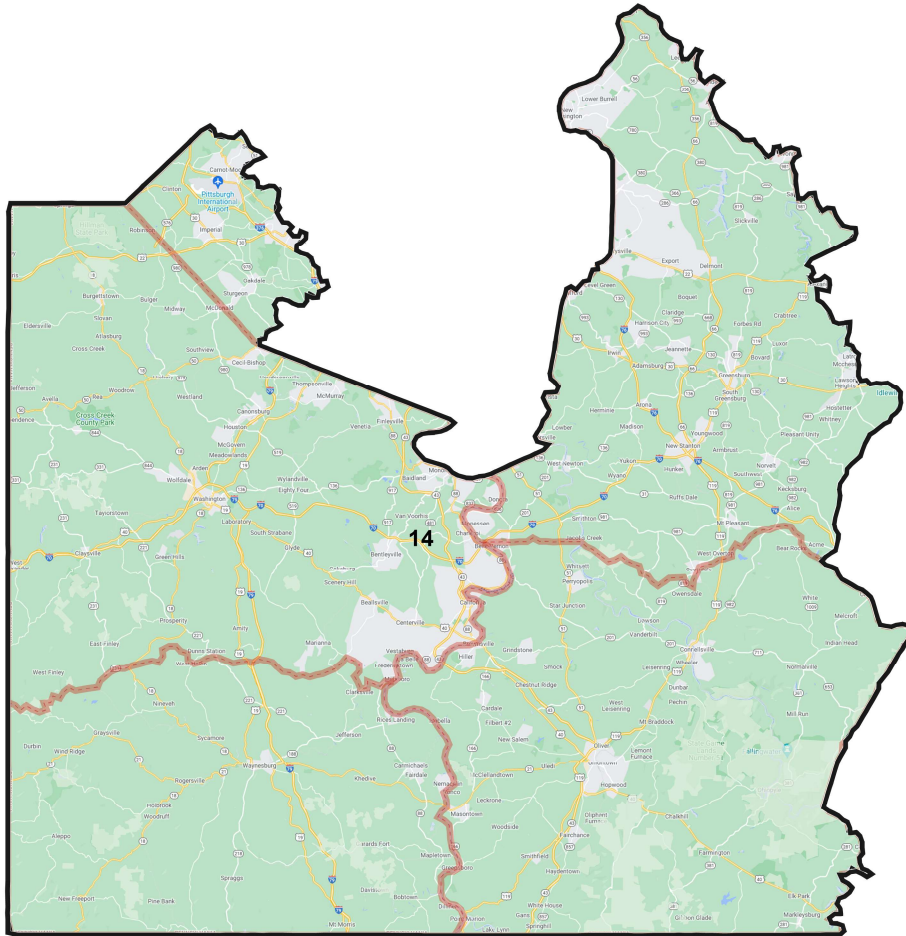
Field	Value
ID	4
District	12
Population	764865
% Deviation	0%
ernate Schwartzberg	1.5
Polsby Popper	0.44
% NH_Wht	89.81%
% AP_BlK	3.15%
% AP_Ind	1.65%
% AP_Asn	2.45%
% AP_Hwn	0.12%
% AP_Oth	2.42%
% Hispanic Origin	2.19%
% NH18+_Wht	90.35%
% 18+_AP_BlK	2.87%
% 18+_AP_Ind	1.51%
% 18+_AP_Asn	2.48%
% 18+_AP_Hwn	0.11%
% 18+_AP_Oth	2.22%
% H18+_Pop	2.03%

# District: 13



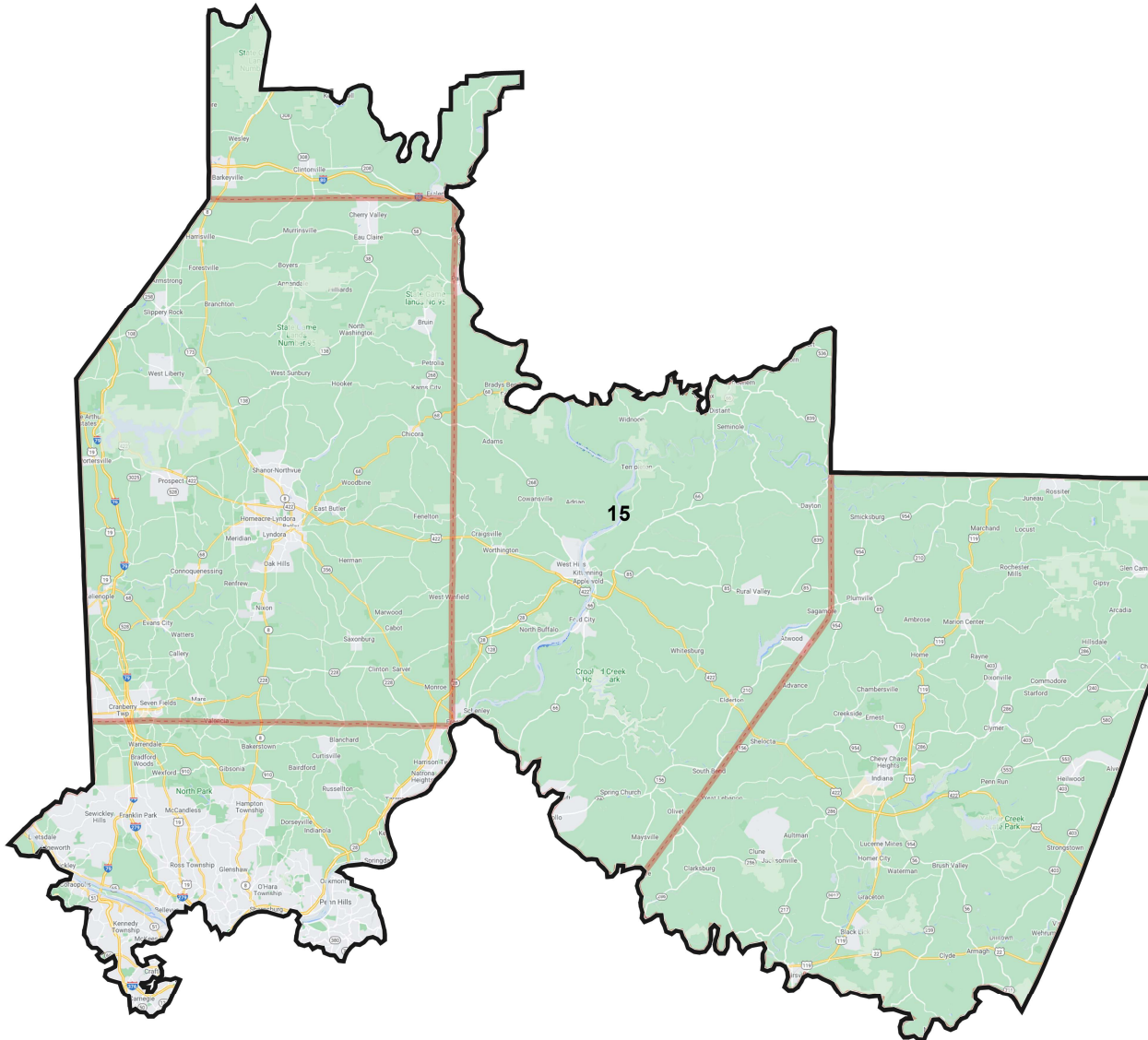
Field	Value
ID	5
District	13
Population	764864
% Deviation	-0%
ernate Schwartzberg	1.81
Polsby Popper	0.3
% NH_Wht	90.25%
% AP_BlK	3.95%
% AP_Ind	1.48%
% AP_Asn	1%
% AP_Hwn	0.09%
% AP_Oth	2.85%
% Hispanic Origin	2.92%
% NH18+_Wht	91.59%
% 18+_AP_BlK	3.33%
% 18+_AP_Ind	1.34%
% 18+_AP_Asn	0.89%
% 18+_AP_Hwn	0.07%
% 18+_AP_Oth	2.41%
% H18+_Pop	2.36%

# District: 14



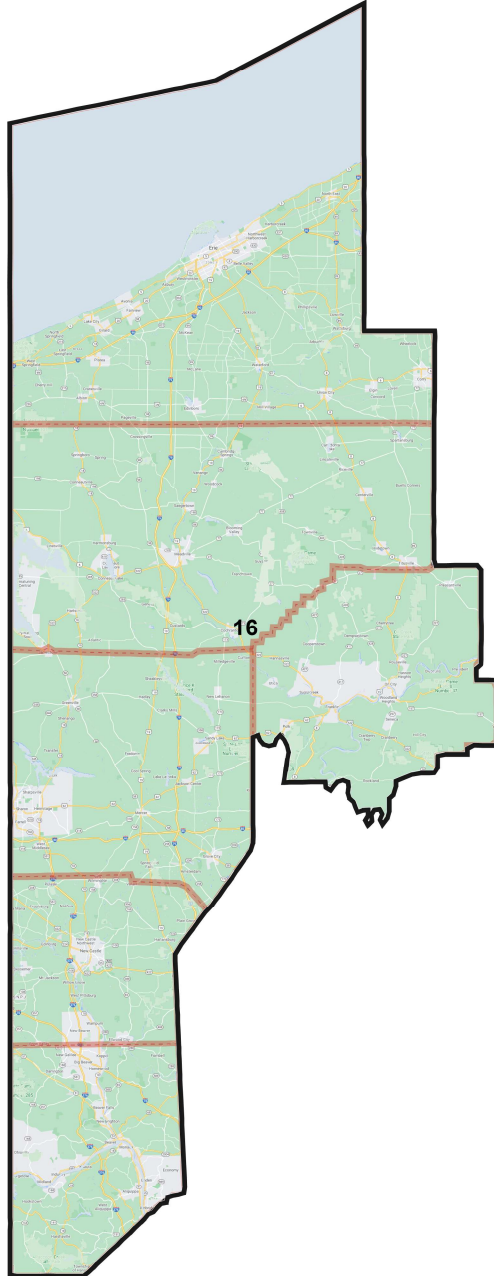
Field	Value
ID	6
District	14
Population	764865
% Deviation	0%
ernate Schwartzberg	1.85
Polsby Popper	0.29
% NH_Wht	89.47%
% AP_BlK	4.69%
% AP_Ind	1.44%
% AP_Asn	1.72%
% AP_Hwn	0.11%
% AP_Oth	2.5%
% Hispanic Origin	1.73%
% NH18+_Wht	90.98%
% 18+_AP_BlK	3.89%
% 18+_AP_Ind	1.29%
% 18+_AP_Asn	1.48%
% 18+_AP_Hwn	0.08%
% 18+_AP_Oth	2.16%
% H18+_Pop	1.43%

# District: 15



Field	Value
ID	7
District	15
Population	764862
% Deviation	-0%
ernate Schwartzberg	2.26
Polsby Popper	0.2
% NH_Wht	86.66%
% AP_BlK	5.93%
% AP_Ind	1.29%
% AP_Asn	3.4%
% AP_Hwn	0.08%
% AP_Oth	2.55%
% Hispanic Origin	1.99%
% NH18+_Wht	88.44%
% 18+_AP_BlK	5.14%
% 18+_AP_Ind	1.16%
% 18+_AP_Asn	2.92%
% 18+_AP_Hwn	0.07%
% 18+_AP_Oth	2.17%
% H18+_Pop	1.65%

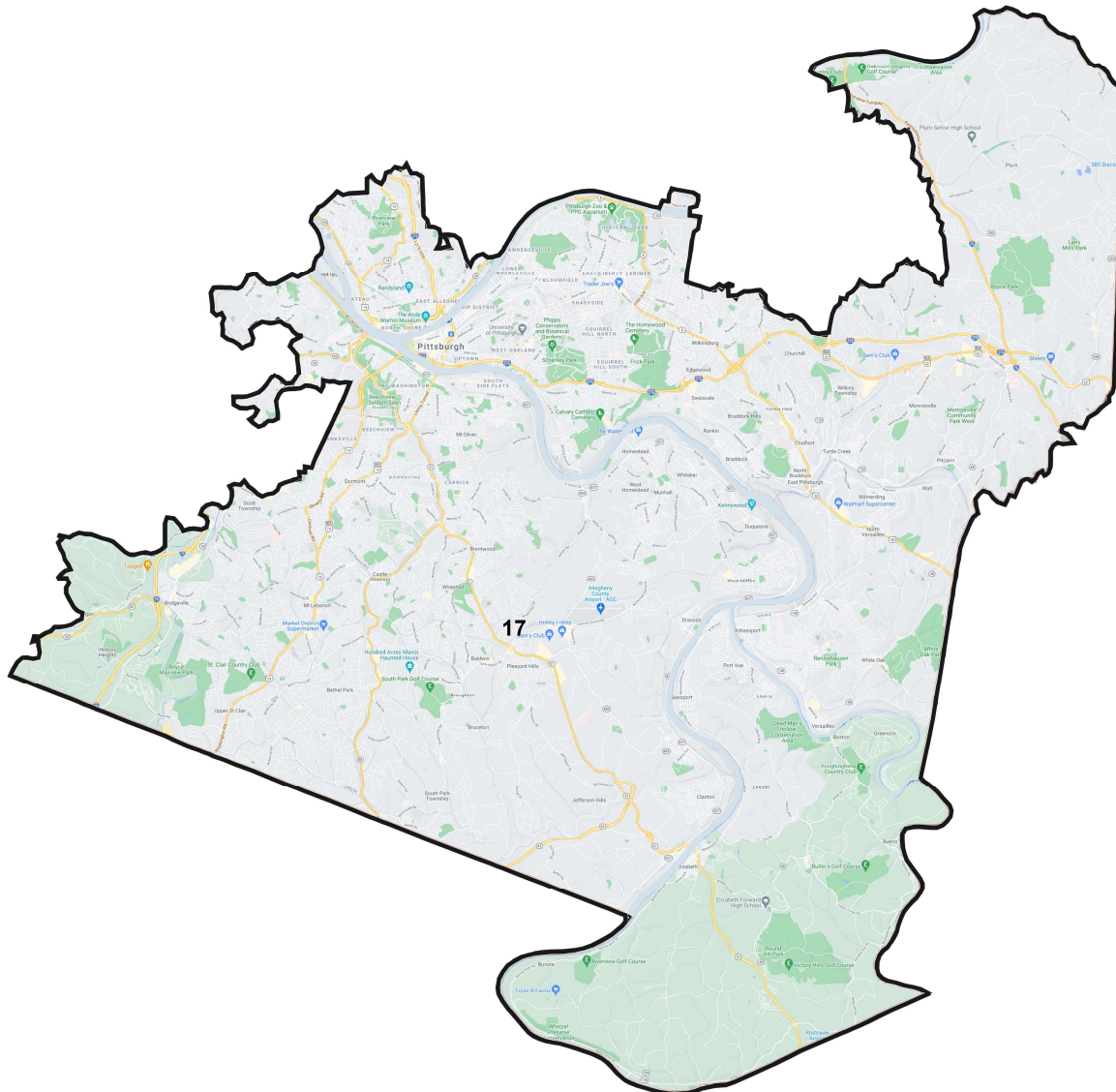
# District: 16



Field	Value
ID	8
District	16
Population	764863
% Deviation	-0%
ernate Schwartzberg	1.65
Polsby Popper	0.37
% NH_Wht	85.68%
% AP_Blak	7.51%
% AP_Ind	1.73%
% AP_Asn	1.61%
% AP_Hwn	0.09%
% AP_Oth	3.1%
% Hispanic Origin	2.7%
% NH18+_Wht	88.02%
% 18+_AP_Blak	6.05%
% 18+_AP_Ind	1.57%
% 18+_AP_Asn	1.39%
% 18+_AP_Hwn	0.08%
% 18+_AP_Oth	2.64%
% H18+_Pop	2.12%



# District: 17



Field	Value
ID	10
District	17
Population	764865
% Deviation	0%
ernate Schwartzberg	2.17
Polsby Popper	0.21
% NH_Wht	70.53%
% AP_BlK	19.3%
% AP_Ind	1.38%
% AP_Asn	5.72%
% AP_Hwn	0.11%
% AP_Oth	3.21%
% Hispanic Origin	2.96%
% NH18+_Wht	73.65%
% 18+_AP_BlK	16.89%
% 18+_AP_Ind	1.23%
% 18+_AP_Asn	5.47%
% 18+_AP_Hwn	0.09%
% 18+_AP_Oth	2.79%
% H18+_Pop	2.59%