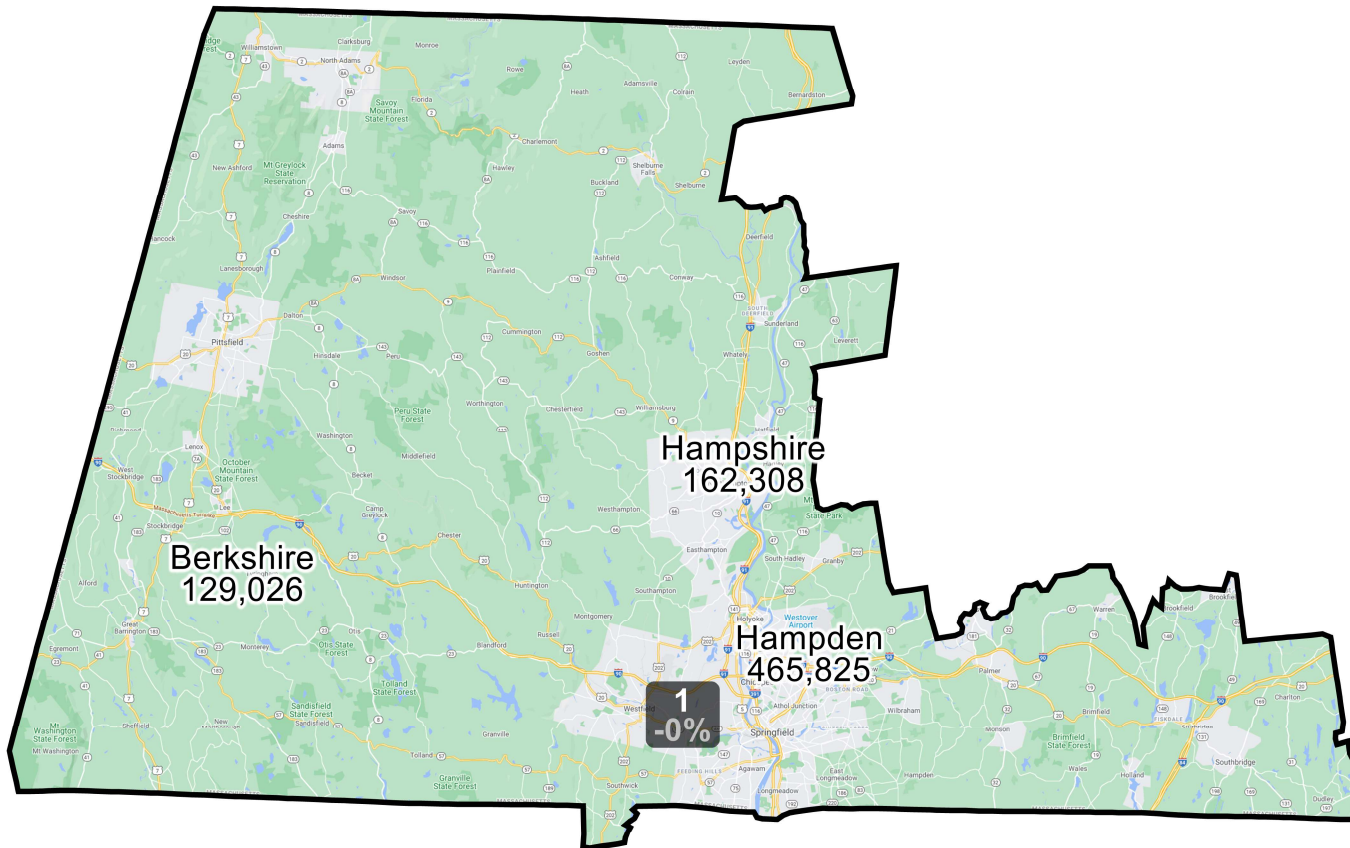
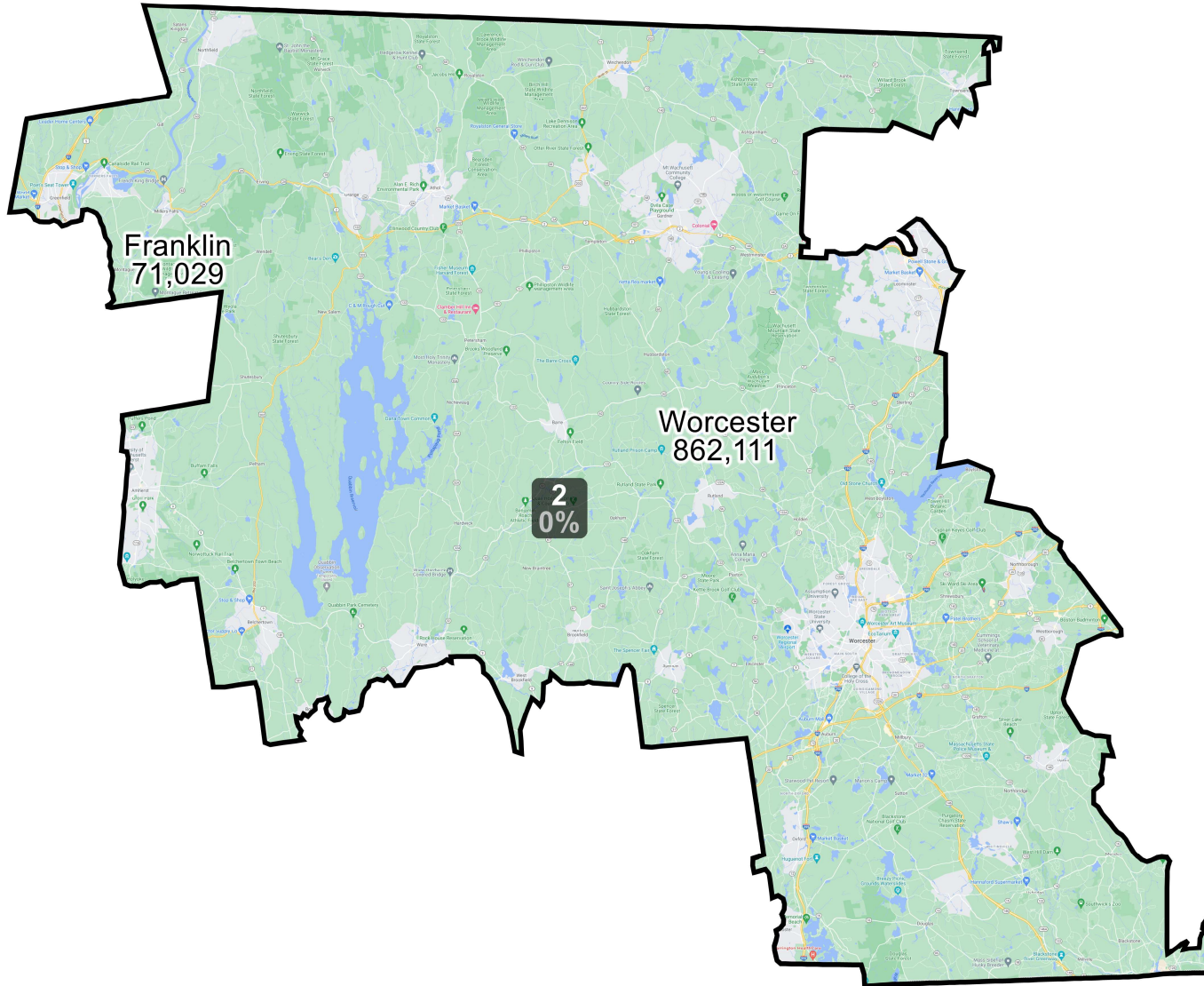


District: 1



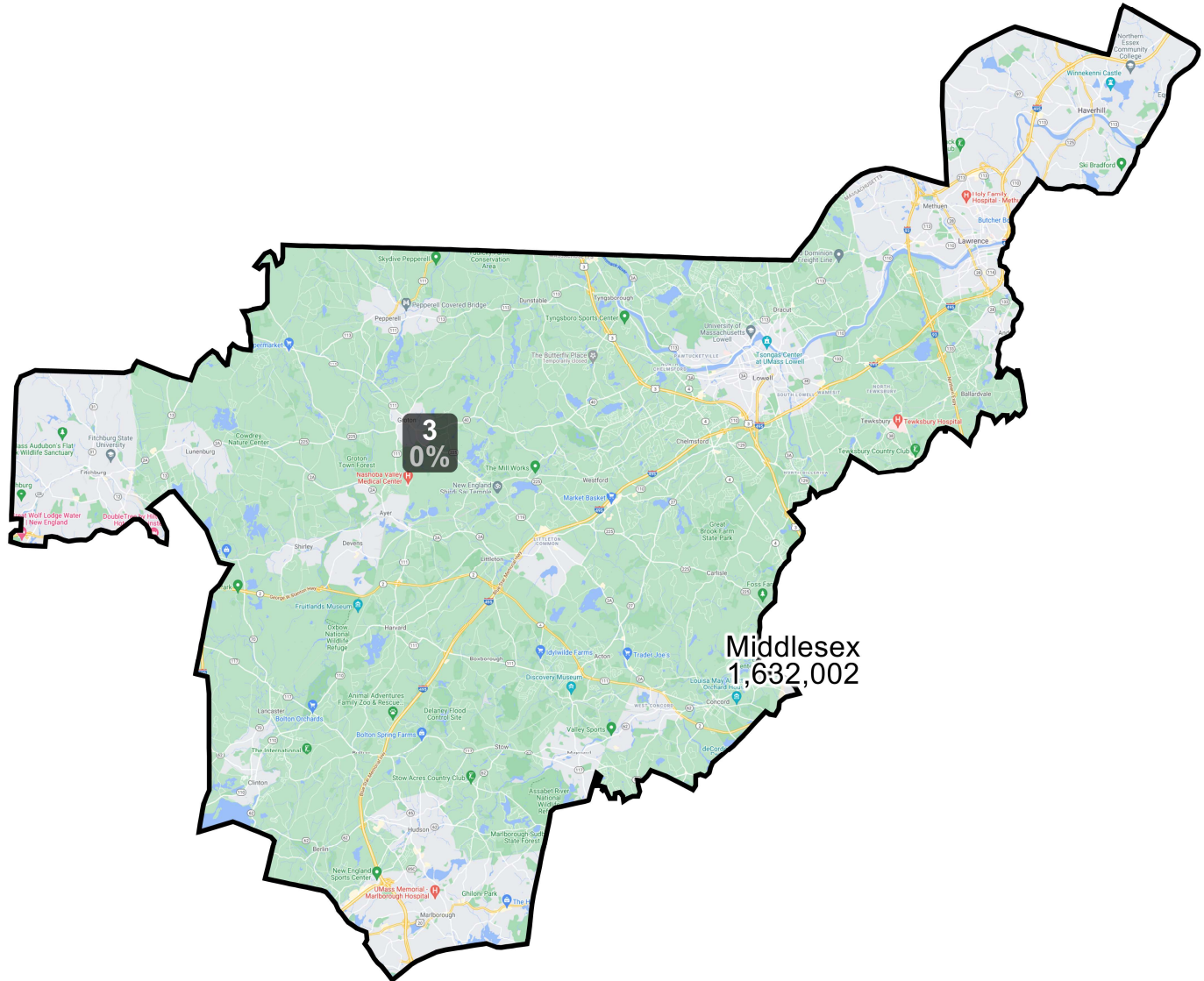
Field	Value
District	1
Population	781,101
Deviation	-1
% Deviation	-0%
% NH CVAP 19	85.7%
% NH White CVAP 19	77.8%
% NH Black CVAP 19	5.4%
% NH Asian CVAP 19	1.8%
% H CVAP 19	14.3%
% D 20_Pres	64.0%
% R 20_Pres	36.0%
ernate Schwartzberg	1.71
Polsby Popper	0.34
Perimeter	306.6
Reock	0.42
NH_Wht	541430
% NH_Wht	69.32%
AP_BlK	65935
% AP_BlK	8.44%
AP_Ind	14382
% AP_Ind	1.84%
AP_Asn	25362
% AP_Asn	3.25%
AP_Hwn	1503
% AP_Hwn	0.19%
AP_Oth	114838
% AP_Oth	14.7%
Hispanic Origin	144944
% Hispanic Origin	18.56%
18+_Pop	627959
NH18+_Wht	458924
% NH18+_Wht	73.08%
18+_AP_BlK	45961
% 18+_AP_BlK	7.32%
18+_AP_Ind	10821

District: 2



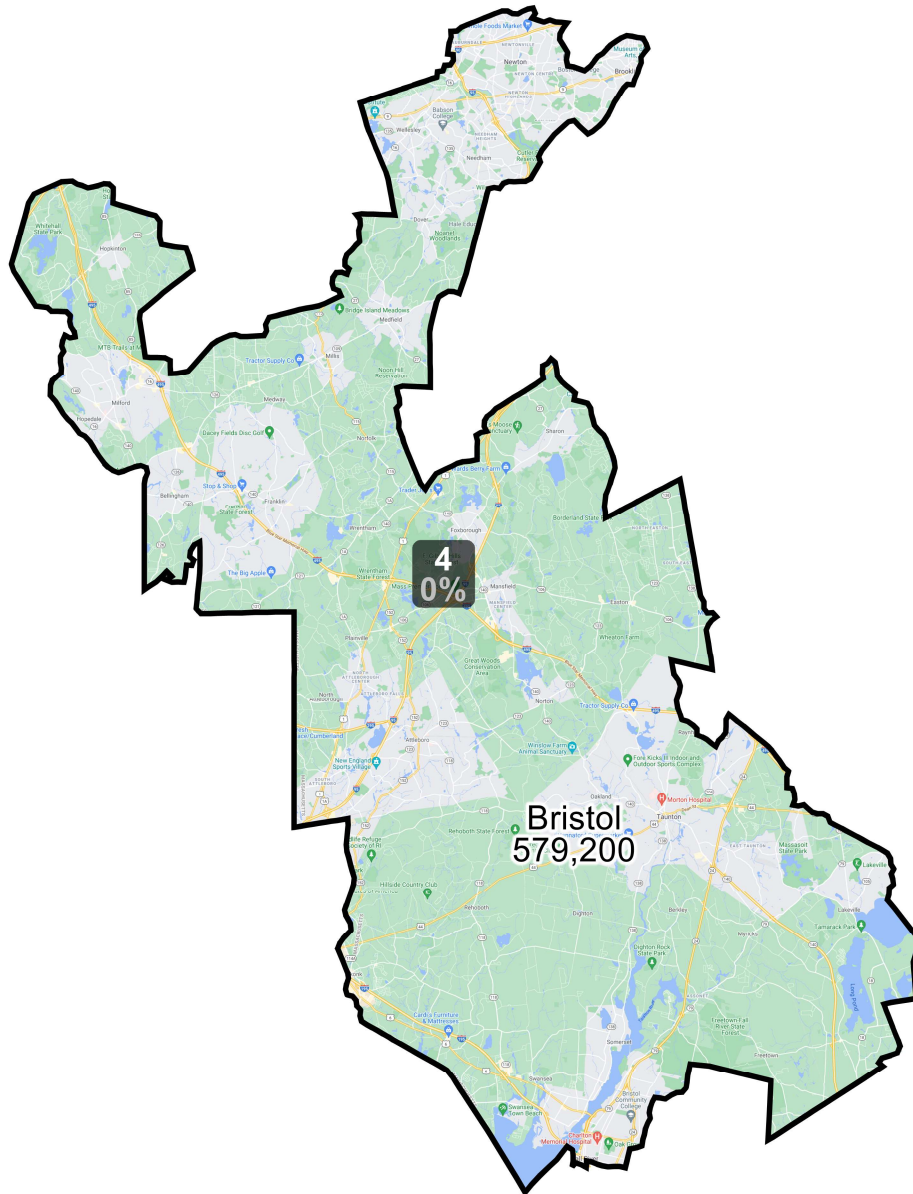
Field	Value
District	2
Population	781,103
Deviation	1
% Deviation	0%
% NH CVAP 19	92.2%
% NH White CVAP 19	83.4%
% NH Black CVAP 19	4.1%
% NH Asian CVAP 19	3.9%
% H CVAP 19	7.8%
% D 20_Pres	60.8%
% R 20_Pres	39.2%
ernate Schwartzberg	1.99
Polsby Popper	0.25
Perimeter	292.9
Reock	0.4
NH_Wht	560641
% NH_Wht	71.78%
AP_BlK	59334
% AP_BlK	7.6%
AP_Ind	12441
% AP_Ind	1.59%
AP_Asn	55577
% AP_Asn	7.12%
AP_Hwn	1074
% AP_Hwn	0.14%
AP_Oth	83787
% AP_Oth	10.73%
Hispanic Origin	89187
% Hispanic Origin	11.42%
18+_Pop	626646
NH18+_Wht	469011
% NH18+_Wht	74.84%
18+_AP_BlK	40843
% 18+_AP_BlK	6.52%
18+_AP_Ind	9248

District: 3



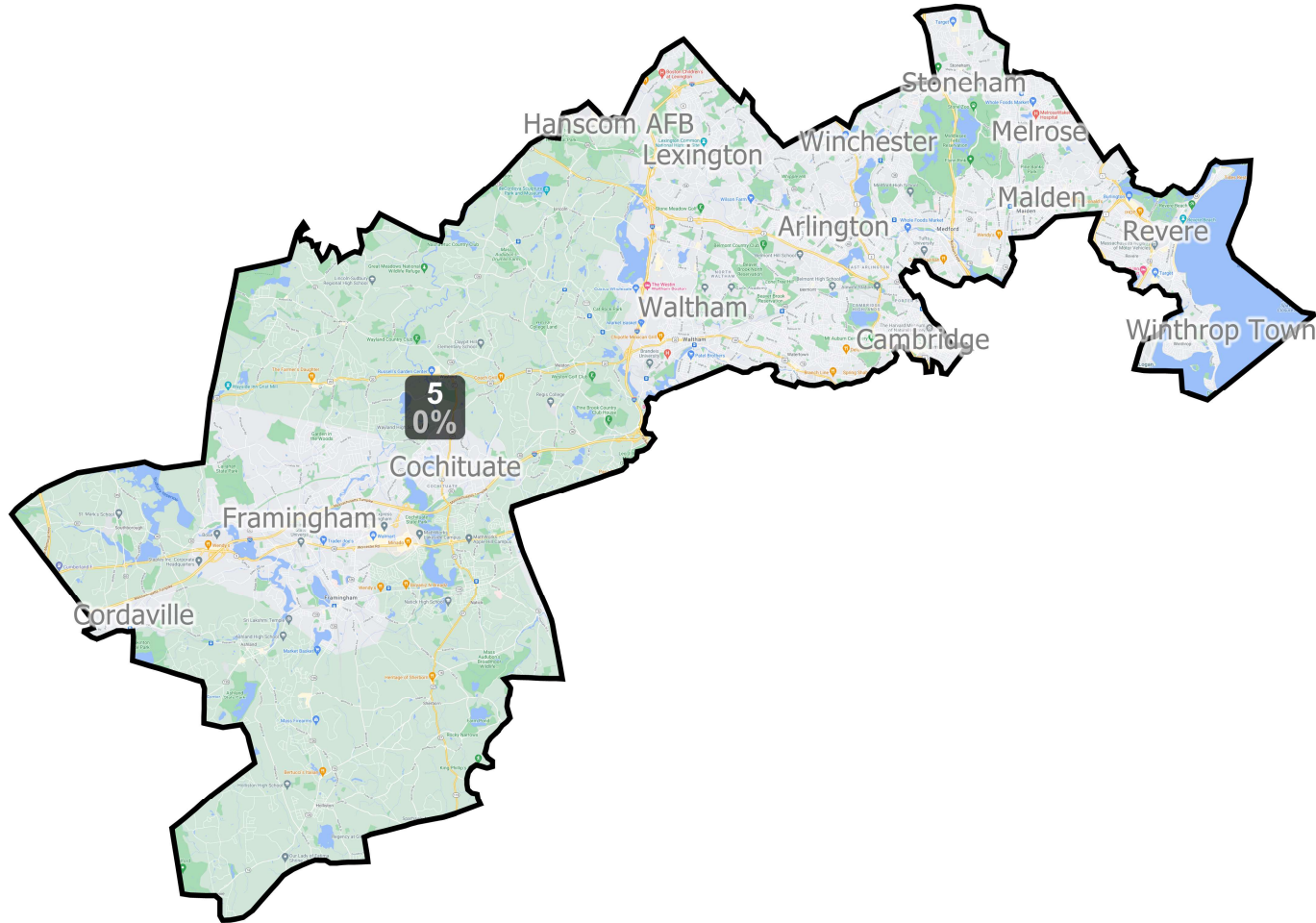
Field	Value
District	3
Population	781,102
Deviation	0
% Deviation	0%
% NH CVAP 19	85.1%
% NH White CVAP 19	74.6%
% NH Black CVAP 19	3.1%
% NH Asian CVAP 19	6.8%
% H CVAP 19	14.9%
% D 20_Pres	65.0%
% R 20_Pres	35.0%
ernate Schwartzberg	1.98
Polsby Popper	0.25
Perimeter	177.36
Reock	0.35
NH_Wht	470810
% NH_Wht	60.28%
AP_BlK	54330
% AP_BlK	6.96%
AP_Ind	11019
% AP_Ind	1.41%
AP_Asn	76640
% AP_Asn	9.81%
AP_Hwn	1370
% AP_Hwn	0.18%
AP_Oth	158620
% AP_Oth	20.31%
Hispanic Origin	169237
% Hispanic Origin	21.67%
18+_Pop	610651
NH18+_Wht	390147
% NH18+_Wht	63.89%
18+_AP_BlK	38210
% 18+_AP_BlK	6.26%
18+_AP_Ind	8193

District: 4



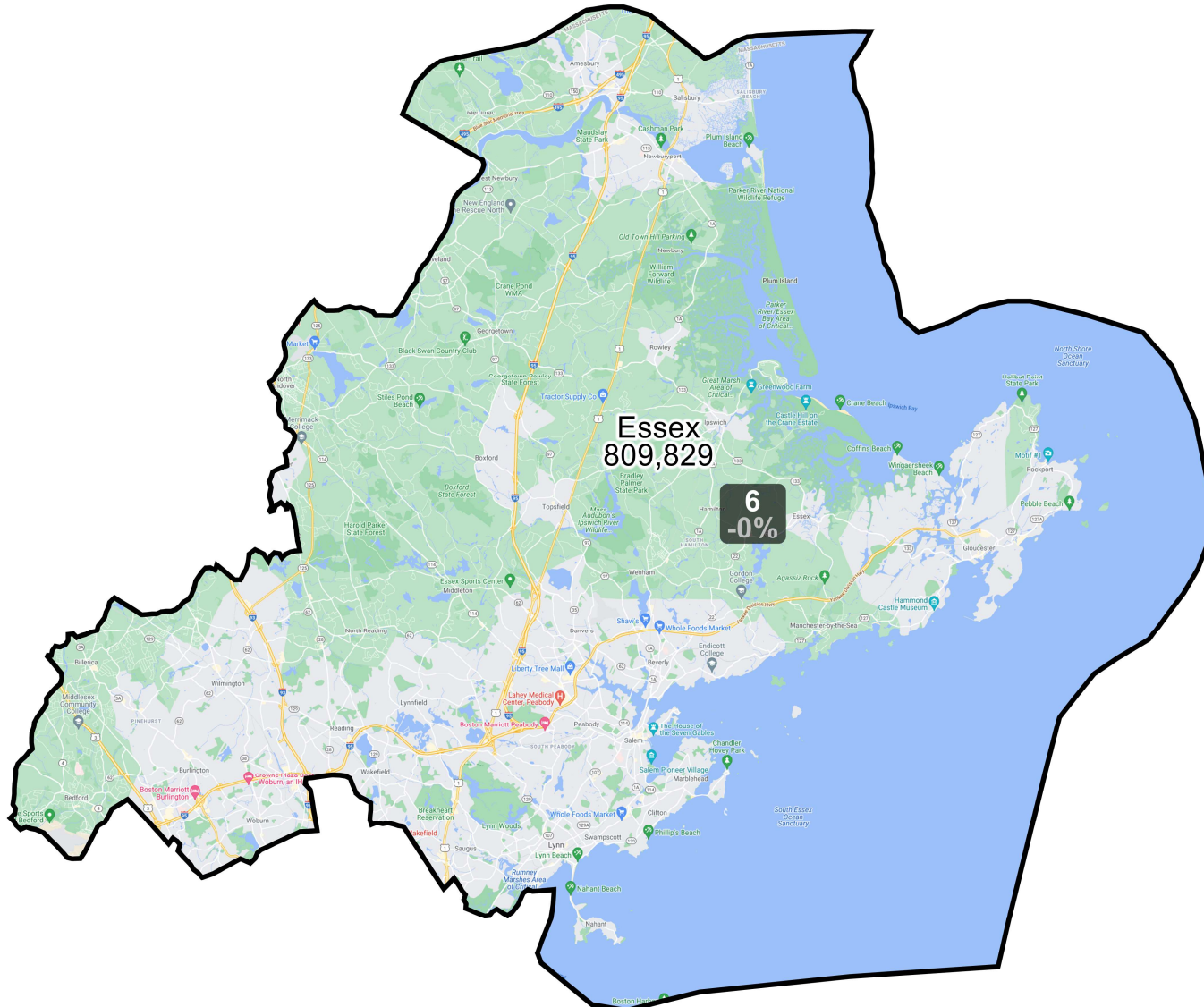
Field	Value
District	4
Population	781,103
Deviation	1
% Deviation	0%
% NH CVAP 19	96.2%
% NH White CVAP 19	87.7%
% NH Black CVAP 19	2.9%
% NH Asian CVAP 19	4.9%
% H CVAP 19	3.8%
% D 20_Pres	65.6%
% R 20_Pres	34.4%
ernate Schwartzberg	2.43
Polsby Popper	0.17
Perimeter	228.75
Reock	0.38
NH_Wht	611981
% NH_Wht	78.35%
AP_BlK	39372
% AP_BlK	5.04%
AP_Ind	7677
% AP_Ind	0.98%
AP_Asn	68211
% AP_Asn	8.73%
AP_Hwn	888
% AP_Hwn	0.11%
AP_Oth	53901
% AP_Oth	6.9%
Hispanic Origin	41883
% Hispanic Origin	5.36%
18+_Pop	614425
NH18+_Wht	496630
% NH18+_Wht	80.83%
18+_AP_BlK	26854
% 18+_AP_BlK	4.37%
18+_AP_Ind	5478
% 18+_AP_Ind	0.89%
18+_AP_Asn	48039
% 18+_AP_Asn	7.82%
18+_AP_Hwn	647
% 18+_AP_Hwn	0.11%

District: 5



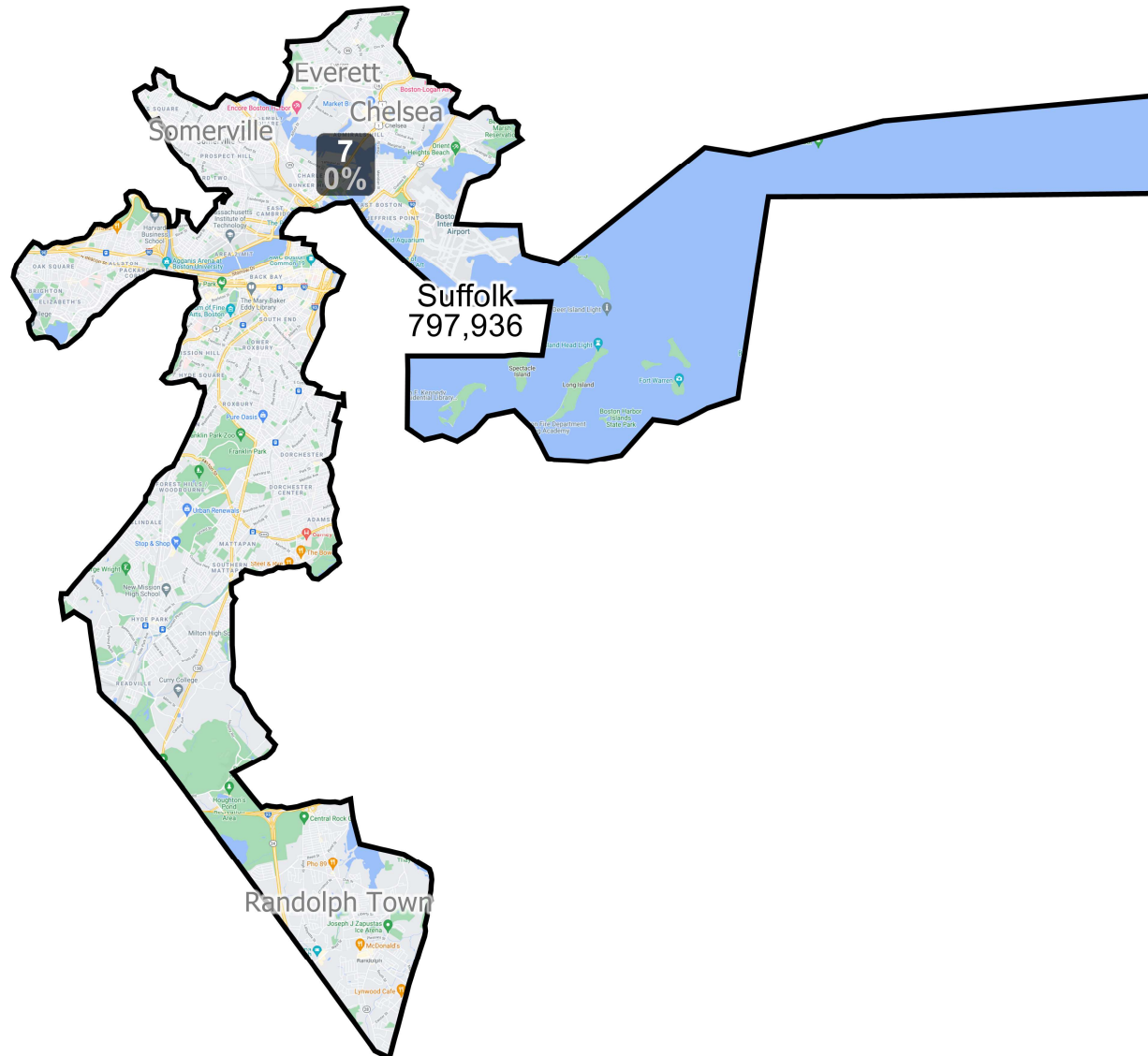
Field	Value
District	5
Population	781,102
Deviation	0
% Deviation	0%
% NH CVAP 19	93.4%
% NH White CVAP 19	78.8%
% NH Black CVAP 19	5.2%
% NH Asian CVAP 19	8.8%
% H CVAP 19	6.6%
% D 20_Pres	77.0%
% R 20_Pres	23.0%
ernate Schwartzberg	2.39
Polsby Popper	0.17
Perimeter	141.06
Reock	0.3
NH_Wht	499262
% NH_Wht	63.92%
AP_BlK	55317
% AP_BlK	7.08%
AP_Ind	7727
% AP_Ind	0.99%
AP_Asn	115881
% AP_Asn	14.84%
AP_Hwn	1012
% AP_Hwn	0.13%
AP_Oth	99228
% AP_Oth	12.7%
Hispanic Origin	82052
% Hispanic Origin	10.5%
18+_Pop	631350
NH18+_Wht	418724
% NH18+_Wht	66.32%
18+_AP_BlK	41510
% 18+_AP_BlK	6.57%
18+_AP_Ind	5780

District: 6



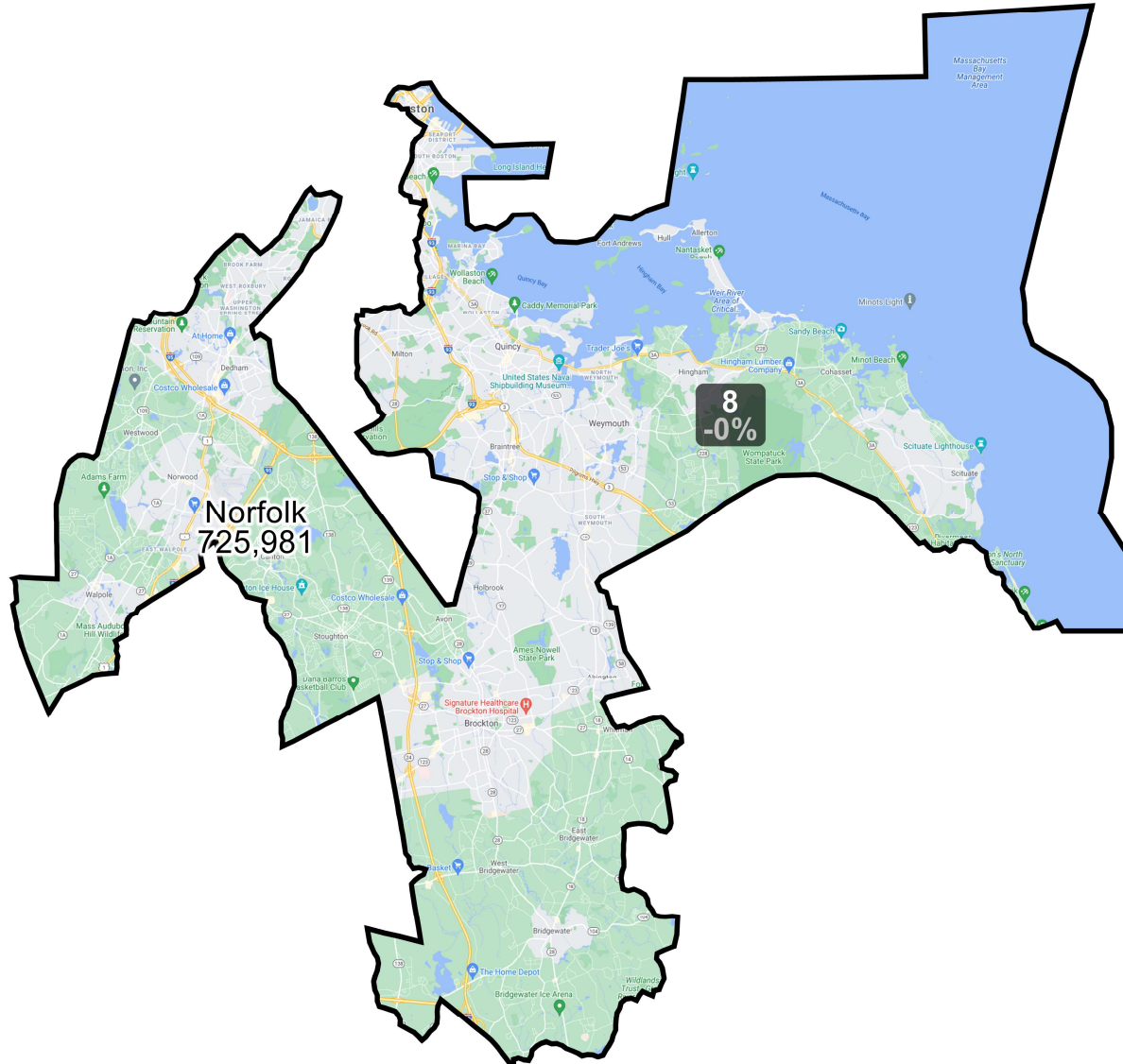
Field	Value
District	6
Population	781,101
Deviation	-1
% Deviation	-0%
% NH CVAP 19	94.0%
% NH White CVAP 19	87.1%
% NH Black CVAP 19	2.9%
% NH Asian CVAP 19	3.6%
% H CVAP 19	6.0%
% D 20_Pres	64.1%
% R 20_Pres	35.9%
ernate Schwartzberg	1.57
Polsby Popper	0.41
Perimeter	161.33
Reock	0.57
NH_Wht	596824
% NH_Wht	76.41%
AP_BlK	40766
% AP_BlK	5.22%
AP_Ind	9164
% AP_Ind	1.17%
AP_Asn	44294
% AP_Asn	5.67%
AP_Hwn	910
% AP_Hwn	0.12%
AP_Oth	86794
% AP_Oth	11.11%
Hispanic Origin	85112
% Hispanic Origin	10.9%
18+_Pop	625448
NH18+_Wht	496051
% NH18+_Wht	79.31%
18+_AP_BlK	28378
% 18+_AP_BlK	4.54%
18+_AP_Ind	6687

District: 7



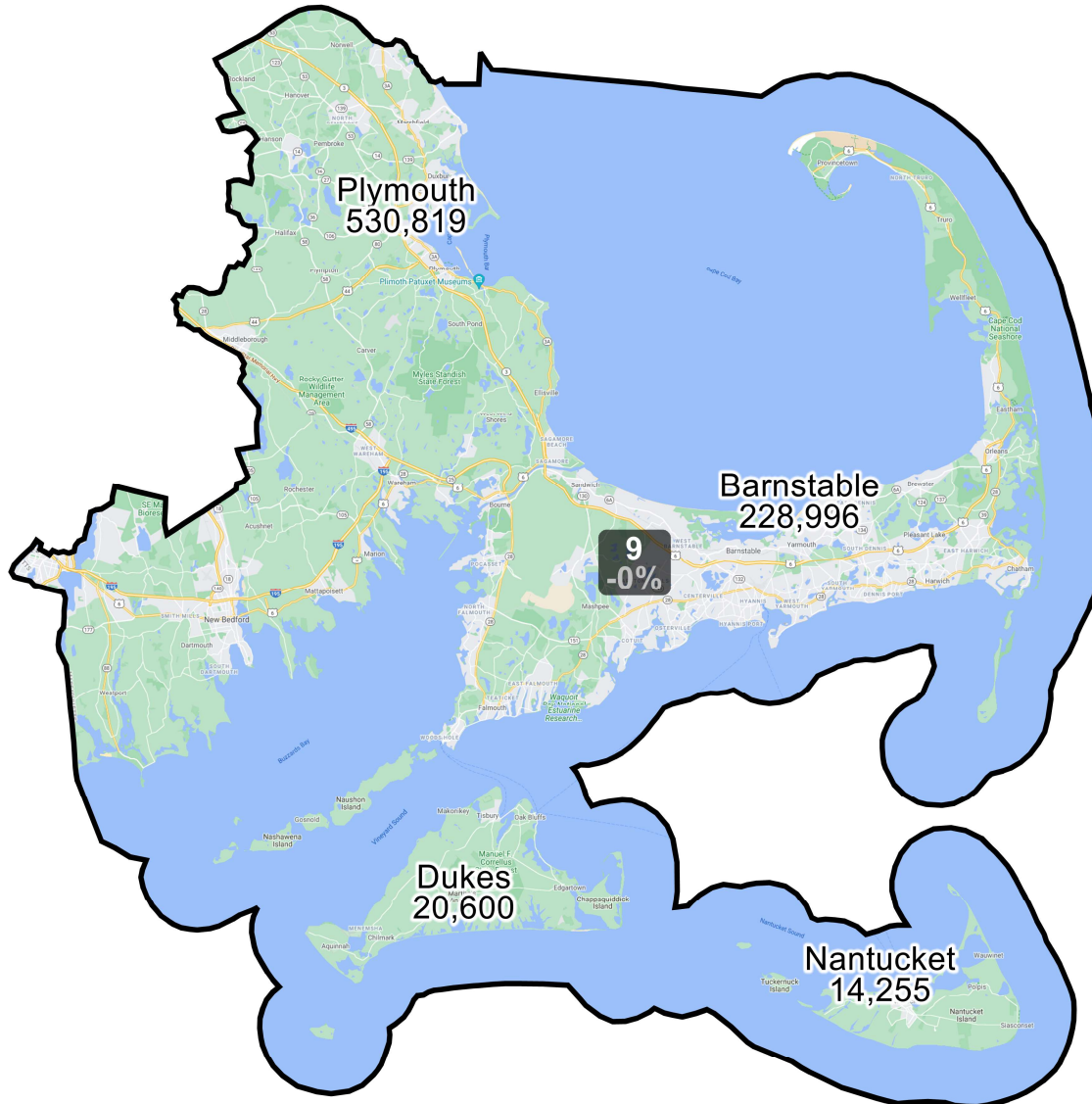
Field	Value
District	7
Population	781,103
Deviation	1
% Deviation	0%
% NH CVAP 19	84.3%
% NH White CVAP 19	50.9%
% NH Black CVAP 19	23.8%
% NH Asian CVAP 19	8.6%
% H CVAP 19	15.7%
% D 20_Pres	86.3%
% R 20_Pres	13.7%
ernate Schwartzberg	3.5
Polsby Popper	0.08
Perimeter	123.38
Reock	0.21
NH_Wht	303790
% NH_Wht	38.89%
AP_BlK	205070
% AP_BlK	26.25%
AP_Ind	11618
% AP_Ind	1.49%
AP_Asn	101785
% AP_Asn	13.03%
AP_Hwn	1541
% AP_Hwn	0.2%
AP_Oth	169560
% AP_Oth	21.71%
Hispanic Origin	171320
% Hispanic Origin	21.93%
18+_Pop	655565
NH18+_Wht	278095
% NH18+_Wht	42.42%
18+_AP_BlK	157800
% 18+_AP_BlK	24.07%
18+_AP_Ind	9097

District: 8



Field	Value
District	8
Population	781,101
Deviation	-1
% Deviation	-0%
% NH CVAP 19	95.3%
% NH White CVAP 19	79.0%
% NH Black CVAP 19	9.2%
% NH Asian CVAP 19	6.3%
% H CVAP 19	4.7%
% D 20_Pres	67.3%
% R 20_Pres	32.7%
ernate Schwartzberg	2.76
Polsby Popper	0.13
Perimeter	216.47
Reock	0.4
NH_Wht	525951
% NH_Wht	67.33%
AP_BlK	106232
% AP_BlK	13.6%
AP_Ind	7703
% AP_Ind	0.99%
AP_Asn	79204
% AP_Asn	10.14%
AP_Hwn	1035
% AP_Hwn	0.13%
AP_Oth	79540
% AP_Oth	10.18%
Hispanic Origin	51140
% Hispanic Origin	6.55%
18+_Pop	633946
NH18+_Wht	443975
% NH18+_Wht	70.03%
18+_AP_BlK	76905
% 18+_AP_BlK	12.13%
18+_AP_Ind	5725

District: 9



Field	Value
District	9
Population	781,101
Deviation	-1
% Deviation	-0%
% NH CVAP 19	96.4%
% NH White CVAP 19	91.2%
% NH Black CVAP 19	3.0%
% NH Asian CVAP 19	1.3%
% H CVAP 19	3.6%
% D 20_Pres	58.9%
% R 20_Pres	41.1%
ernate Schwartzberg	1.89
Polsby Popper	0.28
Perimeter	379.77
Reock	0.59
NH_Wht	638208
% NH_Wht	81.71%
AP_BlK	43510
% AP_BlK	5.57%
AP_Ind	12309
% AP_Ind	1.58%
AP_Asn	15530
% AP_Asn	1.99%
AP_Hwn	1103
% AP_Hwn	0.14%
AP_Oth	78564
% AP_Oth	10.06%
Hispanic Origin	52810
% Hispanic Origin	6.76%
18+_Pop	637733
NH18+_Wht	537428
% NH18+_Wht	84.27%
18+_AP_BlK	29852
% 18+_AP_BlK	4.68%
18+_AP_Ind	8907