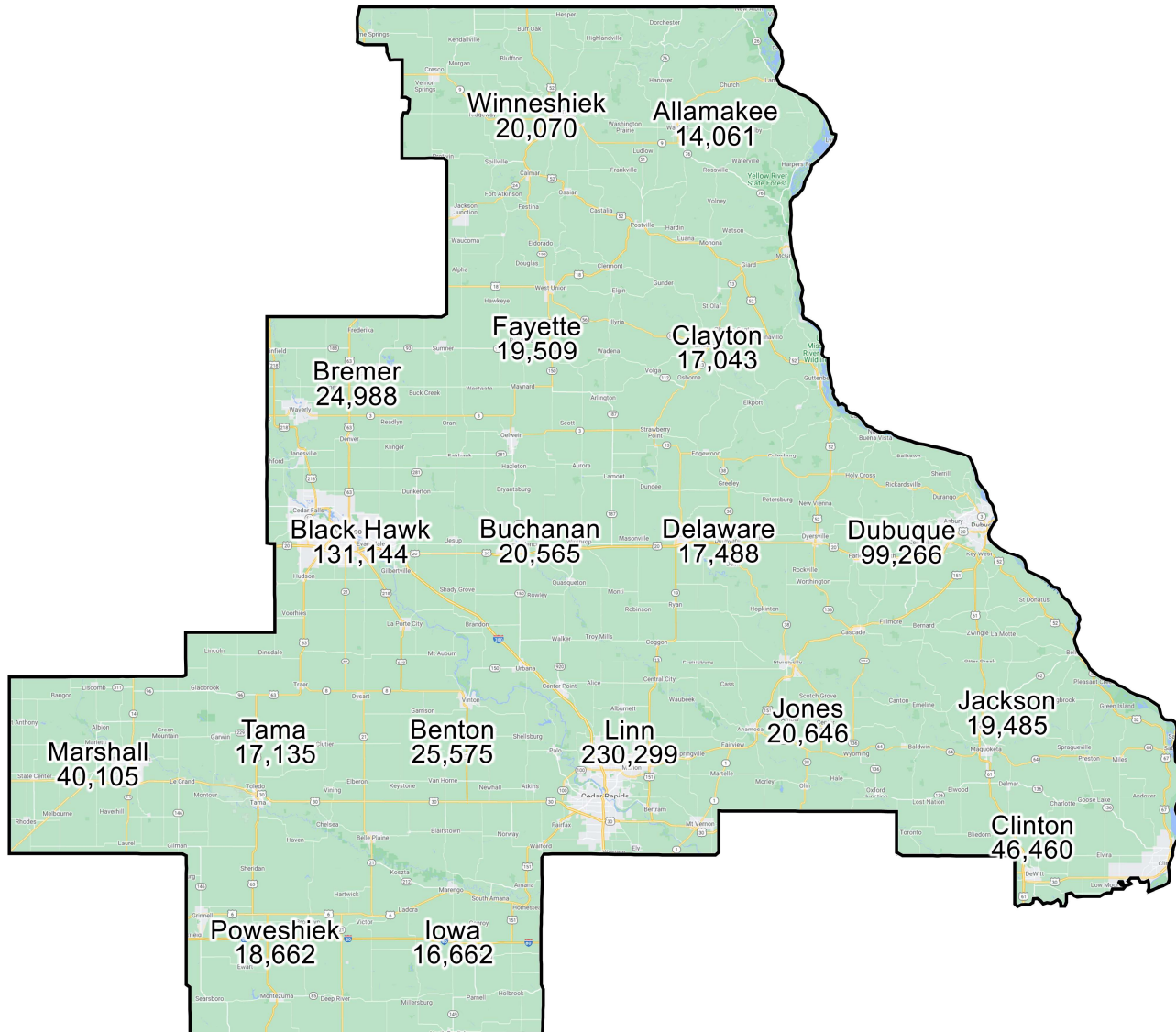
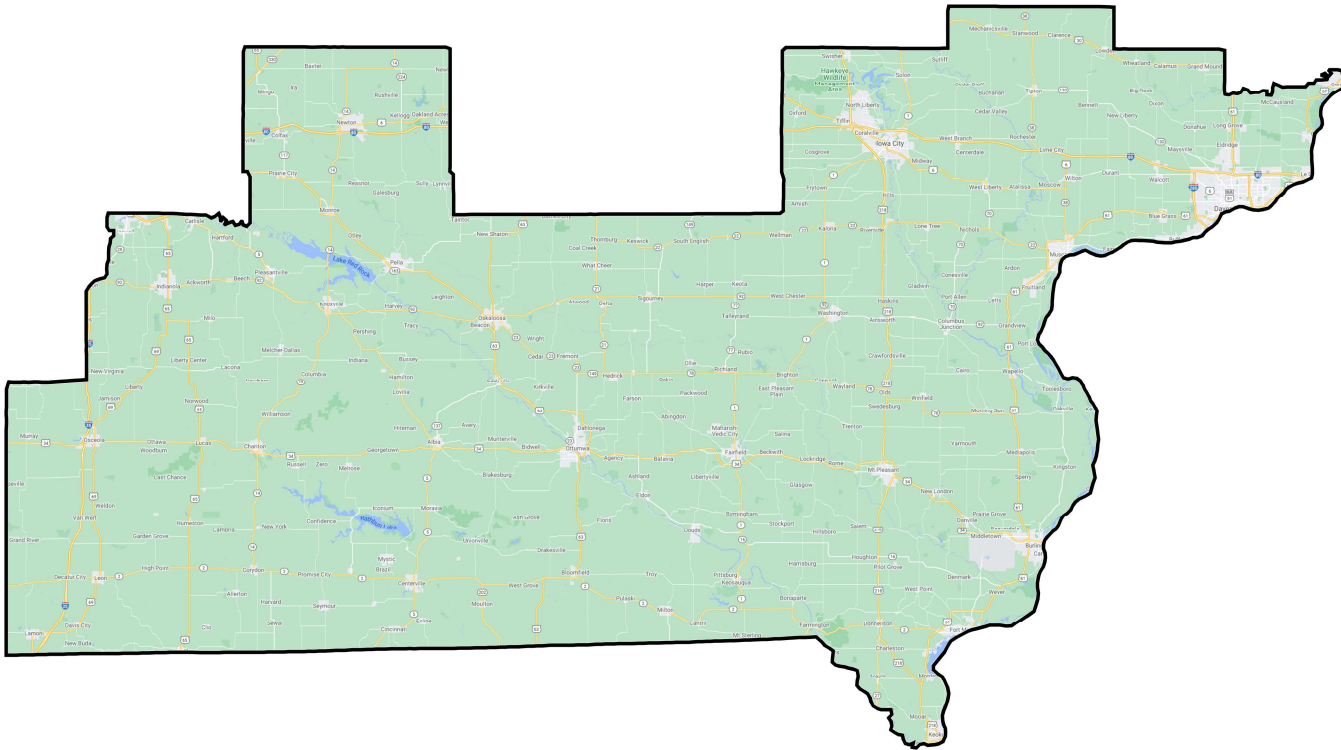


District: 1



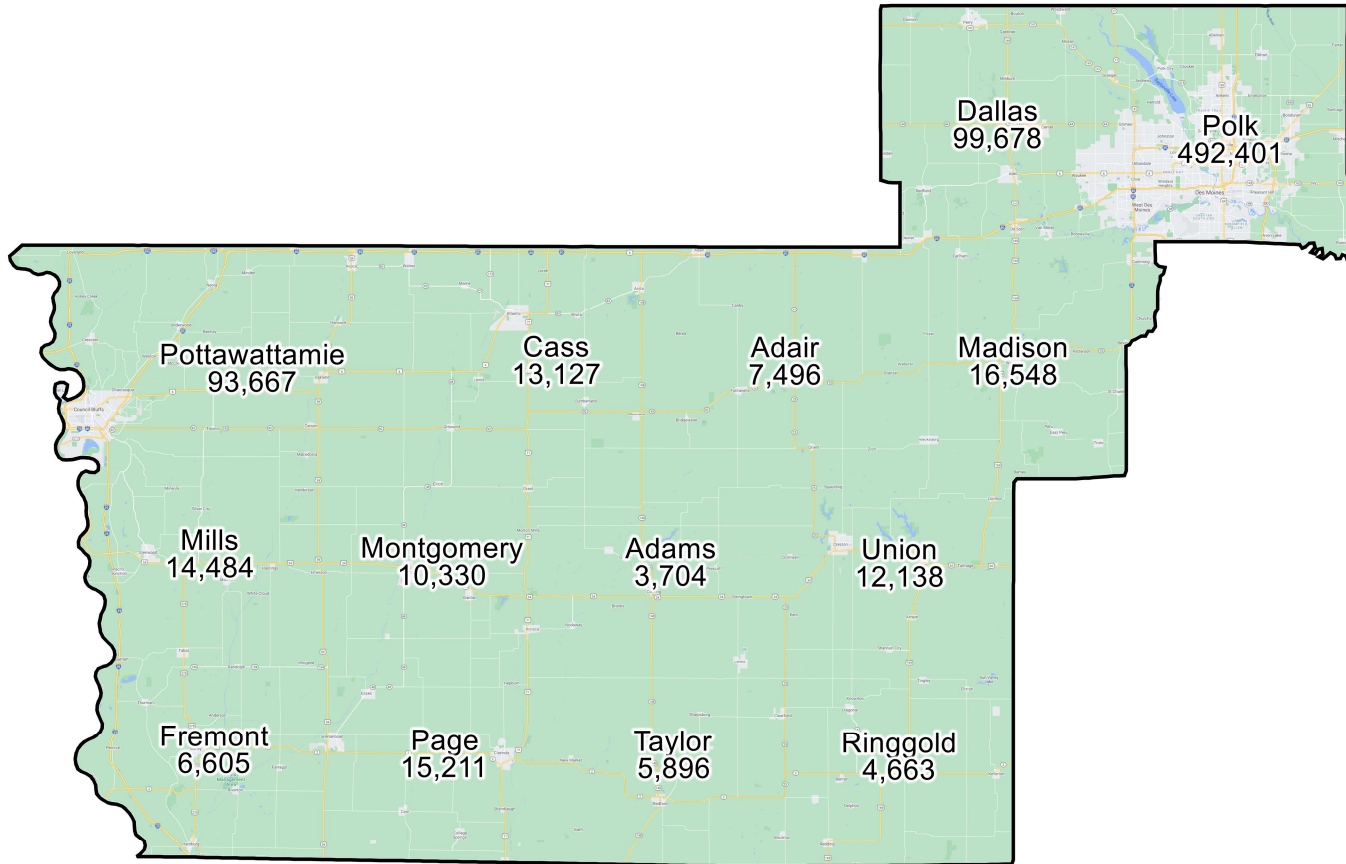
Field	Value
District	1
Population	797,593
Deviation	1
% Deviation	0%
% NH CVAP 19	97.8%
% NH White CVAP 19	92.3%
% NH Black CVAP 19	3.7%
% NH Asian CVAP 19	1.0%
% H CVAP 19	2.2%
% D 20_Pres	48.5%
% R 20_Pres	51.5%
ernate Schwartzberg	1.69
Polsby Popper	0.35
NH_Wht	675661
% NH_Wht	84.71%
AP_BlK	50495
% AP_BIK	6.33%
AP_Ind	13811
% AP_Ind	1.73%
AP_Asn	17122
% AP_Asn	2.15%
AP_Hwn	3178
% AP_Hwn	0.4%
AP_Oth	30624
% AP_Oth	3.84%
Hispanic Origin	36833
% Hispanic Origin	4.62%
18+_Pop	615913
NH18+_Wht	538336
% NH18+_Wht	87.4%
18+_AP_BlK	30486
% 18+_AP_BIK	4.95%
18+_AP_Ind	9469
% 18+_AP_Ind	1.54%
18+_AP_Asn	11664

District: 2



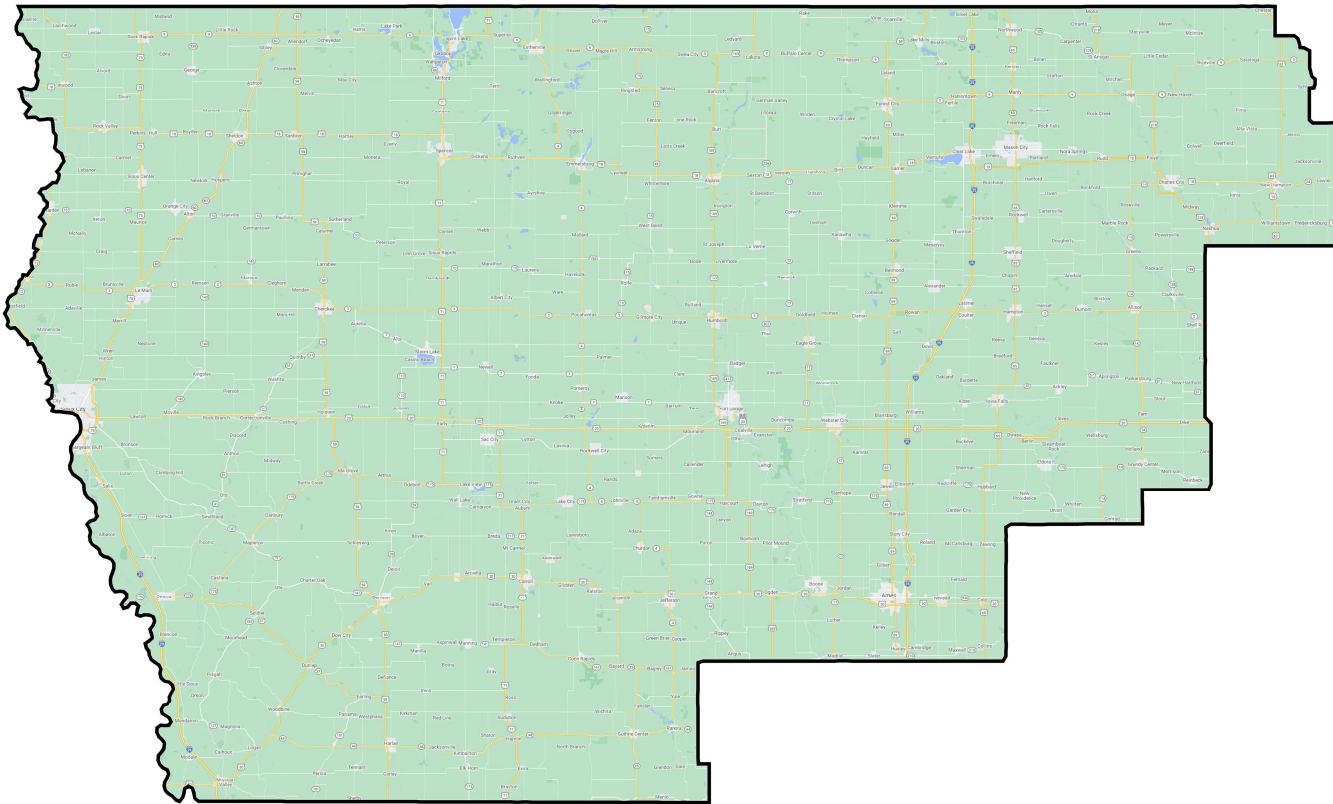
Field	Value
District	2
Population	797,592
Deviation	0
% Deviation	0%
% NH CVAP 19	96.2%
% NH White CVAP 19	90.3%
% NH Black CVAP 19	3.5%
% NH Asian CVAP 19	1.5%
% H CVAP 19	3.8%
% D 20_Pres	47.6%
% R 20_Pres	52.4%
ernate Schwartzberg	1.73
Polsby Popper	0.33
NH_Wht	660999
% NH_Wht	82.87%
AP_Blk	47803
% AP_Blk	5.99%
AP_Ind	13866
% AP_Ind	1.74%
AP_Asn	23324
% AP_Asn	2.92%
AP_Hwn	1651
% AP_Hwn	0.21%
AP_Oth	39986
% AP_Oth	5.01%
Hispanic Origin	49117
% Hispanic Origin	6.16%
18+_Pop	616583
NH18+_Wht	526250
% NH18+_Wht	85.35%
18+_AP_Blk	28933
% 18+_AP_Blk	4.69%
18+_AP_Ind	9928
% 18+_AP_Ind	1.61%
18+_AP_Asn	17001

District: 3



Field	Value
District	3
Population	797,593
Deviation	1
% Deviation	0%
% NH CVAP 19	96.1%
% NH White CVAP 19	88.9%
% NH Black CVAP 19	4.1%
% NH Asian CVAP 19	2.3%
% H CVAP 19	3.9%
% D 20_Pres	50.8%
% R 20_Pres	49.2%
ernate Schwartzberg	1.57
Polsby Popper	0.4
NH_Wht	626792
% NH_Wht	78.59%
AP_BlK	51977
% AP_BlK	6.52%
AP_Ind	14222
% AP_Ind	1.78%
AP_Asn	37371
% AP_Asn	4.69%
AP_Hwn	1372
% AP_Hwn	0.17%
AP_Oth	54255
% AP_Oth	6.8%
Hispanic Origin	65478
% Hispanic Origin	8.21%
18+_Pop	601640
NH18+_Wht	492513
% NH18+_Wht	81.86%
18+_AP_BlK	31279
% 18+_AP_BlK	5.2%
18+_AP_Ind	9997
% 18+_AP_Ind	1.66%
18+_AP_Asn	25061

District: 4



Field	Value
District	4
Population	797,591
Deviation	-1
% Deviation	-0%
% NH CVAP 19	96.4%
% NH White CVAP 19	92.6%
% NH Black CVAP 19	1.6%
% NH Asian CVAP 19	1.3%
% H CVAP 19	3.6%
% D 20_Pres	36.2%
% R 20_Pres	63.8%
ernate Schwartzberg	1.47
Polsby Popper	0.46
NH_Wht	674749
% NH_Wht	84.6%
AP_Blk	22713
% AP_Blk	2.85%
AP_Ind	14059
% AP_Ind	1.76%
AP_Asn	19044
% AP_Asn	2.39%
AP_Hwn	3872
% AP_Hwn	0.49%
AP_Oth	52754
% AP_Oth	6.61%
Hispanic Origin	64558
% Hispanic Origin	8.09%
18+_Pop	615967
NH18+_Wht	536670
% NH18+_Wht	87.13%
18+_AP_Blk	13438
% 18+_AP_Blk	2.18%
18+_AP_Ind	9323
% 18+_AP_Ind	1.51%
18+_AP_Asn	14224