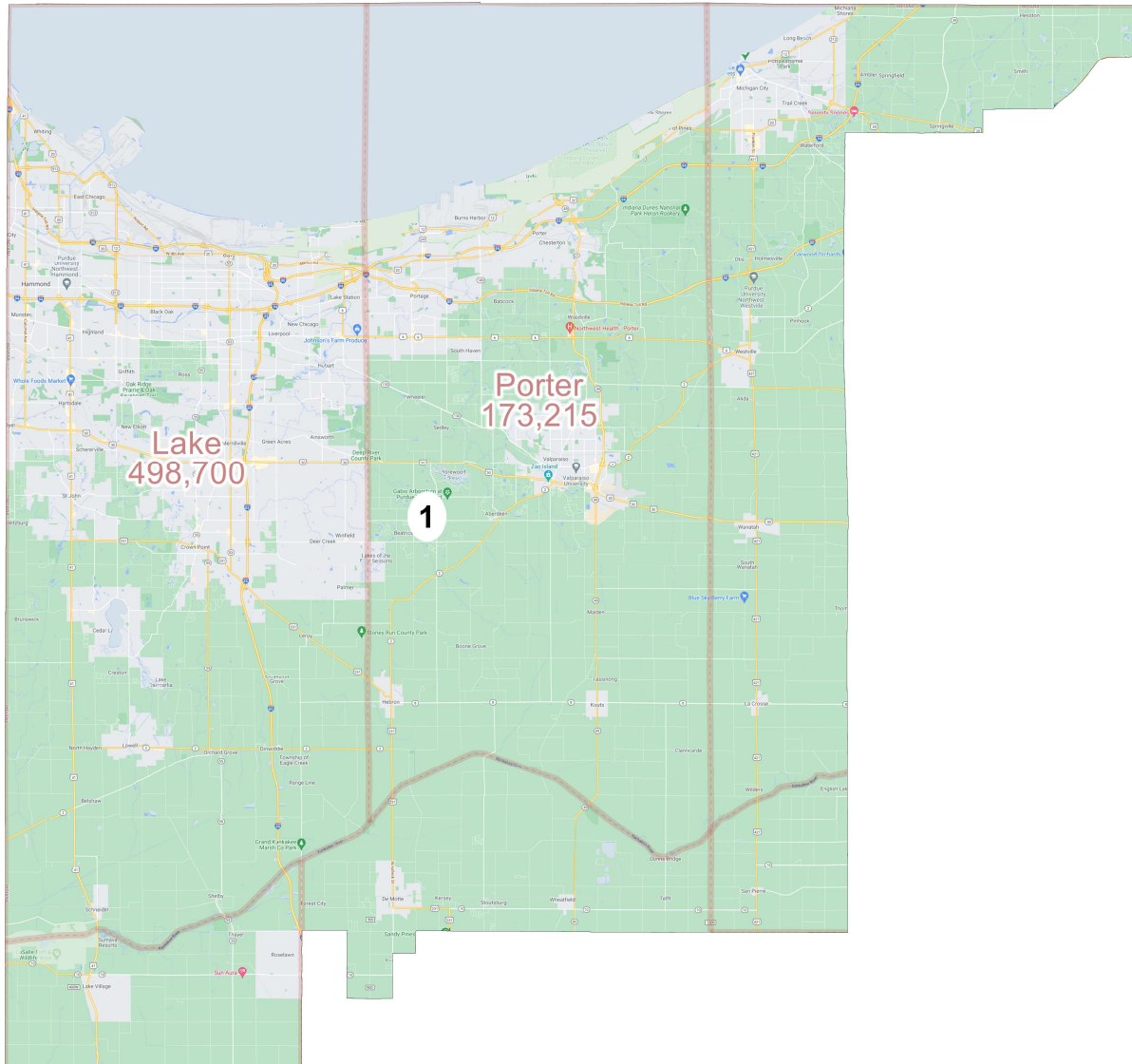
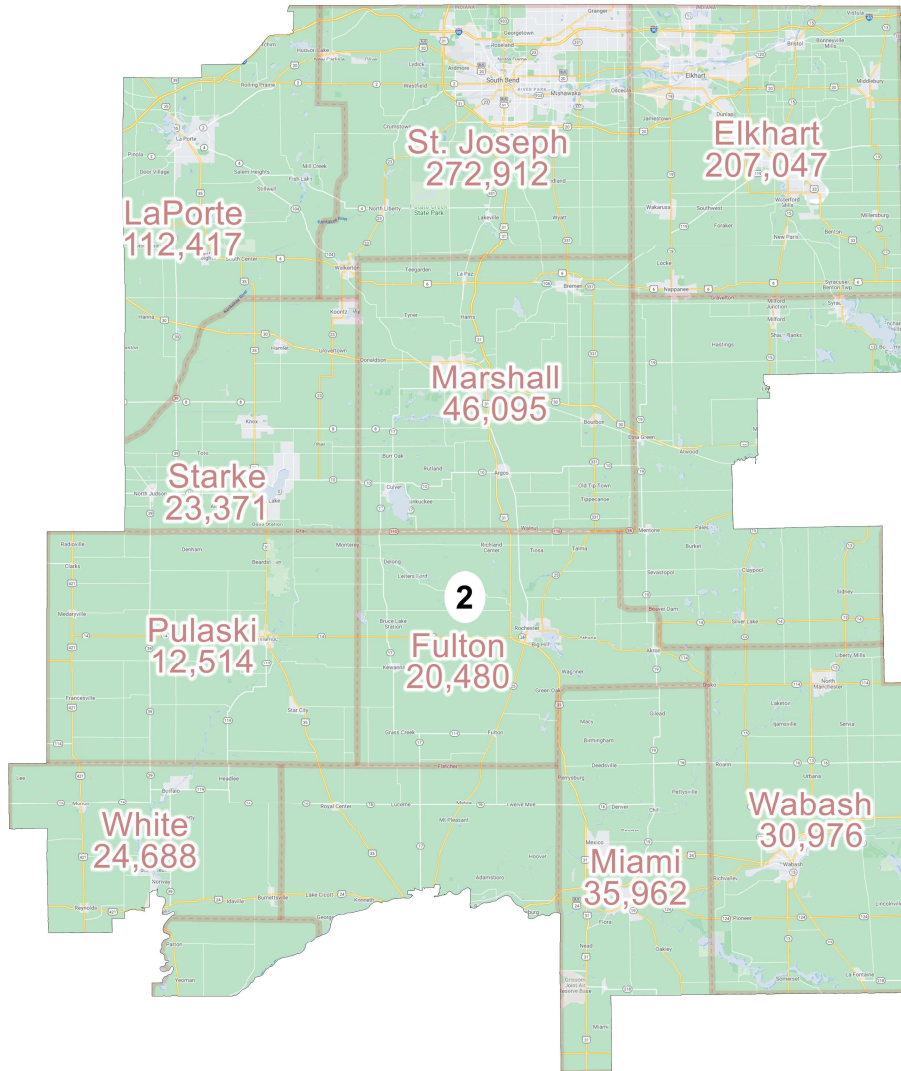


District: 1



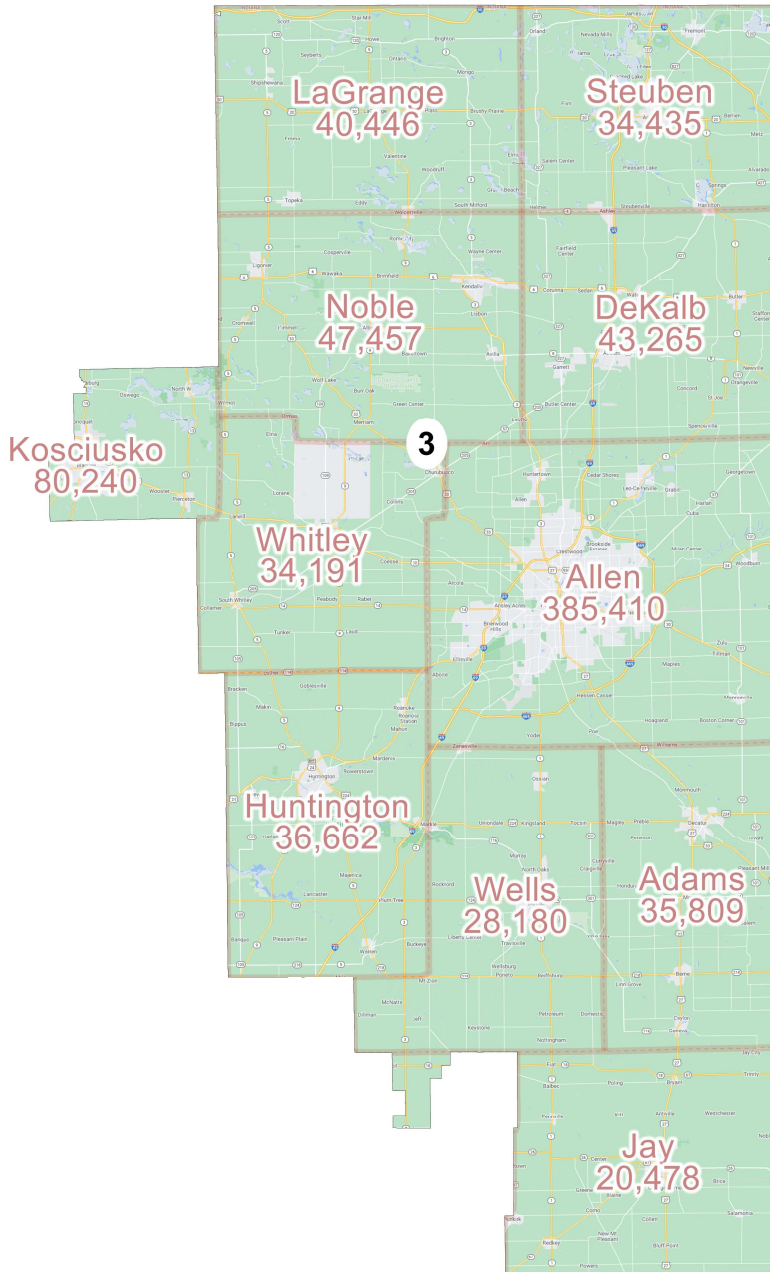
Field	Value
District	1
Population	753949
Deviation	1
% Deviation	0%
% D 20_Pres	53.5%
% R 20_Pres	46.5%
% NH CVAP 19	87.79%
% NH White CVAP 19	68.1%
% NH Black CVAP 19	17.74%
% NH Asian CVAP 19	1.19%
% H CVAP 19	12.23%
ernate Schwartzberg	1.38
Polsby Popper	0.52
Perimeter	198.02
Reock	0.45
NH_Wht	449310
% NH_Wht	59.59%
AP_Blk	155746
% AP_Blk	20.66%
AP_Ind	17091
% AP_Ind	2.27%
AP_Asn	14773
% AP_Asn	1.96%
AP_Hwn	814
% AP_Hwn	0.11%
AP_Oth	92572
% AP_Oth	12.28%
Hispanic Origin	124017
% Hispanic Origin	16.45%
18+_Pop	580653
NH18+_Wht	368113
% NH18+_Wht	63.4%
18+_AP_Blk	109275
% 18+_AP_Blk	18.82%
18+_AP_Ind	12337

District: 2



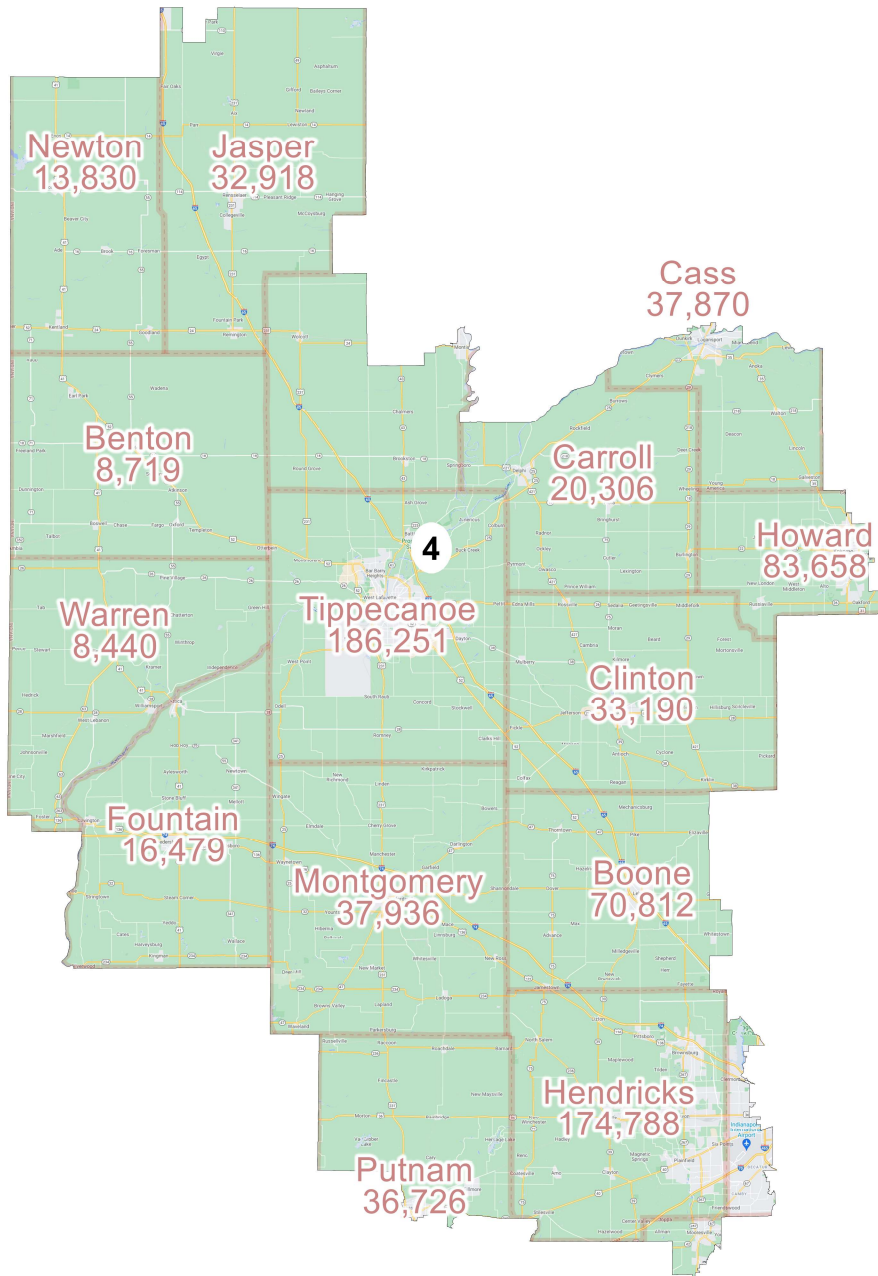
Field	Value
District	2
Population	753948
Deviation	0
% Deviation	0%
% D 20_Pres	39.01%
% R 20_Pres	60.99%
% NH CVAP 19	94.92%
% NH White CVAP 19	86.18%
% NH Black CVAP 19	6.72%
% NH Asian CVAP 19	1.05%
% H CVAP 19	5.09%
ernate Schwartzberg	1.55
Polsby Popper	0.42
Perimeter	366.96
Reock	0.59
NH_Wht	573933
% NH_Wht	76.12%
AP_Blk	64702
% AP_Blk	8.58%
AP_Ind	17263
% AP_Ind	2.29%
AP_Asn	14409
% AP_Asn	1.91%
AP_Hwn	978
% AP_Hwn	0.13%
AP_Oth	70107
% AP_Oth	9.3%
Hispanic Origin	84165
% Hispanic Origin	11.16%
18+_Pop	571453
NH18+_Wht	454494
% NH18+_Wht	79.53%
18+_AP_Blk	41177
% 18+_AP_Blk	7.21%
18+_AP_Ind	12352
% 18+_AP_Ind	2.16%
18+_AP_Asn	10333
% 18+_AP_Asn	1.81%
18+_AP_Hwn	625
% 18+_AP_Hwn	0.11%

District: 3



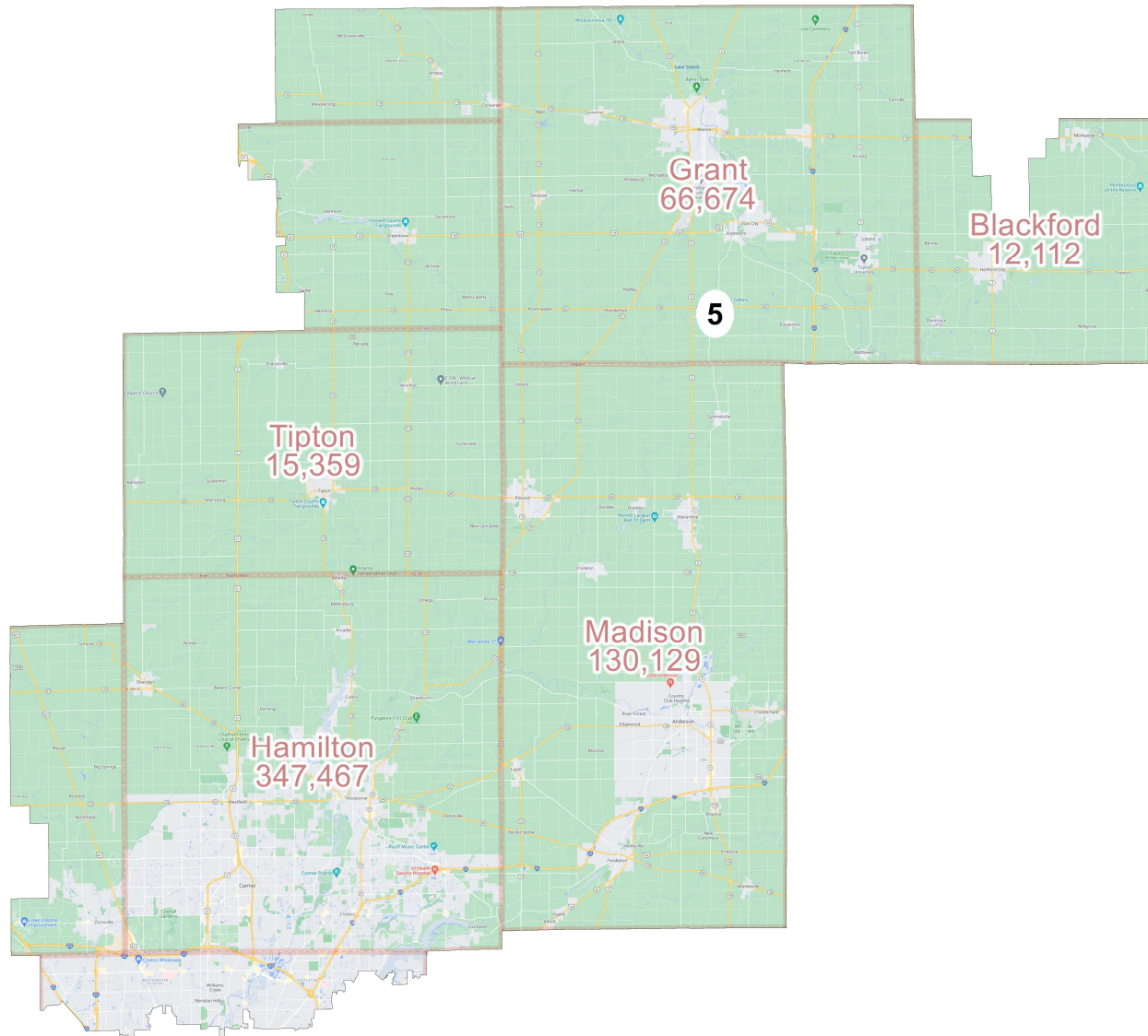
Field	Value
District	3
Population	753948
Deviation	0
% Deviation	0%
% D 20_Pres	34.85%
% R 20_Pres	65.15%
% NH CVAP 19	96.41%
% NH White CVAP 19	87.91%
% NH Black CVAP 19	6.23%
% NH Asian CVAP 19	1.4%
% H CVAP 19	3.59%
ernate Schwartzberg	1.47
Polsby Popper	0.46
Perimeter	335.91
Reock	0.44
NH_Wht	602289
% NH_Wht	79.88%
AP_BlK	58320
% AP_BlK	7.74%
AP_Ind	14525
% AP_Ind	1.93%
AP_Asn	25191
% AP_Asn	3.34%
AP_Hwn	925
% AP_Hwn	0.12%
AP_Oth	45023
% AP_Oth	5.97%
Hispanic Origin	53369
% Hispanic Origin	7.08%
18+_Pop	562923
NH18+_Wht	464618
% NH18+_Wht	82.54%
18+_AP_BlK	37416
% 18+_AP_BlK	6.65%
18+_AP_Ind	10365
% 18+_AP_Ind	1.84%
18+_AP_Asn	16345
% 18+_AP_Asn	2.9%
18+_AP_Hwn	621
% 18+_AP_Hwn	0.11%

District: 4



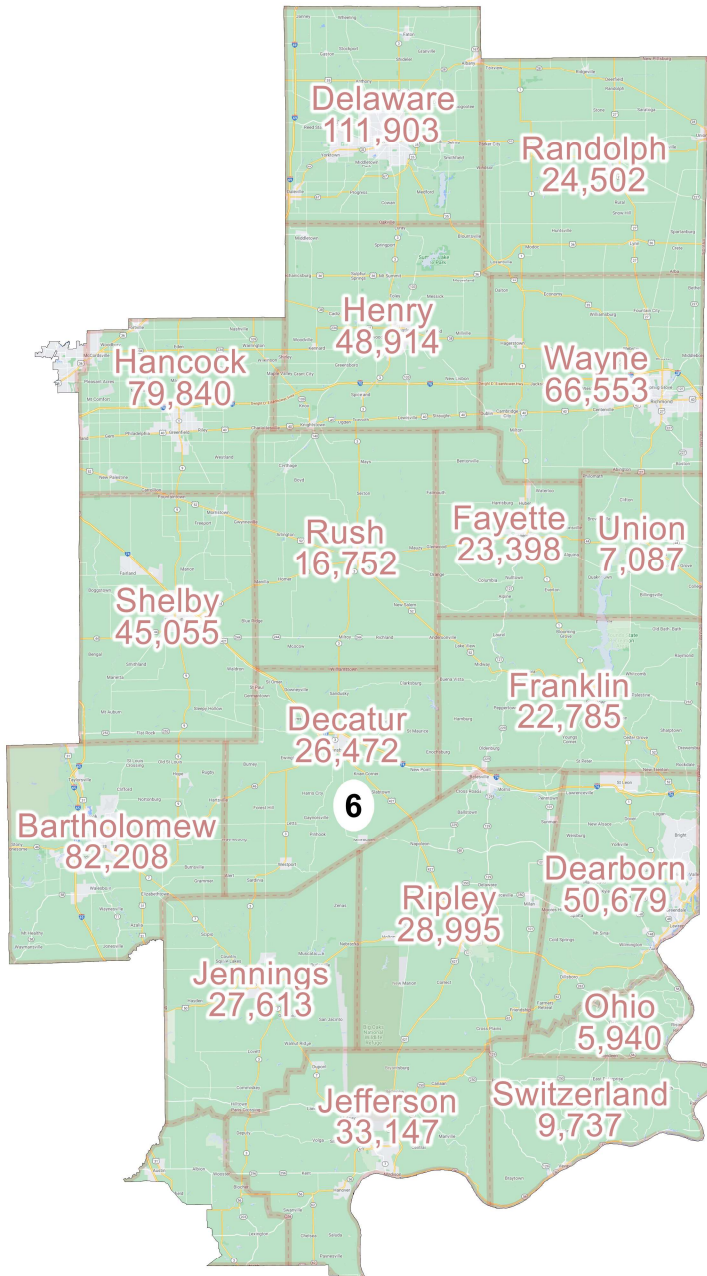
Field	Value
District	4
Population	753949
Deviation	1
% Deviation	0%
% D 20_Pres	37.1%
% R 20_Pres	62.9%
% NH CVAP 19	96.68%
% NH White CVAP 19	88.74%
% NH Black CVAP 19	5.37%
% NH Asian CVAP 19	1.79%
% H CVAP 19	3.33%
ernate Schwartzberg	1.8
Polsby Popper	0.31
Perimeter	466.41
Reock	0.46
NH_Wht	590228
% NH_Wht	78.28%
AP_BlK	57678
% AP_BlK	7.65%
AP_Ind	15375
% AP_Ind	2.04%
AP_Asn	30915
% AP_Asn	4.1%
AP_Hwn	3792
% AP_Hwn	0.5%
AP_Oth	50636
% AP_Oth	6.72%
Hispanic Origin	58106
% Hispanic Origin	7.71%
18+_Pop	577758
NH18+_Wht	466984
% NH18+_Wht	80.83%
18+_AP_BlK	35861
% 18+_AP_BlK	6.21%
18+_AP_Ind	11282
% 18+_AP_Ind	1.95%
18+_AP_Asn	24644
% 18+_AP_Asn	4.27%
18+_AP_Hwn	3409
% 18+_AP_Hwn	0.59%

District: 5



Field	Value
District	5
Population	753948
Deviation	0
% Deviation	0%
% D 20_Pres	47.01%
% R 20_Pres	52.99%
% NH CVAP 19	97.16%
% NH White CVAP 19	85.4%
% NH Black CVAP 19	8.47%
% NH Asian CVAP 19	2.59%
% H CVAP 19	2.84%
ernate Schwartzberg	1.69
Polsby Popper	0.35
Perimeter	270.65
Reock	0.45
NH_Wht	582992
% NH_Wht	77.33%
AP_BlK	75151
% AP_BlK	9.97%
AP_Ind	13359
% AP_Ind	1.77%
AP_Asn	38333
% AP_Asn	5.08%
AP_Hwn	907
% AP_Hwn	0.12%
AP_Oth	39086
% AP_Oth	5.18%
Hispanic Origin	42424
% Hispanic Origin	5.63%
18+_Pop	572012
NH18+_Wht	455956
% NH18+_Wht	79.71%
18+_AP_BlK	51737
% 18+_AP_BlK	9.04%
18+_AP_Ind	9747

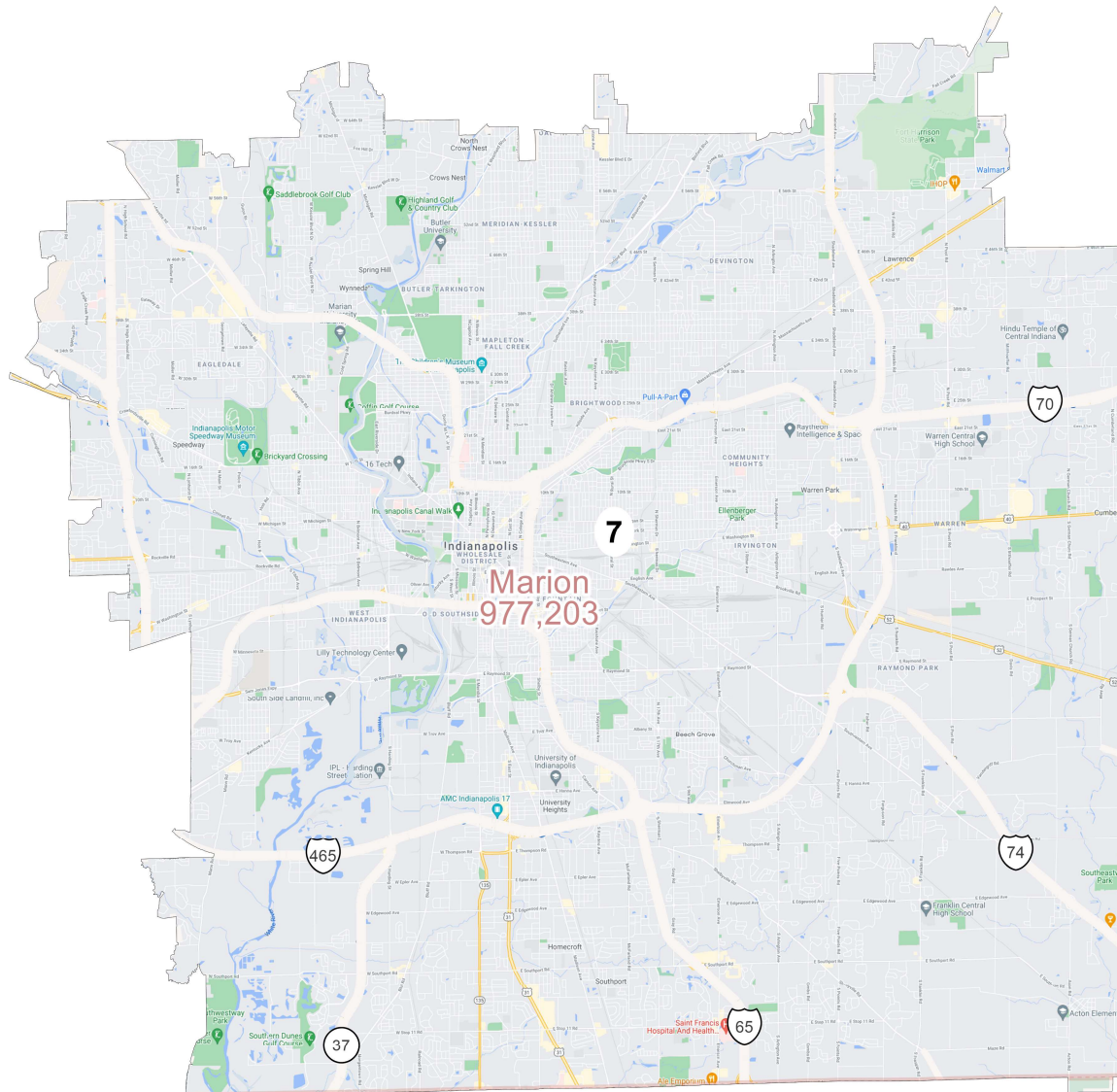
District: 6



©2021 CALIPER; ©2020 HERE

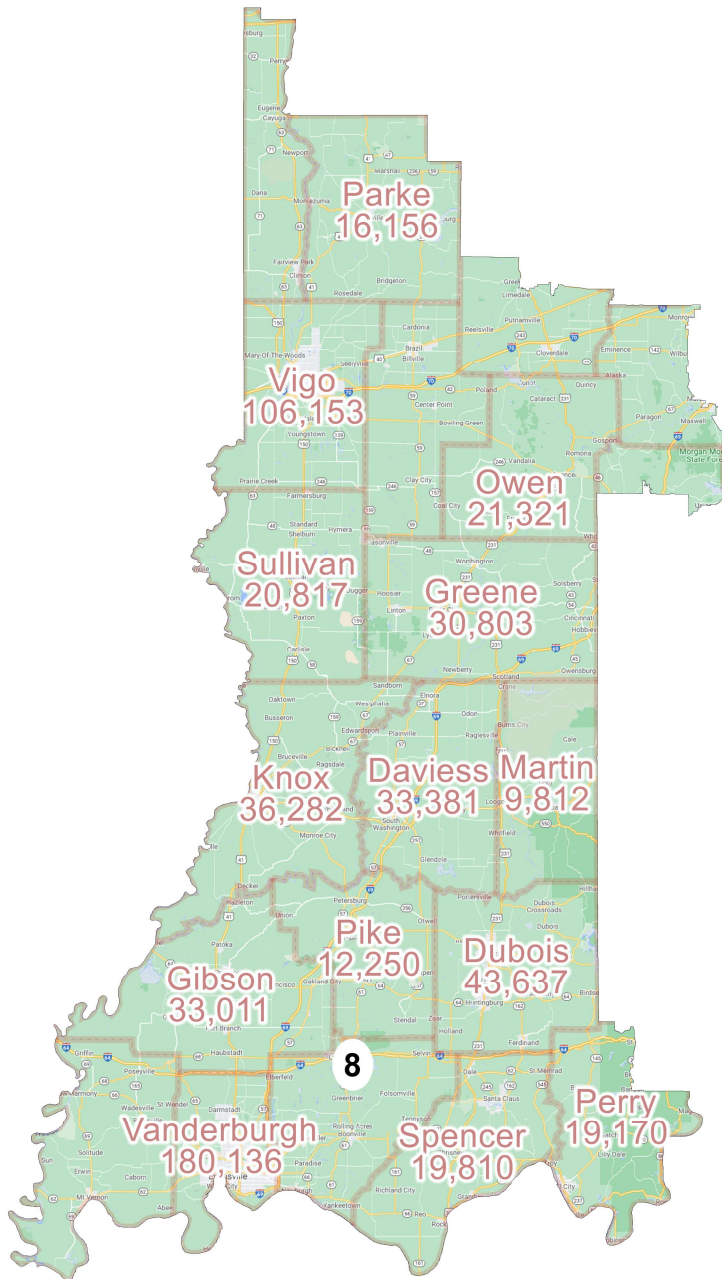
Field	Value
District	6
Population	753949
Deviation	1
% Deviation	0%
% D 20_Pres	31.31%
% R 20_Pres	68.69%
% NH CVAP 19	98.35%
% NH White CVAP 19	92.96%
% NH Black CVAP 19	3.88%
% NH Asian CVAP 19	0.8%
% H CVAP 19	1.65%
ernate Schwartzberg	1.52
Polsby Popper	0.43
Perimeter	426.64
Reock	0.49
NH_Wht	658936
% NH_Wht	87.4%
AP_BlK	36537
% AP_BlK	4.85%
AP_Ind	14706
% AP_Ind	1.95%
AP_Asn	14209
% AP_Asn	1.88%
AP_Hwn	957
% AP_Hwn	0.13%
AP_Oth	25354
% AP_Oth	3.36%
Hispanic Origin	27304
% Hispanic Origin	3.62%
18+_Pop	585879
NH18+_Wht	521688
% NH18+_Wht	89.04%
18+_AP_BlK	24263
% 18+_AP_BlK	4.14%
18+_AP_Ind	10986
% 18+_AP_Ind	1.88%
18+_AP_Asn	10008
% 18+_AP_Asn	1.71%
18+_AP_Hwn	593
% 18+_AP_Hwn	0.1%

District: 7



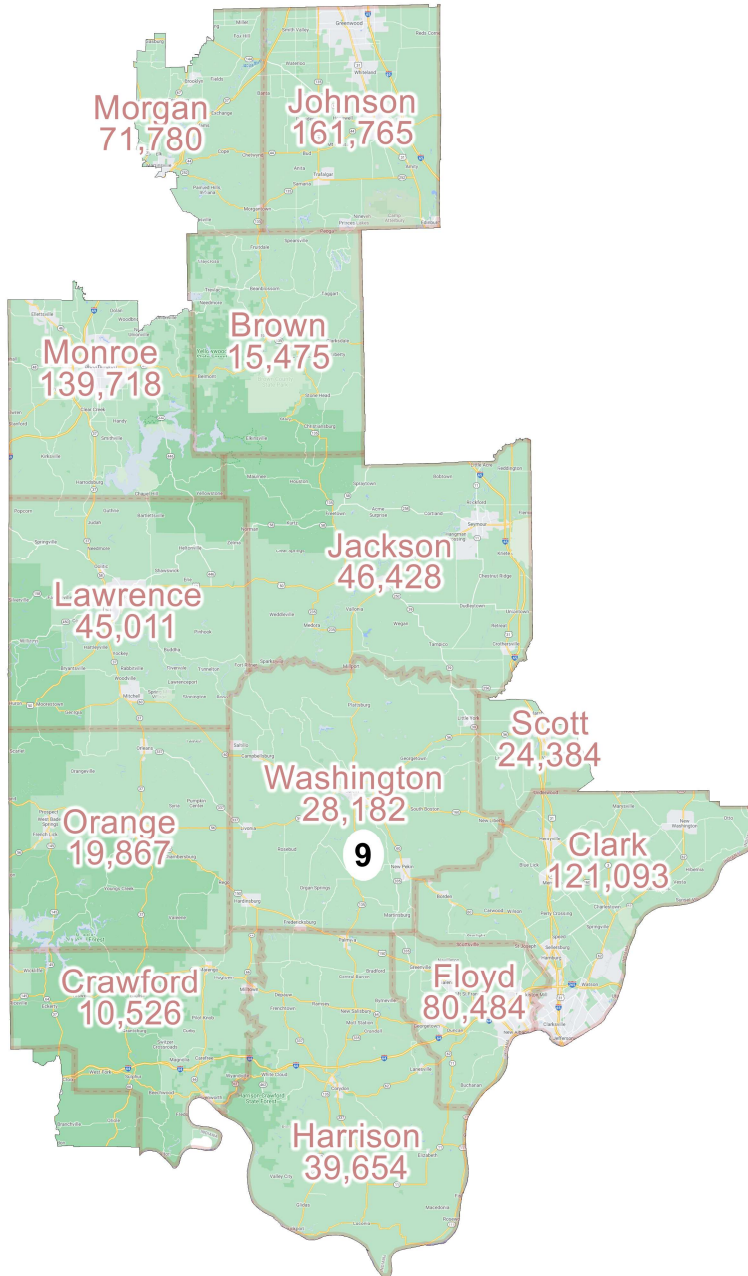
Field	Value
District	7
Population	753941
Deviation	-7
% Deviation	-0%
% D 20_Pres	65.56%
% R 20_Pres	34.44%
% NH CVAP 19	95.74%
% NH White CVAP 19	62.48%
% NH Black CVAP 19	30.25%
% NH Asian CVAP 19	1.92%
% H CVAP 19	4.26%
ernate Schwartzberg	1.66
Polsby Popper	0.36
Perimeter	97.65
Reock	0.64
NH_Wht	361190
% NH_Wht	47.91%
AP_BlK	235767
% AP_BlK	31.27%
AP_Ind	15967
% AP_Ind	2.12%
AP_Asn	39289
% AP_Asn	5.21%
AP_Hwn	1206
% AP_Hwn	0.16%
AP_Oth	93796
% AP_Oth	12.44%
Hispanic Origin	108071
% Hispanic Origin	14.33%
18+_Pop	568013
NH18+_Wht	300481
% NH18+_Wht	52.9%
18+_AP_BlK	165335
% 18+_AP_BlK	29.11%
18+_AP_Ind	11852

District: 8



Field	Value
District	8
Population	753948
Deviation	0
% Deviation	0%
% D 20_Pres	33.21%
% R 20_Pres	66.79%
% NH CVAP 19	98.71%
% NH White CVAP 19	92.67%
% NH Black CVAP 19	4.4%
% NH Asian CVAP 19	0.78%
% H CVAP 19	1.29%
ernate Schwartzberg	2.22
Polsby Popper	0.2
Perimeter	695.45
Reock	0.34
NH_Wht	660482
% NH_Wht	87.6%
AP_BlK	41126
% AP_BlK	5.45%
AP_Ind	14391
% AP_Ind	1.91%
AP_Asn	11036
% AP_Asn	1.46%
AP_Hwn	1415
% AP_Hwn	0.19%
AP_Oth	21981
% AP_Oth	2.92%
Hispanic Origin	23095
% Hispanic Origin	3.06%
18+_Pop	586004
NH18+_Wht	522067
% NH18+_Wht	89.09%
18+_AP_BlK	27769
% 18+_AP_BlK	4.74%
18+_AP_Ind	10829
% 18+_AP_Ind	1.85%
18+_AP_Asn	7825
% 18+_AP_Asn	1.34%
18+_AP_Hwn	867
% 18+_AP_Hwn	0.15%

District: 9



Field	Value
District	9
Population	753948
Deviation	0
% Deviation	0%
% D 20_Pres	38.12%
% R 20_Pres	61.88%
% NH CVAP 19	98.03%
% NH White CVAP 19	92.3%
% NH Black CVAP 19	3.3%
% NH Asian CVAP 19	1.63%
% H CVAP 19	1.96%
ernate Schwartzberg	1.83
Polsby Popper	0.3
Perimeter	433.44
Reock	0.42
NH_Wht	641644
% NH_Wht	85.1%
AP_BlK	34990
% AP_BlK	4.64%
AP_Ind	16766
% AP_Ind	2.22%
AP_Asn	24494
% AP_Asn	3.25%
AP_Hwn	1021
% AP_Hwn	0.14%
AP_Oth	30450
% AP_Oth	4.04%
Hispanic Origin	33640
% Hispanic Origin	4.46%
18+_Pop	587884
NH18+_Wht	511249
% NH18+_Wht	86.96%
18+_AP_BlK	22247
% 18+_AP_BlK	3.78%
18+_AP_Ind	12474
% 18+_AP_Ind	2.12%
18+_AP_Asn	18264
% 18+_AP_Asn	3.11%
18+_AP_Hwn	628
% 18+_AP_Hwn	0.11%