

# District: 01



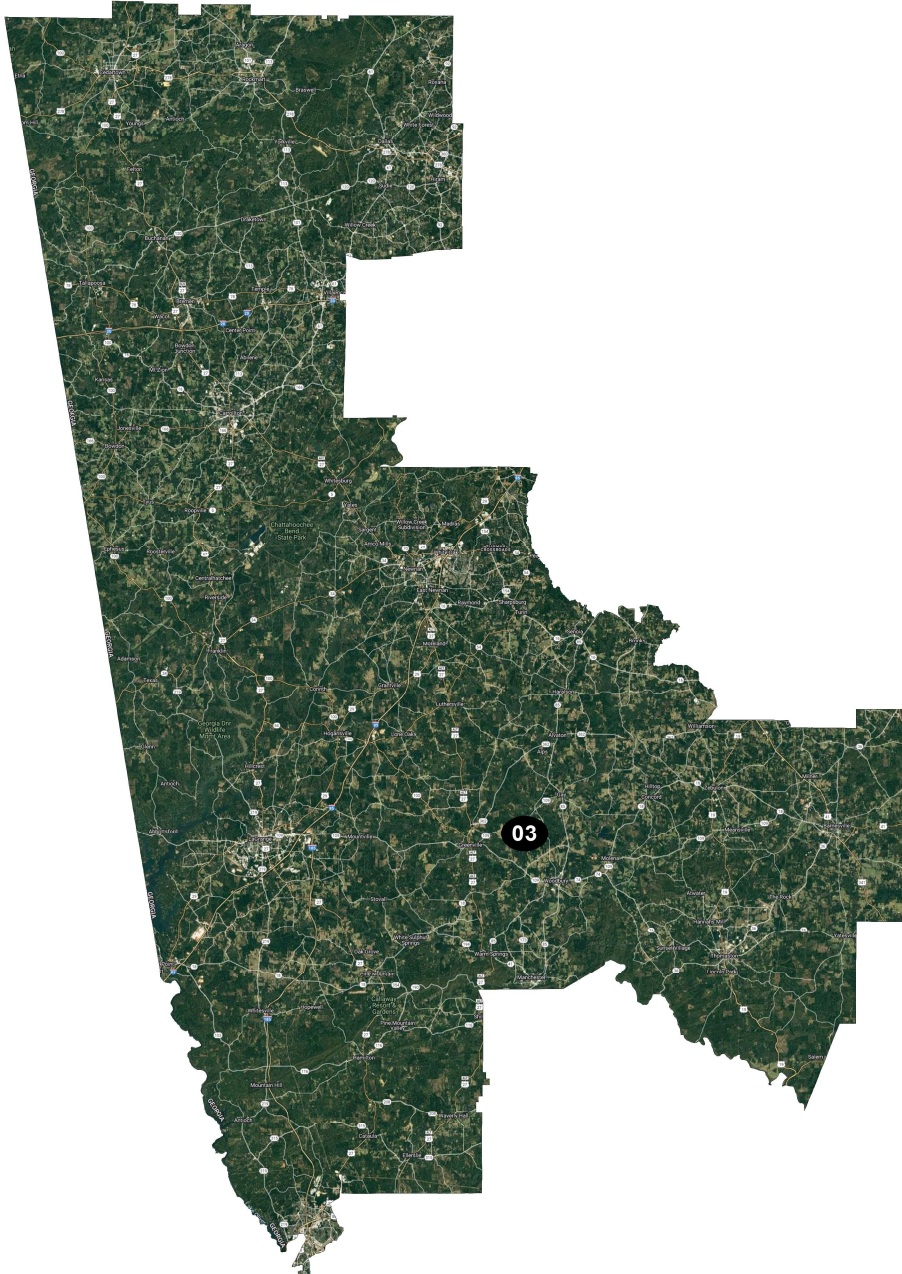
Field	Value
District	01
Population	765,137
Deviation	1
% Deviation	0.0%
20_Pres	333,732
% D 20_Pres	43.3%
% R 20_Pres	56.7%
Alternate Schwartzberg	2.10
Polsby Popper	0.23
Perimeter	706.43
Reock	0.38

# District: 02



Field	Value
District	02
Population	765,136
Deviation	0
% Deviation	0.0%
20_Pres	316,603
% D 20_Pres	54.9%
% R 20_Pres	45.1%
Alternate Schwartzberg	2.30
Polsby Popper	0.19
Perimeter	870.44
Reock	0.50

# District: 03



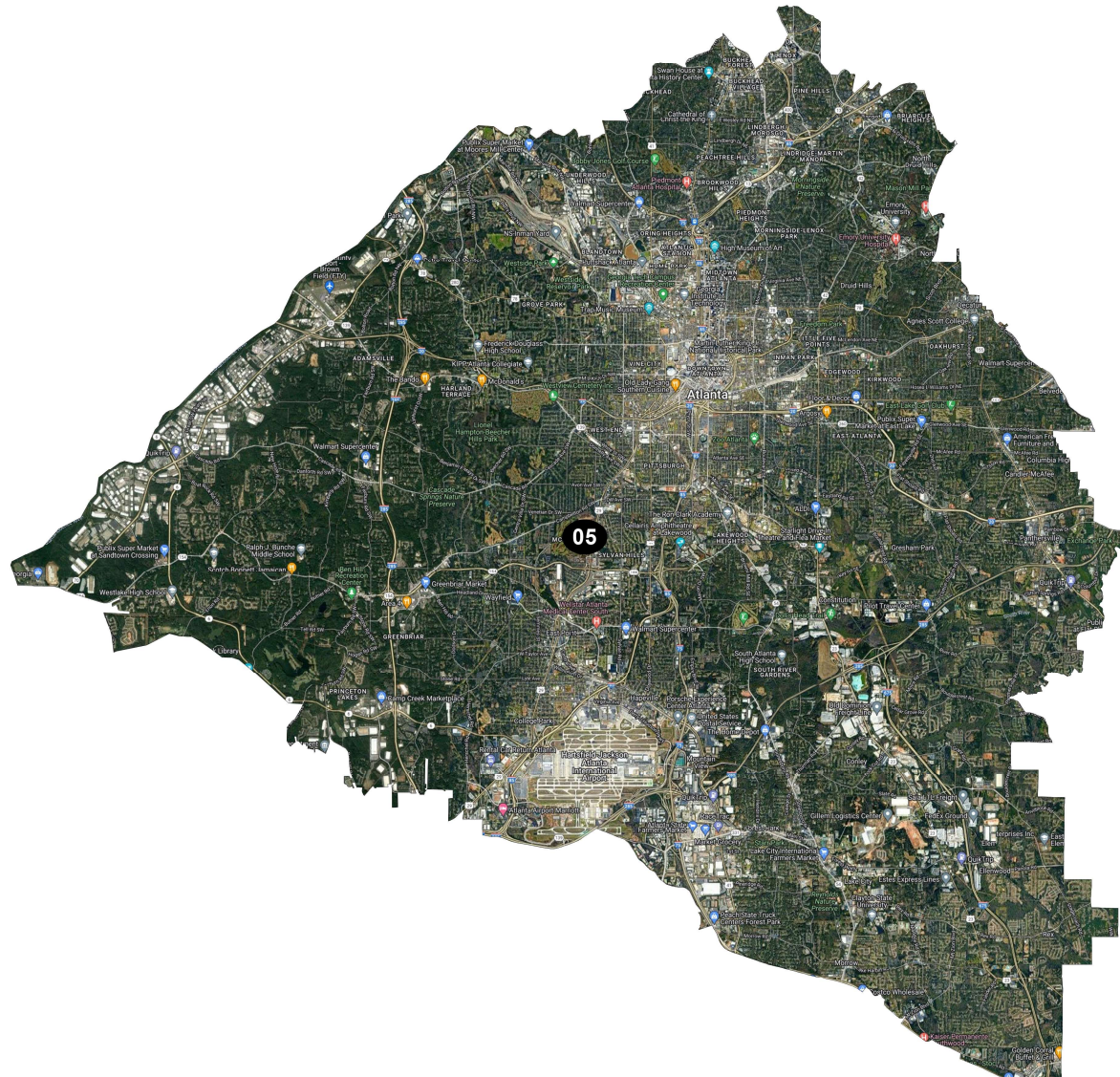
Field	Value
District	03
Population	765,136
Deviation	0
% Deviation	0.0%
20_Pres	370,992
% D 20_Pres	31.3%
% R 20_Pres	68.7%
Alternate Schwartzberg	1.95
Polsby Popper	0.26
Perimeter	459.33
Reock	0.40

# District: 04



Field	Value
District	04
Population	765,136
Deviation	0
% Deviation	0.0%
20_Pres	349,109
% D 20_Pres	80.1%
% R 20_Pres	19.9%
Alternate Schwartzberg	2.00
Polsby Popper	0.25
Perimeter	153.16
Reock	0.50

# District: 05



Field	Value
District	05
Population	765,136
Deviation	0
% Deviation	0.0%
20_Pres	352,734
% D 20_Pres	87.3%
% R 20_Pres	12.7%
Alternate Schwartzberg	1.71
Polsby Popper	0.34
Perimeter	98.20
Reock	0.52

# District: 06



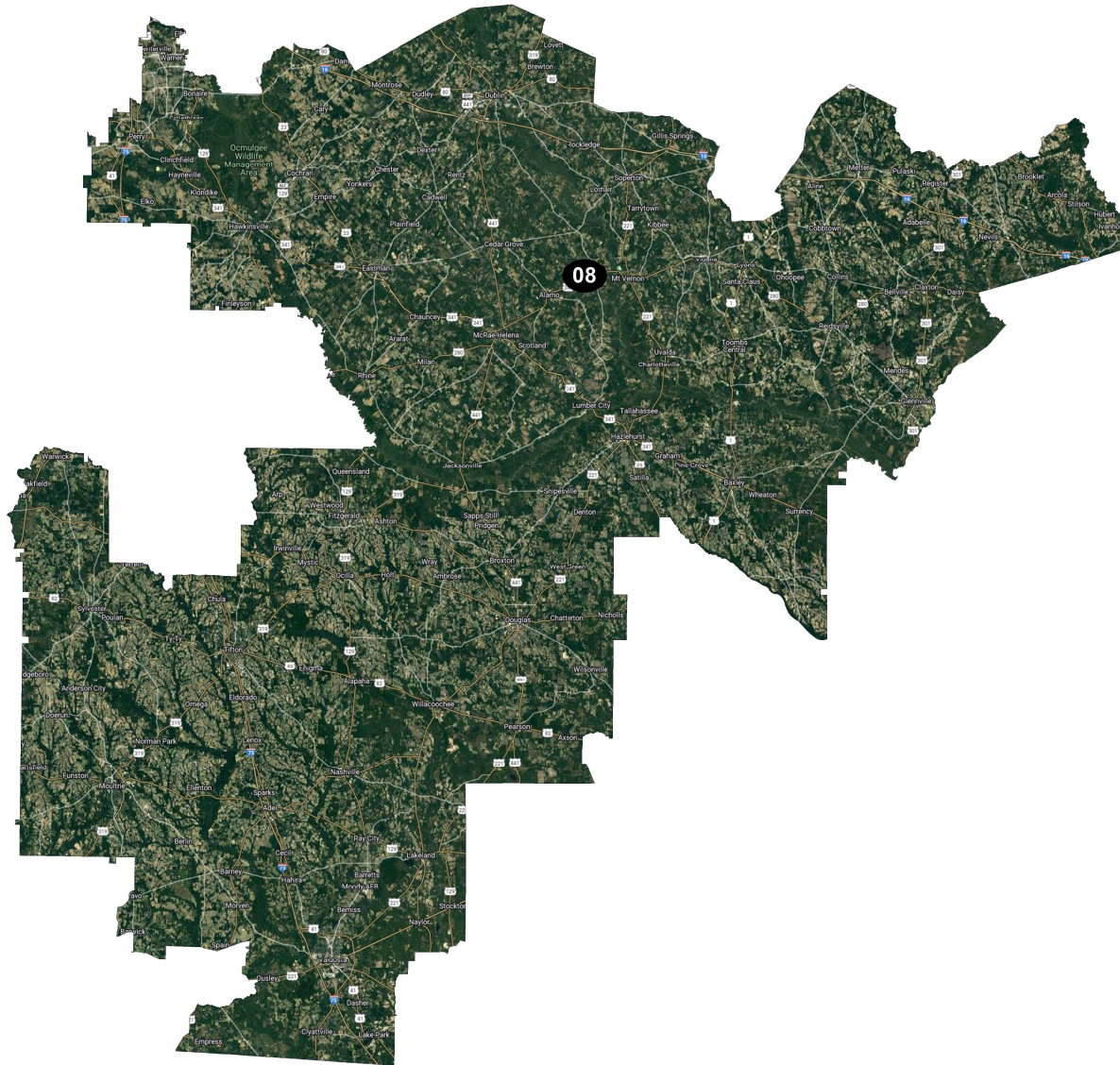
Field	Value
District	06
Population	765,136
Deviation	0
% Deviation	0.0%
20_Pres	394,574
% D 20_Pres	55.8%
% R 20_Pres	44.2%
Alternate Schwartzberg	1.91
Polsby Popper	0.27
Perimeter	117.86
Reock	0.49

# District: 07



Field	Value
District	07
Population	765,136
Deviation	0
% Deviation	0.0%
20_Pres	325,619
% D 20_Pres	56.3%
% R 20_Pres	43.7%
Alternate Schwartzberg	2.06
Polsby Popper	0.24
Perimeter	132.45
Reock	0.49

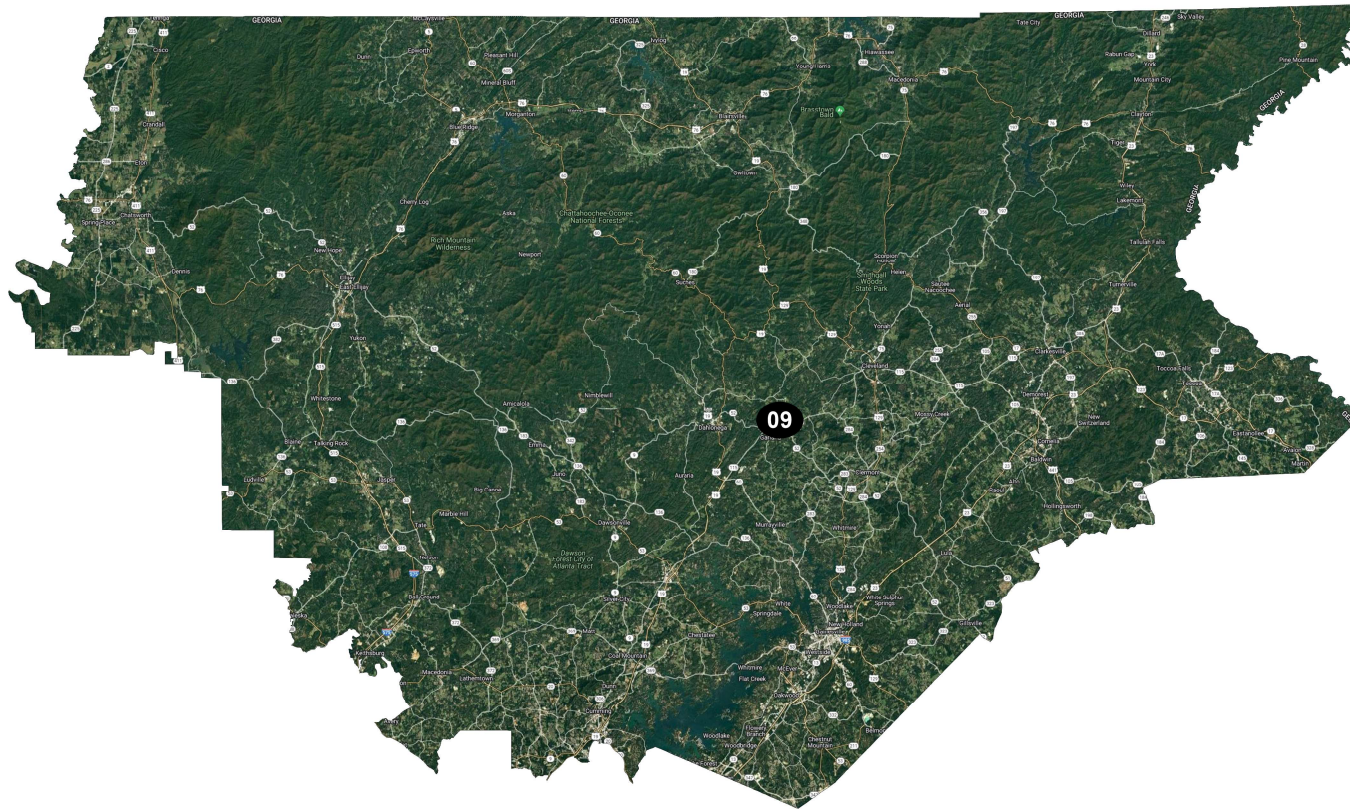
# District: 08



Field	Value
District	08
Population	765,136
Deviation	0
% Deviation	0.0%
20_Pres	316,271
% D 20_Pres	33.4%
% R 20_Pres	66.6%
Alternate Schwartzberg	2.47
Polsby Popper	0.16
Perimeter	904.46
Reock	0.43



# District: 09



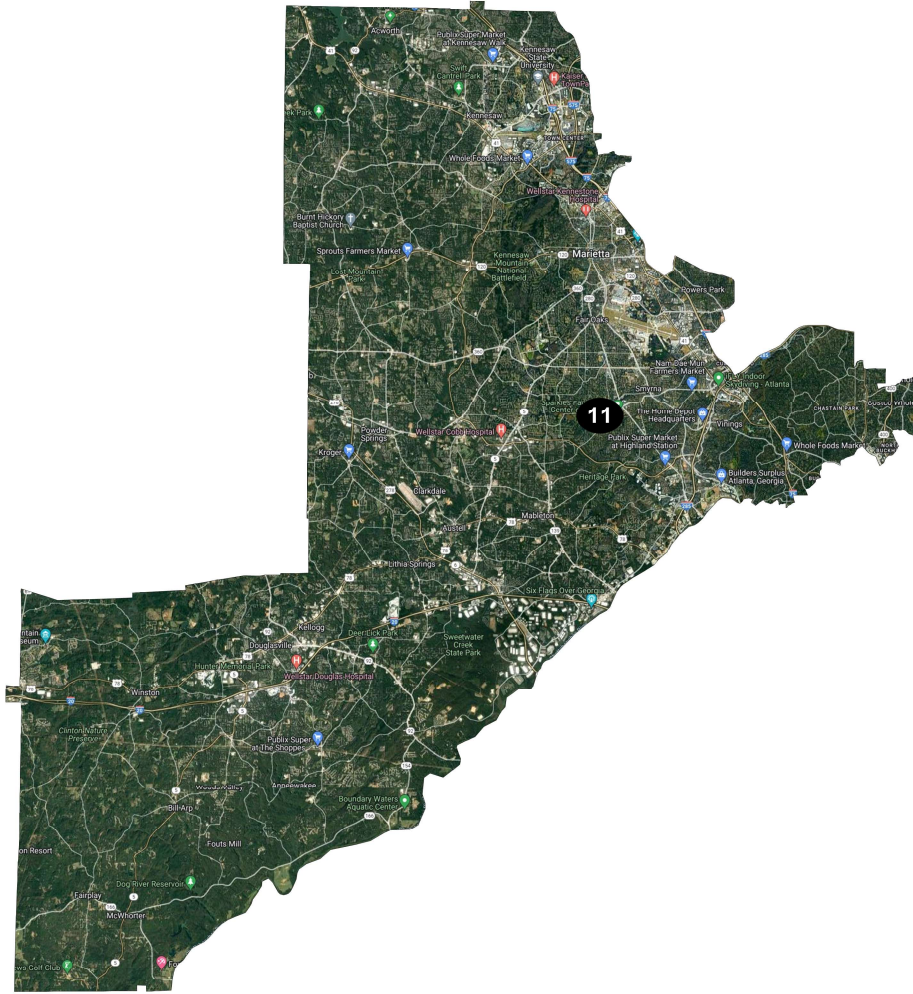
Field	Value
District	09
Population	765,137
Deviation	1
% Deviation	0.0%
20_Pres	379,893
% D 20_Pres	22.7%
% R 20_Pres	77.3%
Alternate Schwartzberg	1.79
Polsby Popper	0.31
Perimeter	422.19
Reock	0.49

# District: 10



Field	Value
District	10
Population	765,136
Deviation	0
% Deviation	0.0%
20_Pres	370,921
% D 20_Pres	35.2%
% R 20_Pres	64.8%
Alternate Schwartzberg	1.82
Polsby Popper	0.30
Perimeter	438.75
Reock	0.46

# District: 11



Field	Value
District	11
Population	765,136
Deviation	0
% Deviation	0.0%
20_Pres	371,103
% D 20_Pres	60.3%
% R 20_Pres	39.7%
Alternate Schwartzberg	1.75
Polsby Popper	0.33
Perimeter	137.12
Reock	0.38

# District: 12



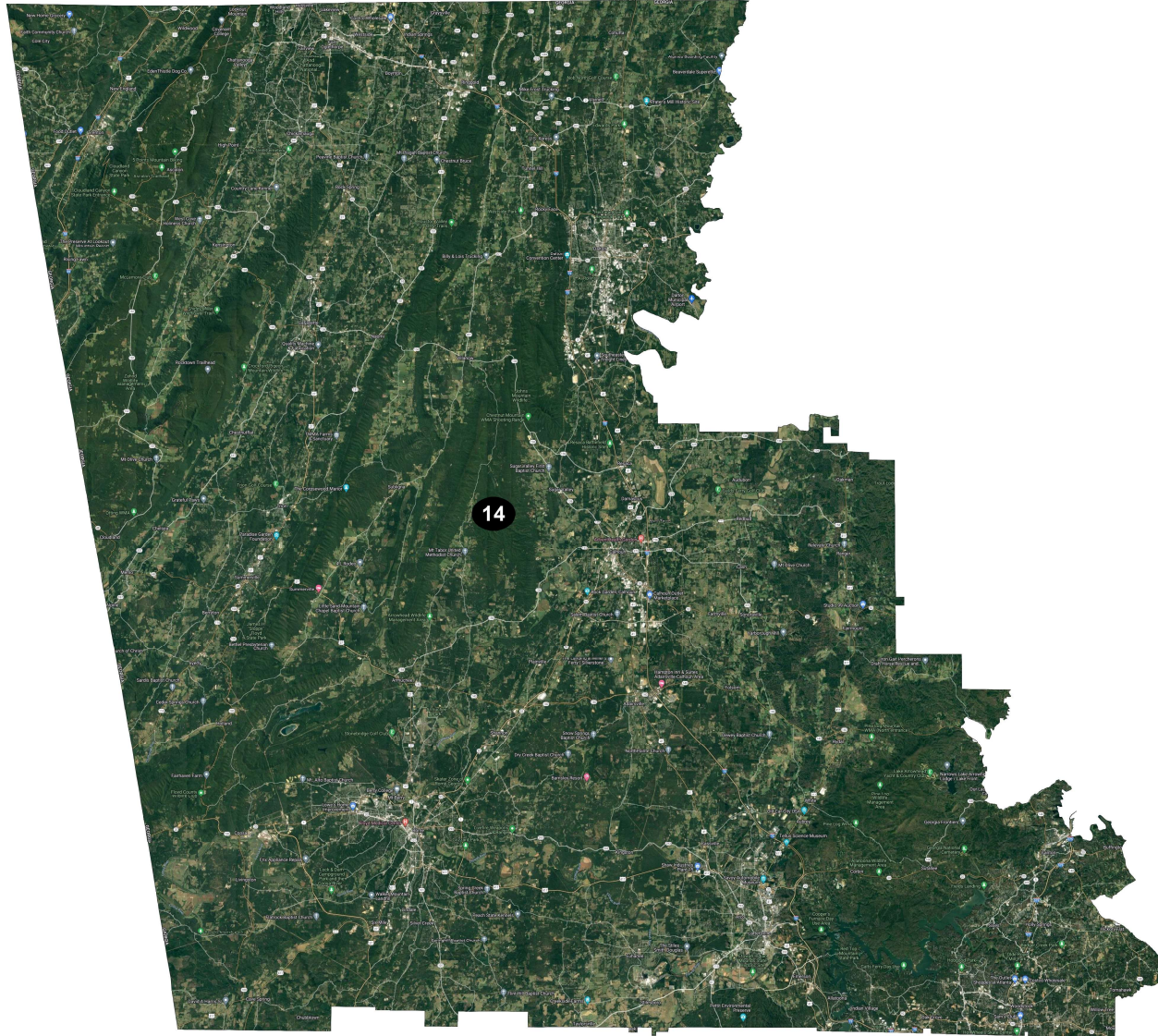
Field	Value
District	12
Population	765,137
Deviation	1
% Deviation	0.0%
20_Pres	350,189
% D 20_Pres	47.4%
% R 20_Pres	52.6%
Alternate Schwartzberg	2.11
Polsby Popper	0.22
Perimeter	714.25
Reock	0.40

# District: 13



Field	Value
District	13
Population	765,136
Deviation	0
% Deviation	0.0%
20_Pres	360,443
% D 20_Pres	67.9%
% R 20_Pres	32.1%
Alternate Schwartzberg	2.02
Polsby Popper	0.25
Perimeter	219.39
Reock	0.42

# District: 14



Field	Value
District	14
Population	765,137
Deviation	1
% Deviation	0.0%
20_Pres	344,161
% D 20_Pres	26.9%
% R 20_Pres	73.1%
Alternate Schwartzberg	1.69
Polsby Popper	0.35
Perimeter	327.67
Reock	0.45